



Neurocognitive Functioning After Carotid Endarterectomy and Carotid Stenting With Filter Protection or Flow Reversal

Maarten Plessers
Ghent University Hospital

Disclosure

Speaker name:

Maarten Plessers

I have the following potential conflicts of interest to report:

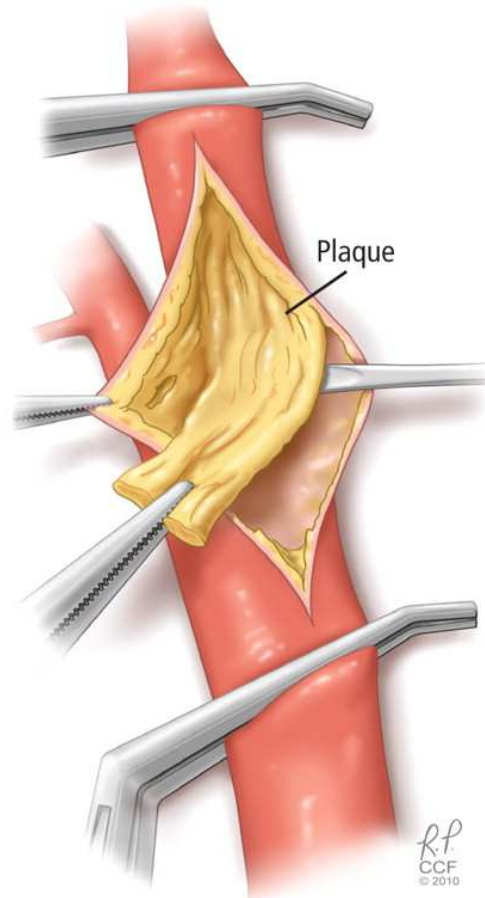
- Consulting
- Employment in industry
- Shareholder in a healthcare company
- Owner of a healthcare company
- Other(s)

- I do not have any potential conflict of interest

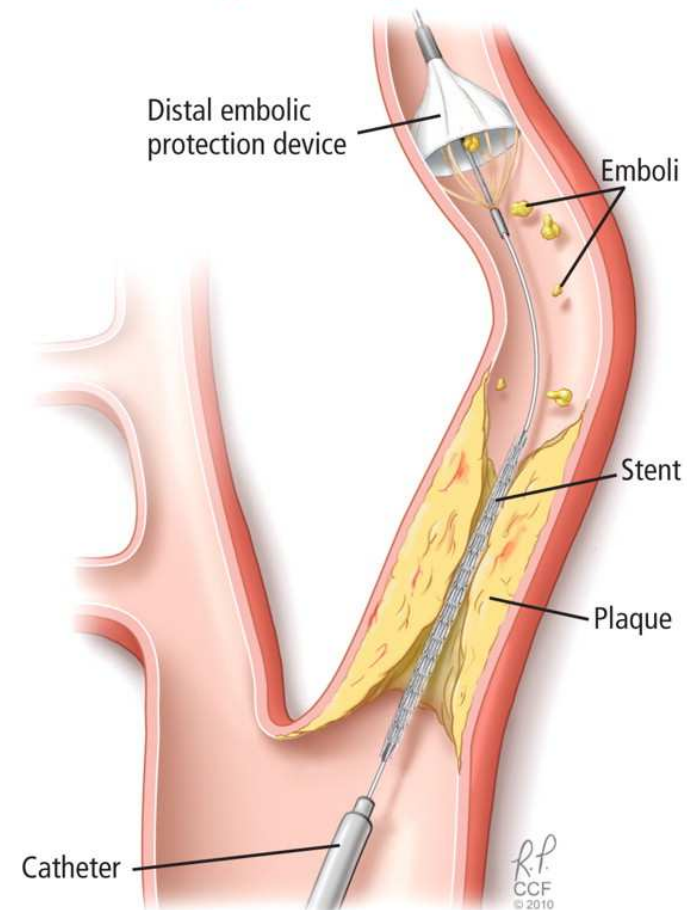
Cognitive effects?

■ Carotid stenting vs surgery

Carotid endarterectomy



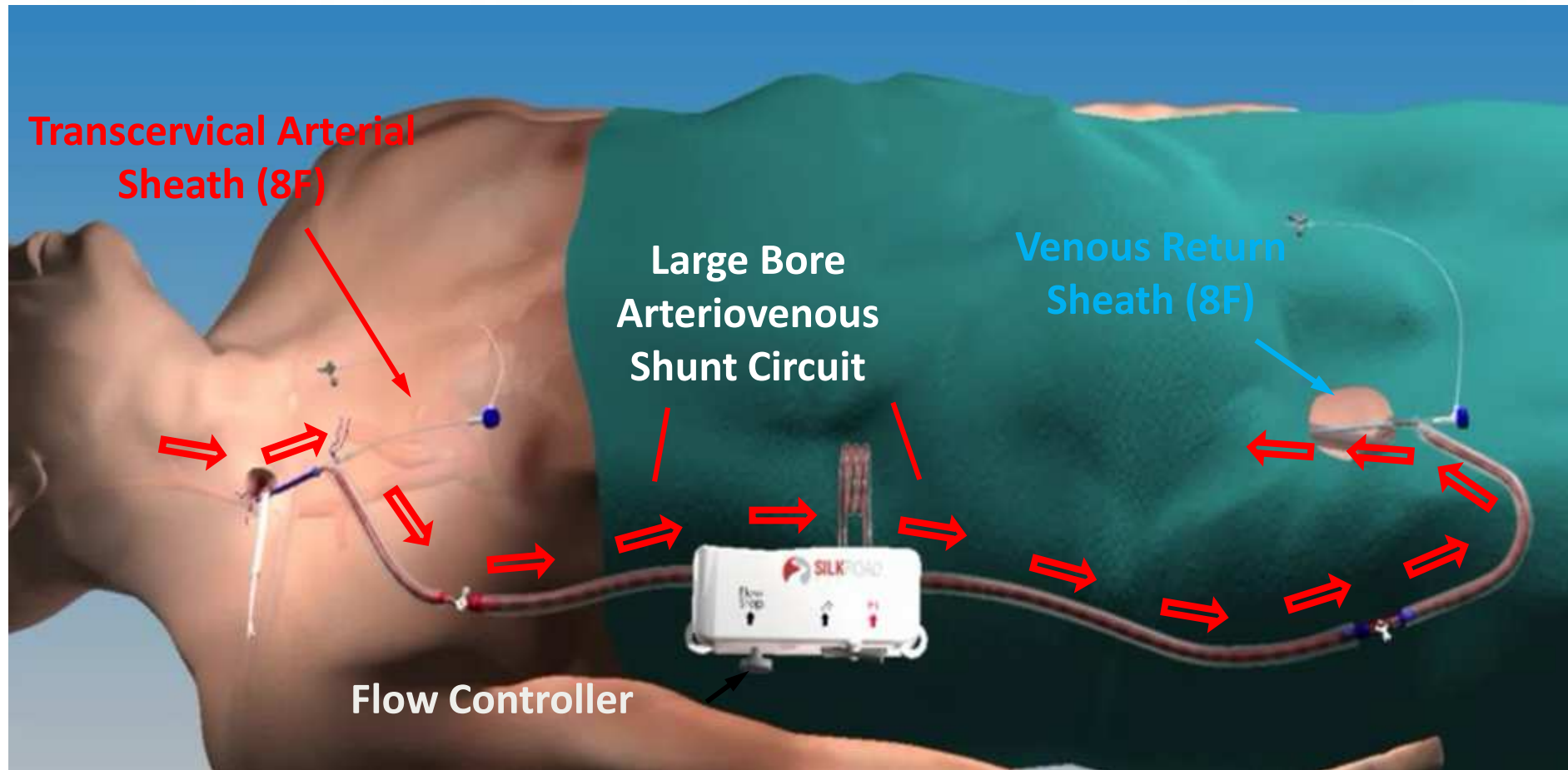
Carotid artery stenting



FAST-CAS

Flow Altered Short Transcervical CAS
With MICHI™ Neuroprotection System

MEET 2015
MULTIDISCIPLINARY EUROPEAN
ENDOVASCULAR THERAPY



Current Research

- Asymptomatic high grade carotid stenosis on BMT or symptomatic TIA
 - 26 CEA
 - 20 CAS
 - 10 Transfemoral distal protection
 - 10 Transcervical flow reversal
- 26 Matched controls, patients with PAD
 - carotid stenosis < 50%
 - matched for age, sex, SES
- *Exclusion criteria*
 - *Age > 80j*
 - *Ethyl*
 - *Symptomatic stroke*
 - *CEA / CAS < 2j*
 - *CABG < 1j*
 - *MMSE ≤ 24*

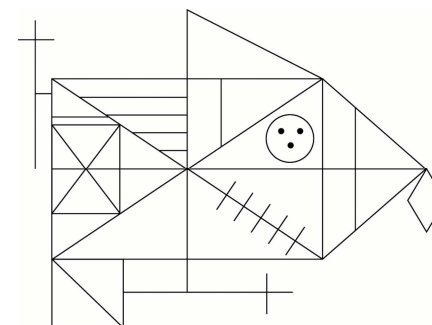
Research protocol

	Pre-operative	1 Month	6 Months	12 Months
Neurocognitive testing	✓	✓	✓	✓

- Mini Mental State Examination
- Adult Reading Test
- Complex Figure Test
- Audio Verbal Learning Test
- Trail Making Test
- Digit span (repeat numbers)
- Spatial span (Corsi block-tapping test)

- Stroop
- Line bisection
- Symbol Substitution Coding Task
- Grooved pegboard
- D-2 concentration endurance test
- Verbal fluency

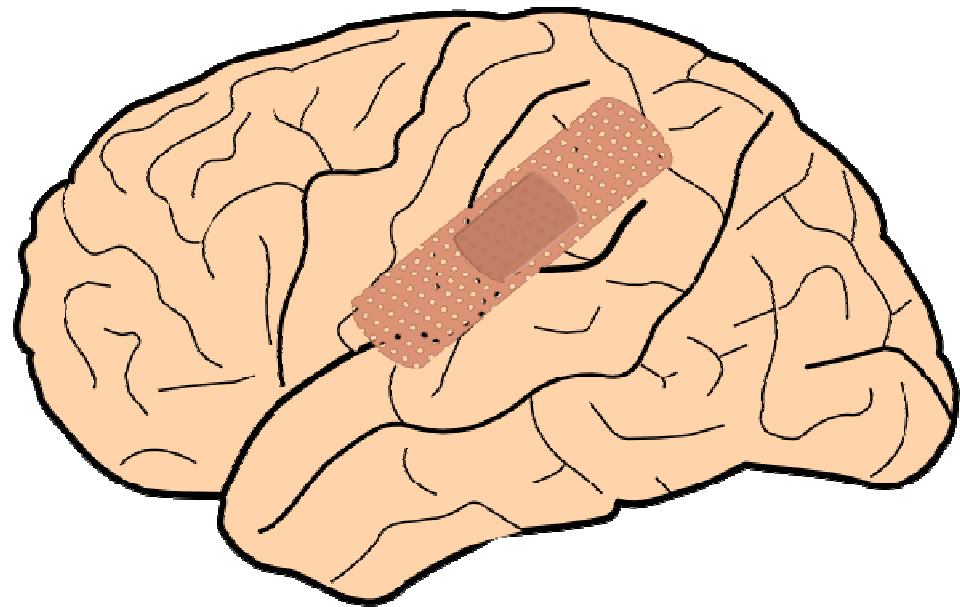
YELLOW BLUE ORANGE
 BLACK RED GREEN
 PURPLE YELLOW RED
 ORANGE GREEN BLACK
 BLUE RED PURPLE
 GREEN BLUE ORANGE



Preoperative Cognition

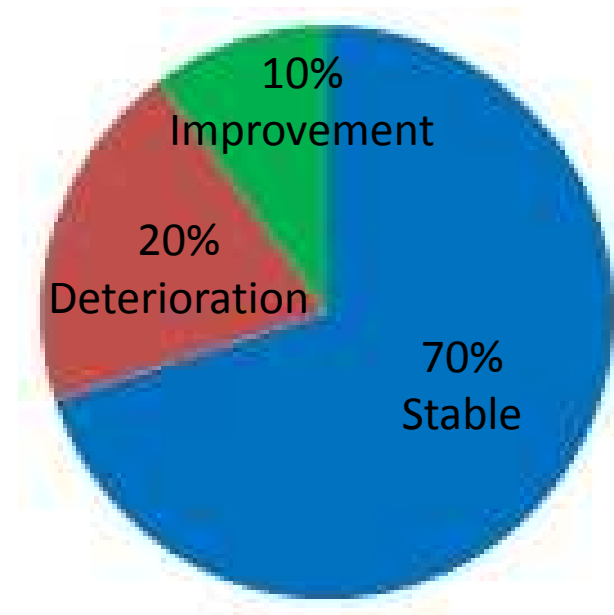
(compared with normative data)

- Cognitive impairment
 - 54 % of carotid patients
 - 46 % of vascular controls



Outcome after revascularization

- No group differences
- No interactions
- Large effects of timing for 13 out of 18 variables



Conclusions

- Similar cognitive effects for each intervention
 - Limitation: statistical power
- Large practice effects
- Control group is important

