



**MEET** 2015  
MULTIDISCIPLINARY EUROPEAN  
ENDOVASCULAR THERAPY

BUILDING  
ENDOVASCULAR  
SYNERGIES

 **FMRP**  
Flanders Medical Research Program

A.Z. Sint-Blasius, Dendermonde



Marc Bosiers  
Koen Deloose  
Joren Callaert

Imelda Hospital, Bonheiden



Patrick Peeters  
Jürgen Verbist

OLV Hospital, Aalst



Lieven Maene  
Roel Beelen  
Ivan Degrieck

R.Z. Heilig Hart, Tienen

**rz** **ti**enen Koen Keirse

# Are current stents ready for the “Surgical landing-zones”

L. Maene MD



## Disclosure

Speaker name: MAENE Lieven

I have the following potential conflicts of interest to report:

- Consulting
- Employment in industry
- Shareholder in a healthcare company
- Owner of a healthcare company
- Other(s)
  
- I do not have any potential conflict of interest

# Endovascular tre







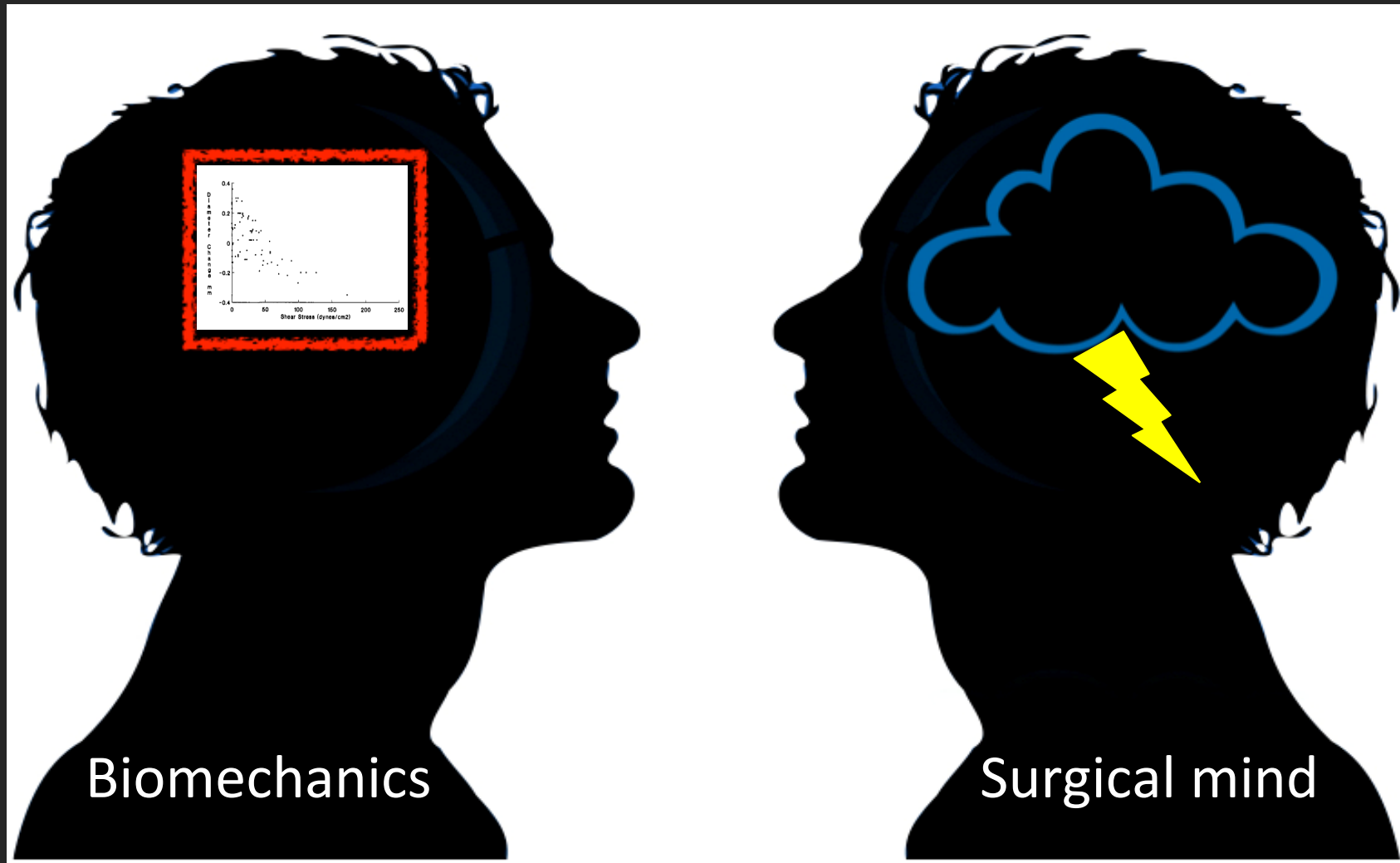
**EXERCISE BLOCK**

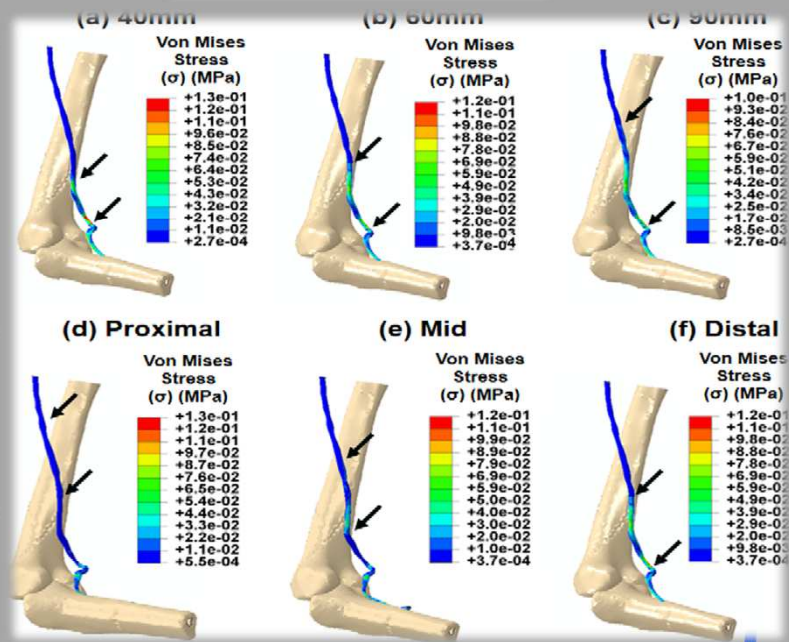
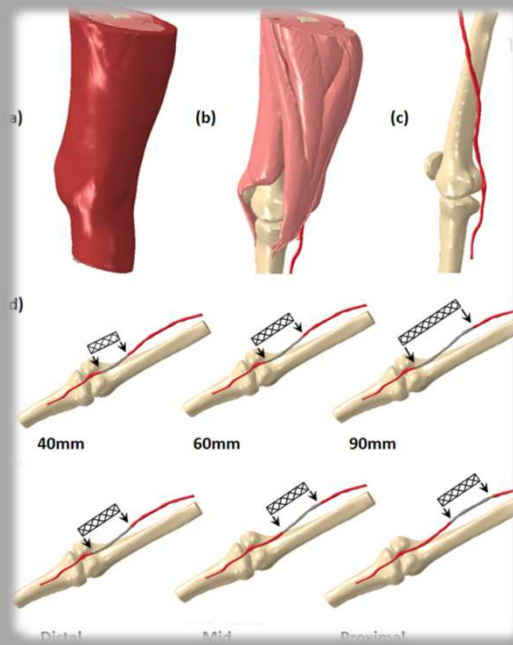
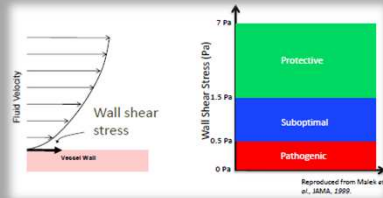
- 1- Place Block on the floor
  - 2- Walk around it twice
  - 3- Sit down! Relax
- You have just walked  
around the block twice!



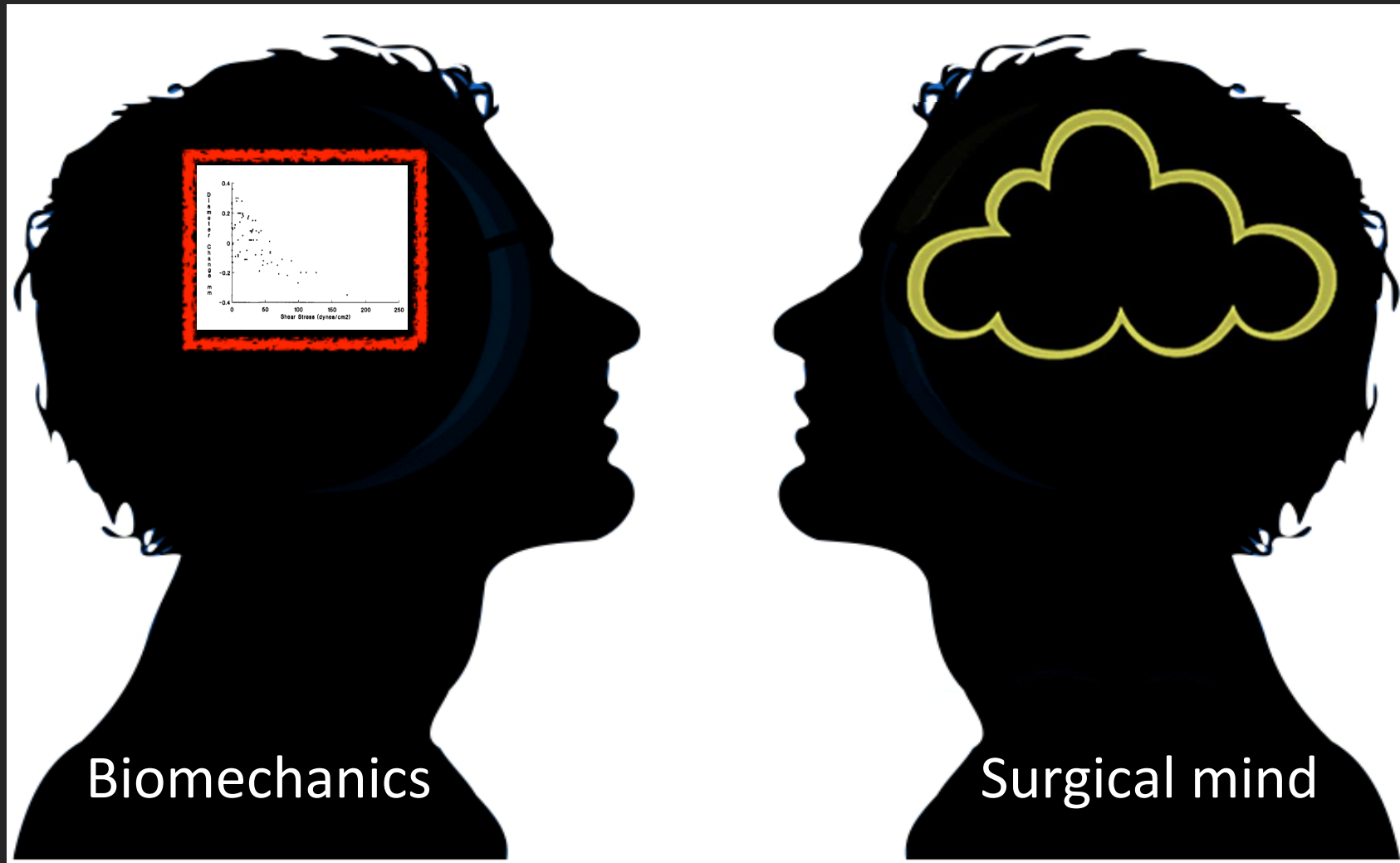
“Hundreds of years of medical progress, and all you can tell me to do is walk more ?!”

# Endovascular treatment today ...





# Endovascular treatment today ...



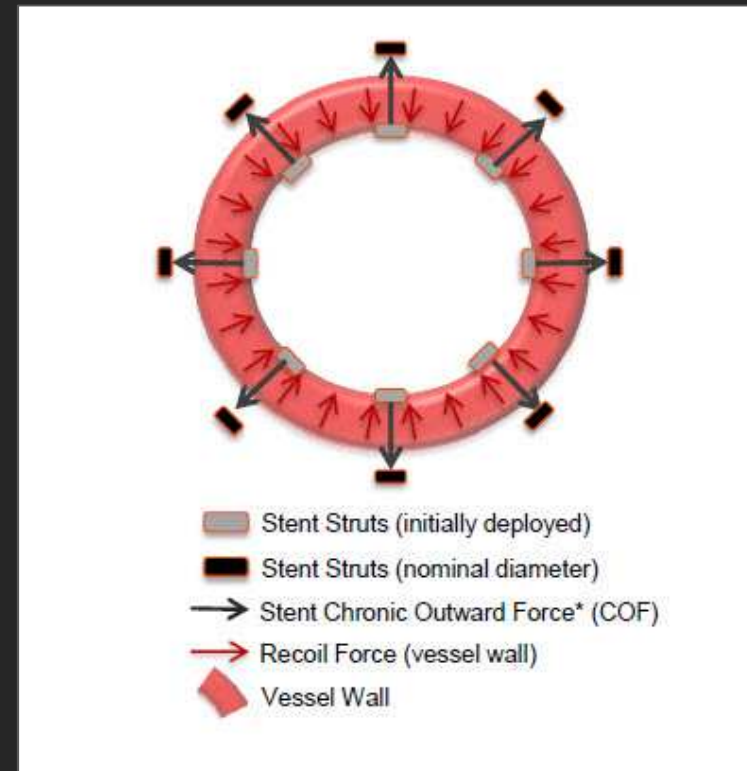
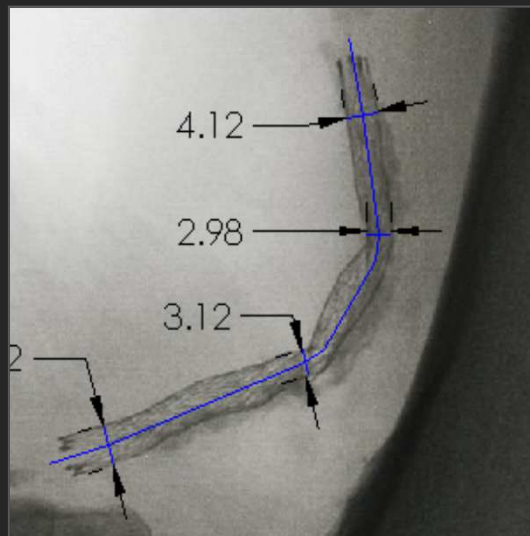
Biomechanics

Surgical mind



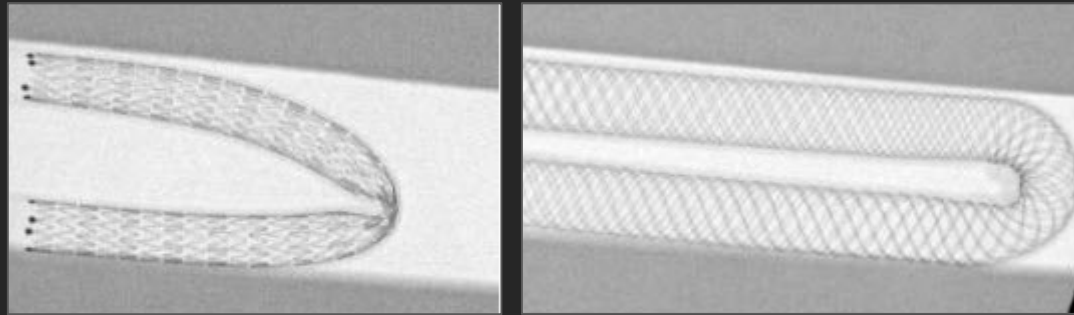
- ... Avoid chronic vesselwall irritation
- ... Avoid vesselwall recoil
- ... Avoid stentfractures

## 1. Appropriate stent-sizing

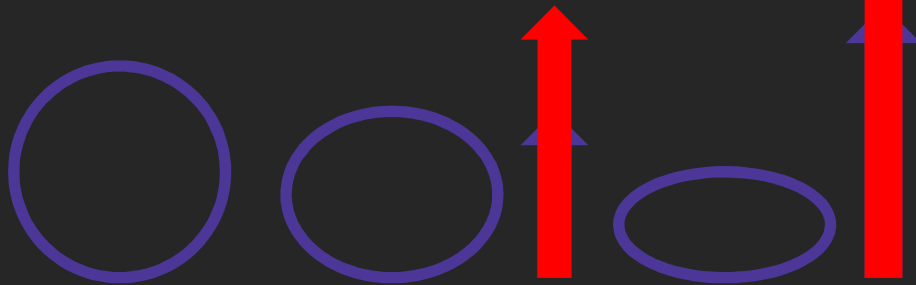


## 2. Consider stent-design

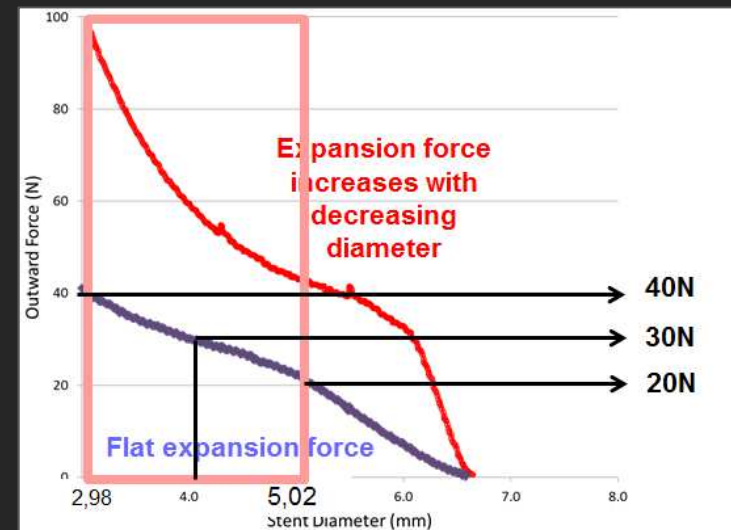
### 1. Flexibility



### 2. Expansion Force



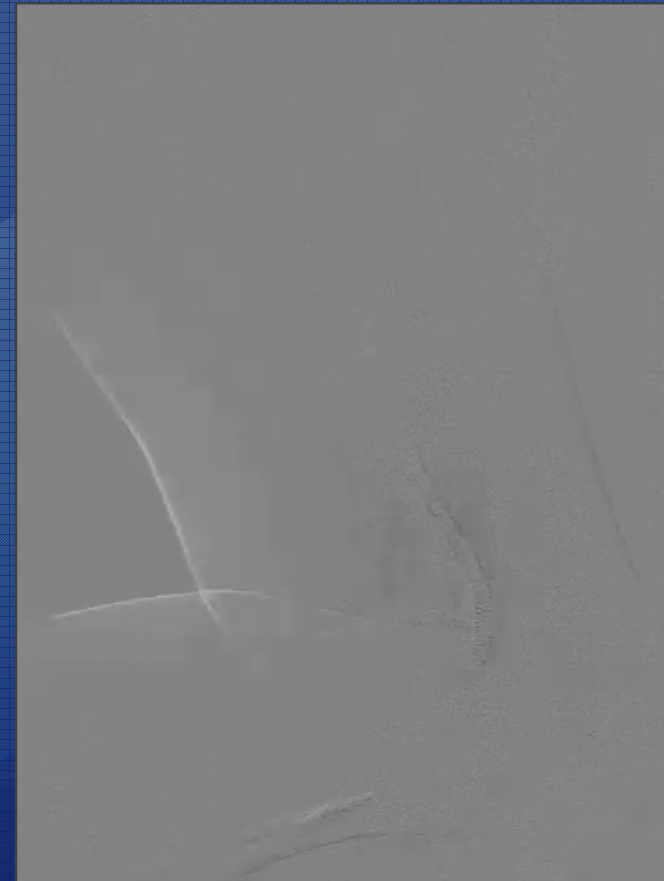
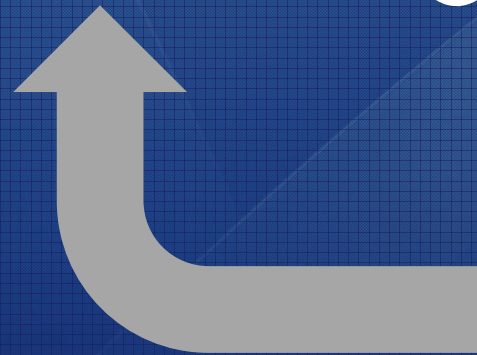
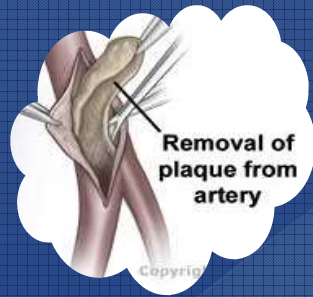
### 3. Compression resistance





# Alternatives for “Golden standards” ?

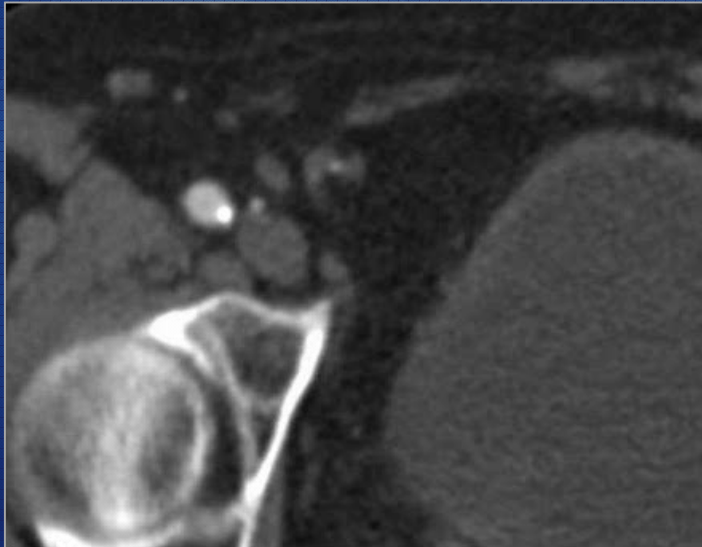
- Common femoral artery
- Bypass Rescue





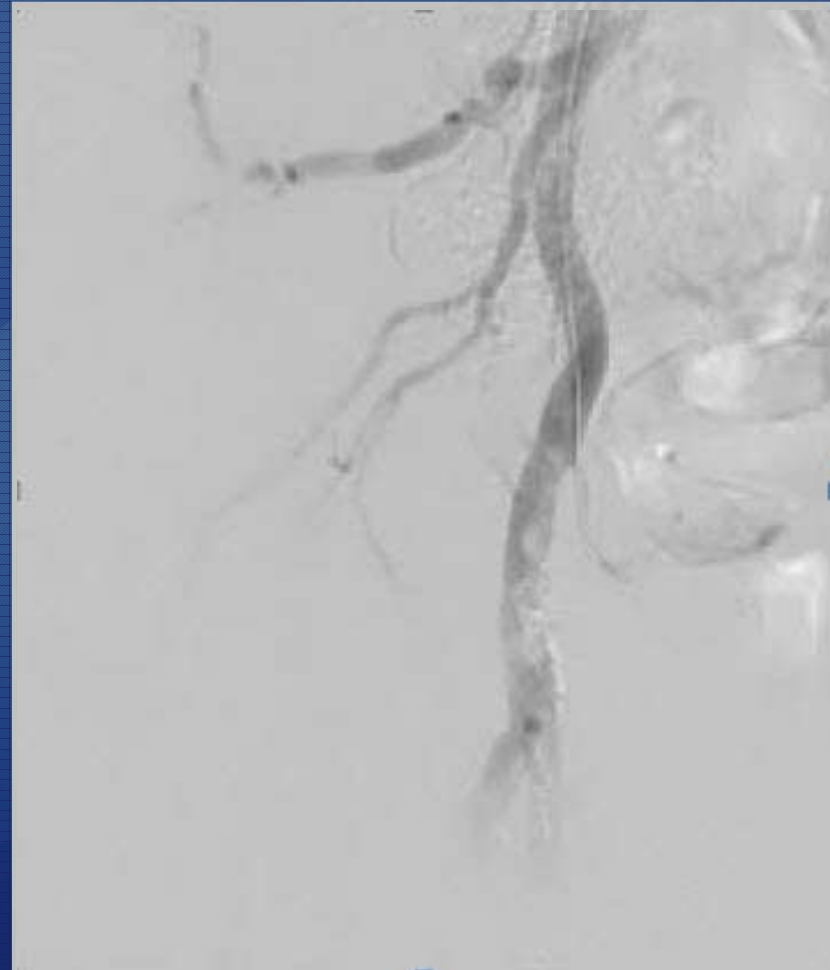
# Case

- 82 y Female
- Restpain R leg



# Case

- 6FR crossover sheath
- 0.018 glidewire
- PTA vessel prep : 7-80

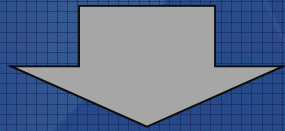




## Case

- Stent implantation
- Supera 6 – 80

(Abbott Vascular)



Durability ...

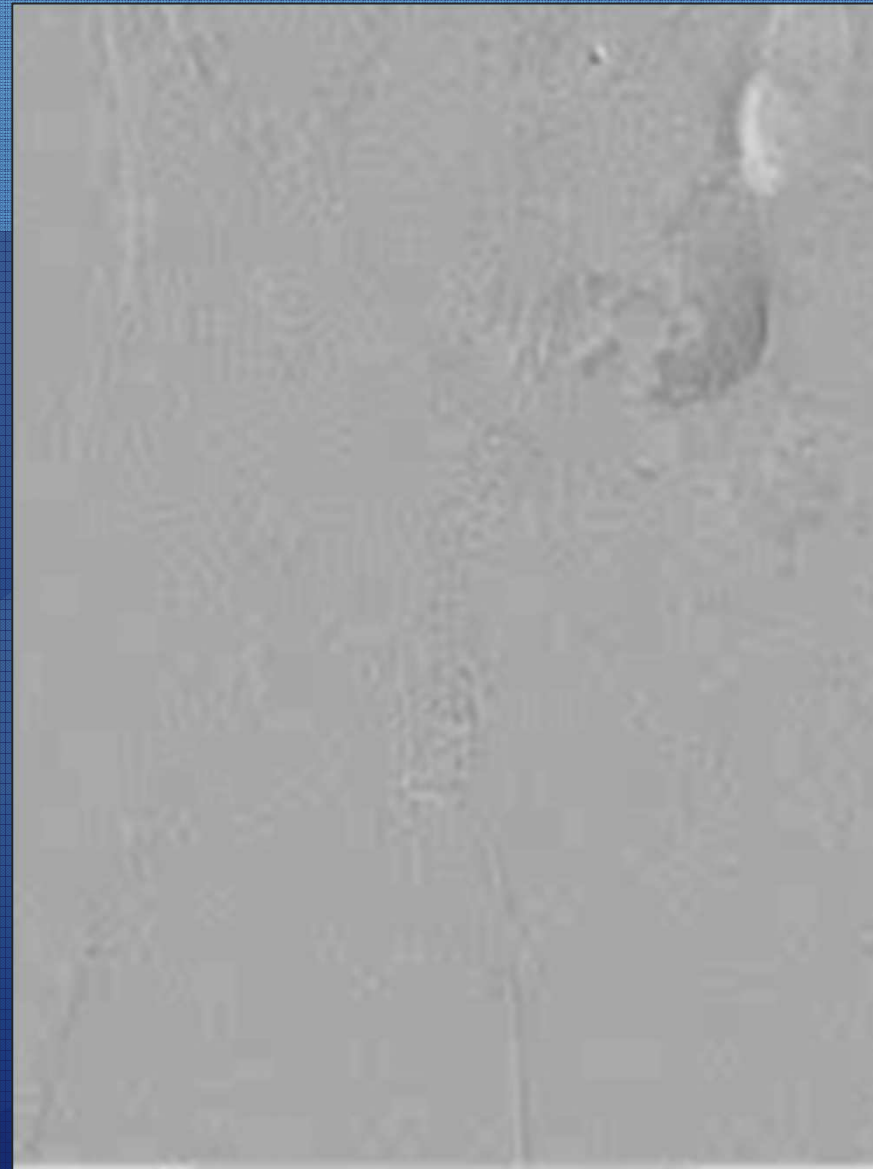
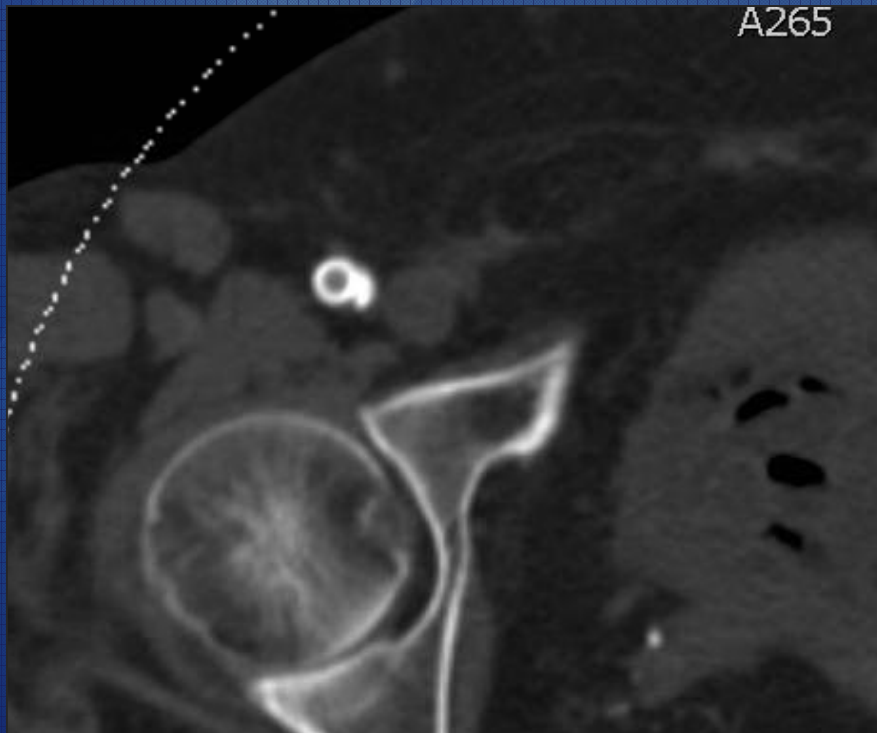
Puncture ...





# Case

- 1 year follow up



## Case

- Female patient 83y
- BMI 31
- CLI of R Foot with extensive gangrene





## Case

- PTA vessel prep : 7-40
- Stent implantation  
Supera 6-40  
(Abbott Vascular)





## Case

- Male patient 85y
- Restpain left leg
- Endarterectomy L AFC
- Stenting L ext iliac art



# Case

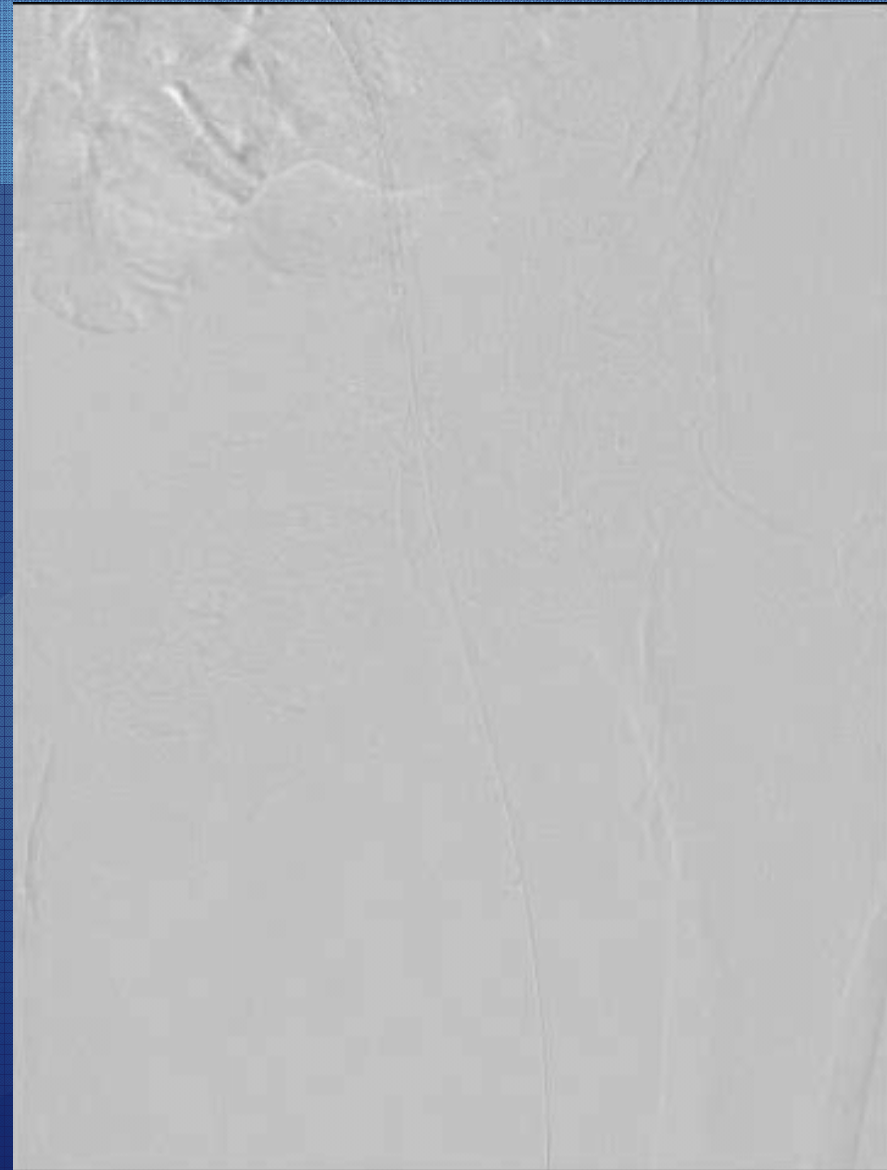
- Crossover angiography





## Case

- Crossover 6Fr Sheath
- 0.035 glidewire
- DEB dilatation 6 – 60  
(Lutonix – Bard)





## Case

- Supera 6 – 80  
(Abbott vascular)
- postdilatation





# Common Femoral Artery Stenting

- 9 patients
- 4 ♀, 5 ♂
- Mean follow-up : 8 m
- Major clinical improvement
  - 1 / 9 needed an additional PTA (DEB)
  - No puncture problems





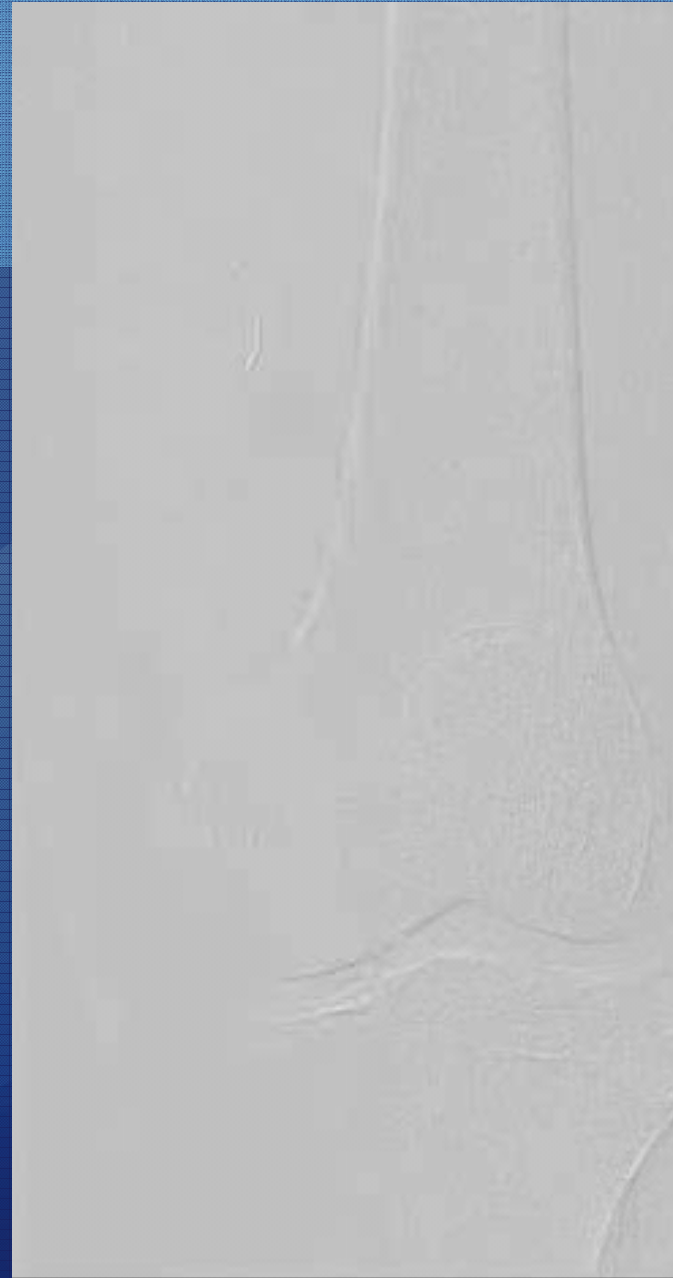
# Case

- Male patient
- 70y
- Fem pop bypass L
- Recurrent claudication
- Slow flow on duplex US



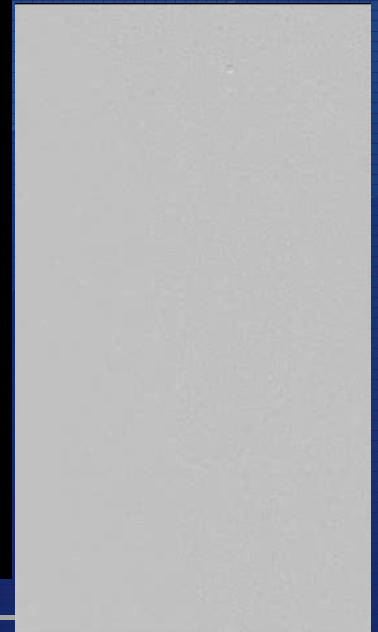
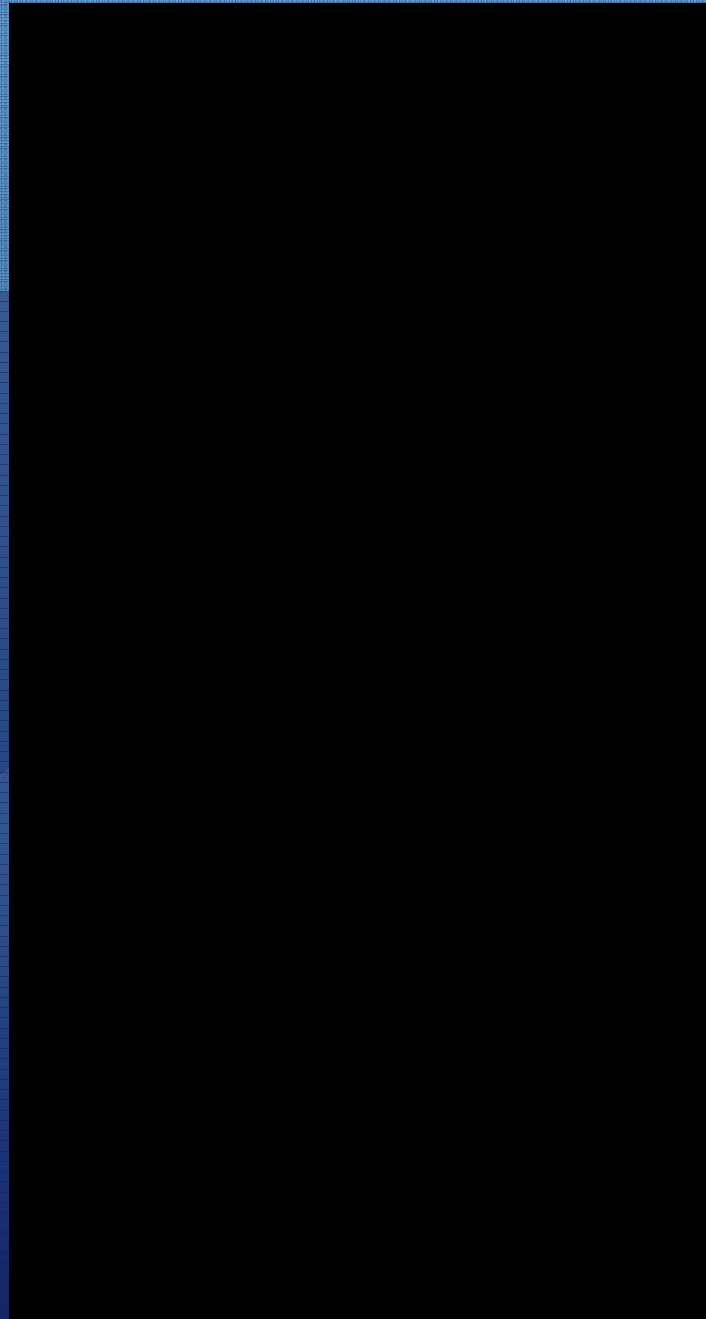
## Case

- 67 Y Male
- Left Fem-pop bypass
- Recurrent claudication
- R crossover access 6FR
- 0.035 Glidewire



## Case

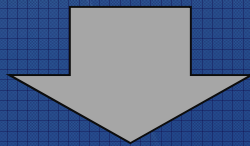
- Intraluminal recanalisation with drilling technique
- 0.018 guidewire
- BER support cath





## case

- (Pre)dilatation  
Passeo DEB 5 – 80  
(Biotronik)



Dissection and recoil



# Case

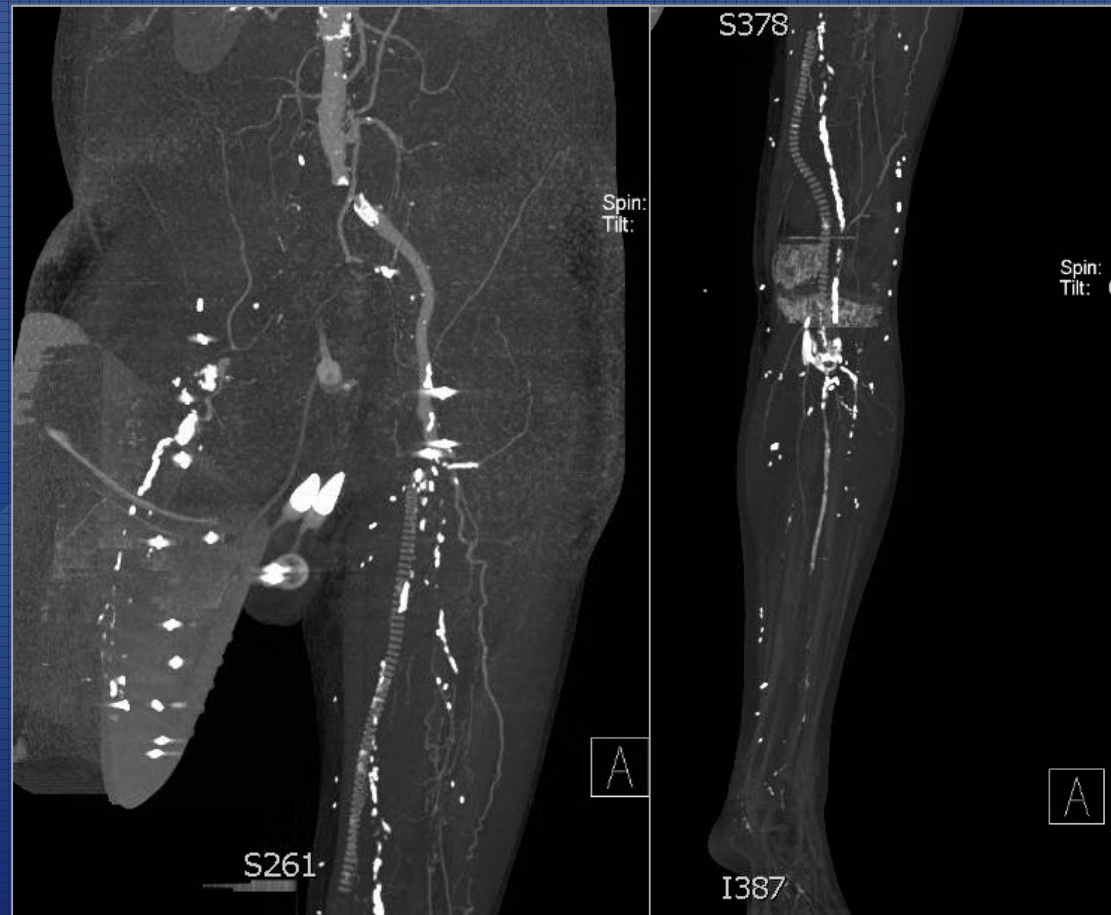
- Stent implantation
- Supera 5 – 80  
(Abbott Vascular)





# Case

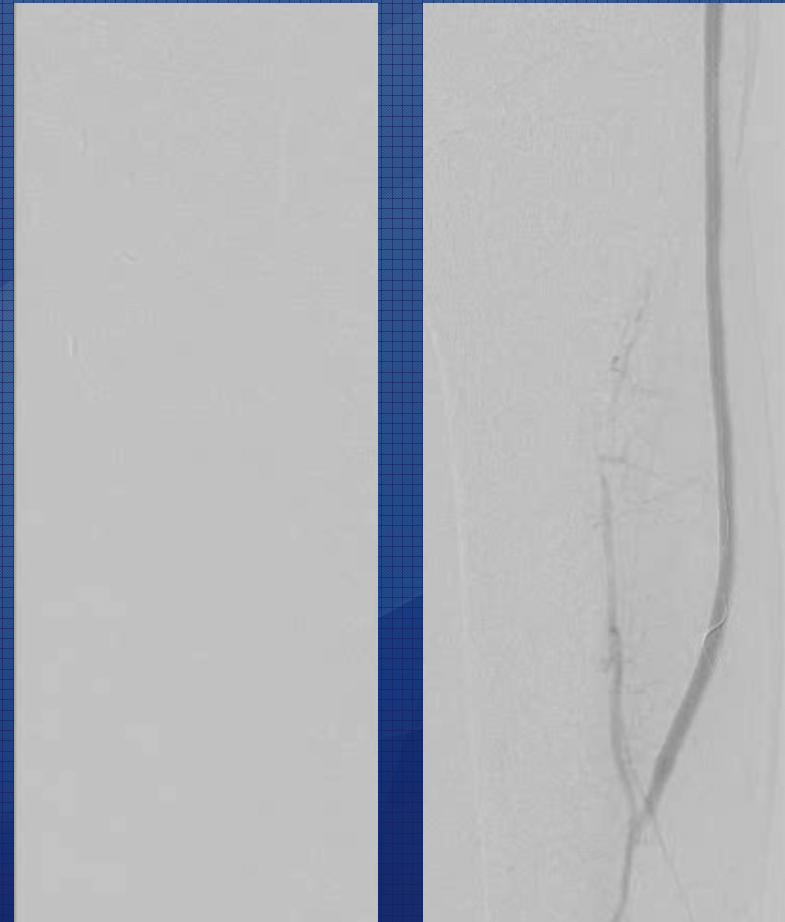
- Multiple vascular procedures
- Ruth Stage 5





# Case

- Recanalisation of the venous extra-anatomical occluded fem-tib bypass
- Vessel Prep PTA (5 mm)
- Stenting of the bypass  
Supera 5-200 (Abbott Vasc)





# Conclusion

- When we open our mind for Biomechanics ...
- When we allow changes in our daily practice ...

Surgical “landing-zones” might be ready for endovascular treatment

