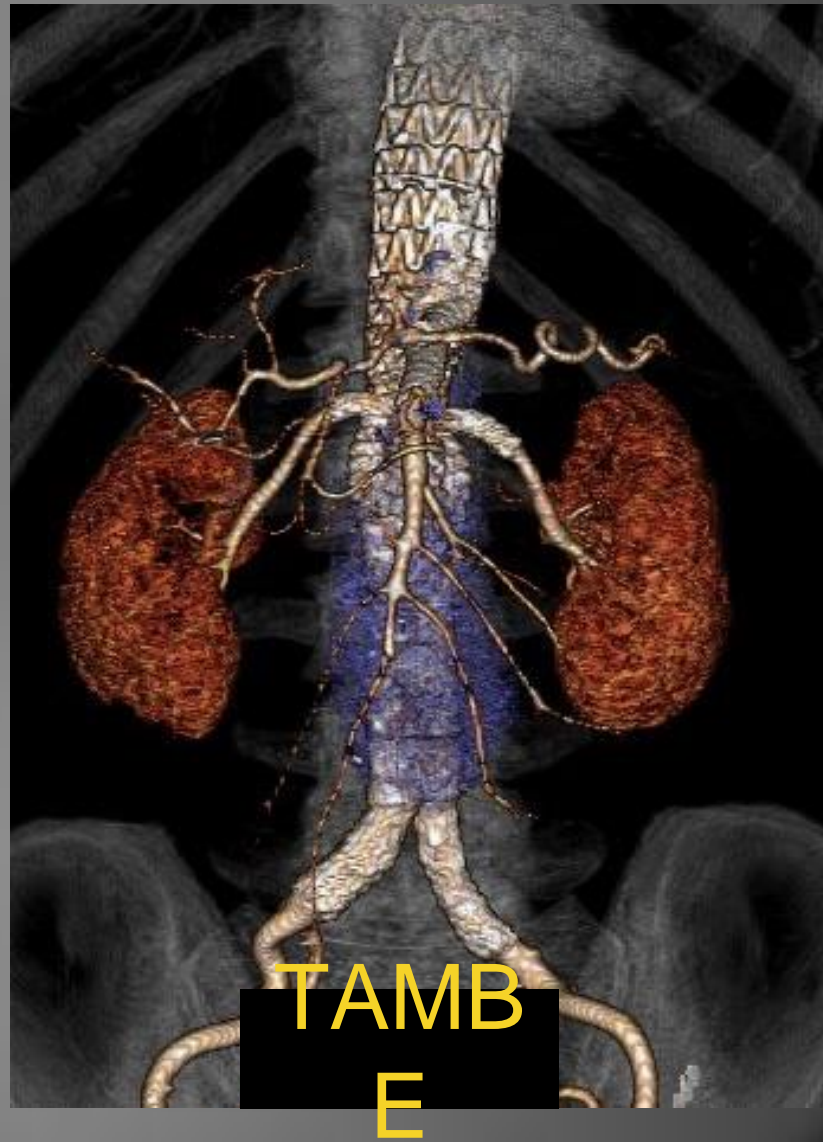


# Early Experience with an off the shelf branched endograft



Mark A Farber  
Professor of Surgery and Radiology  
Director, UNC Aortic Center  
University of North Carolina



# Disclosures

- WL Gore:
  - Consultant, Clinical Trials



# Gore TAMBE

TAMBE



VBX



# TAMBE Configurations

## Retrograde Renals



## Antegrade Renals





# TAMBE Configurations

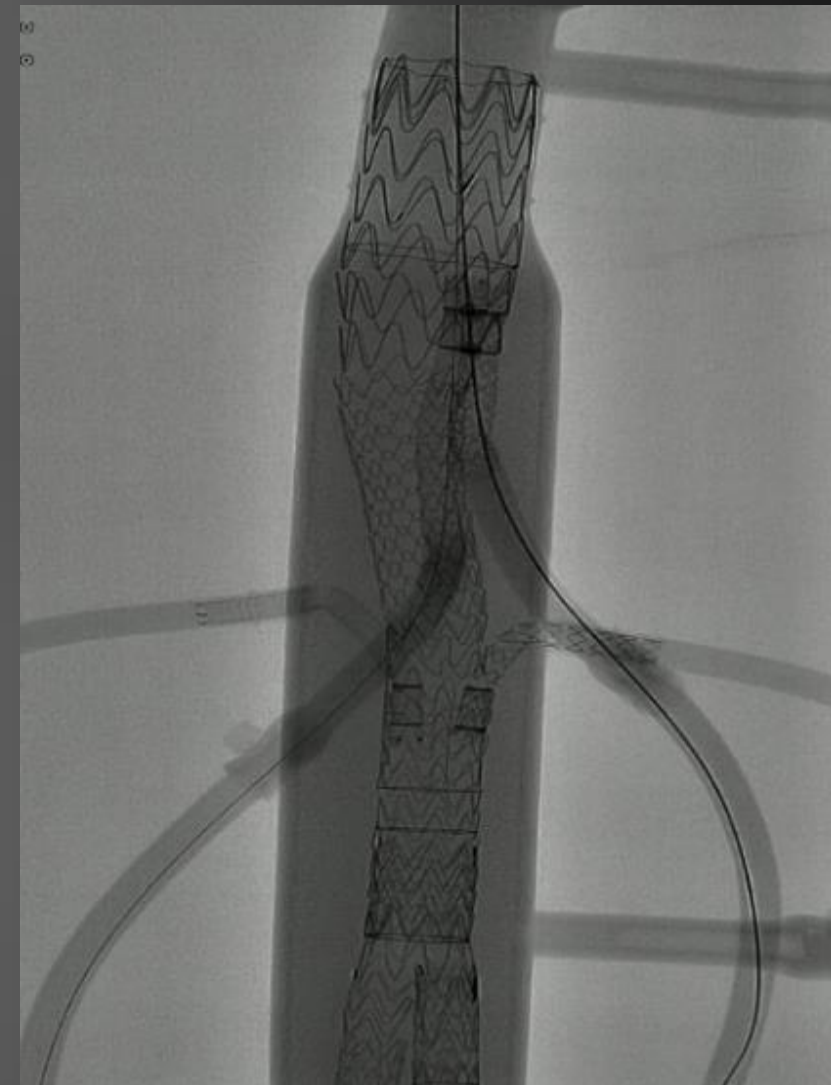
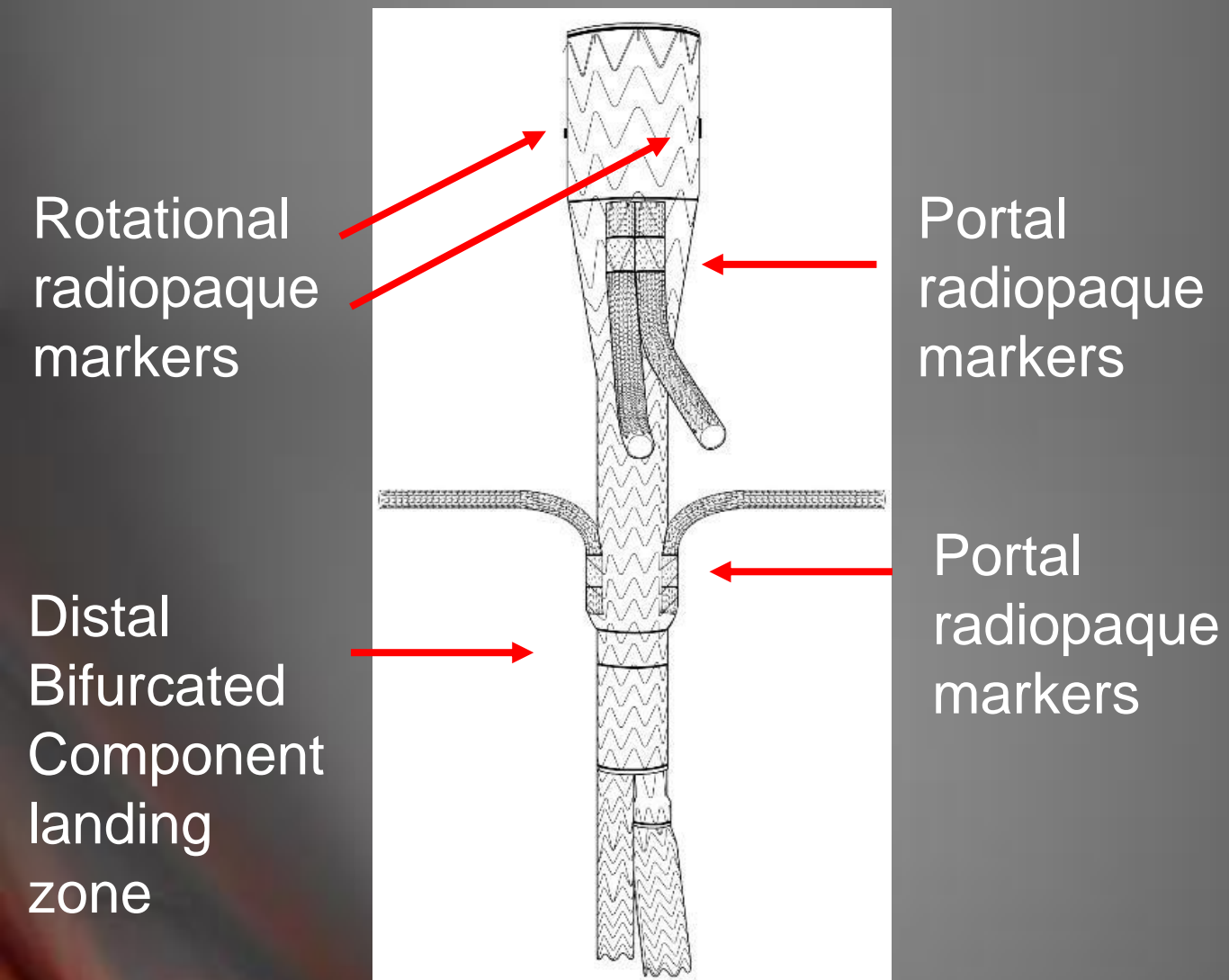


Gore will be evaluating both configurations during the Early Feasibility Study, with a focus on:

- Device ease of use (e.g., procedure time)
- Anatomic applicability

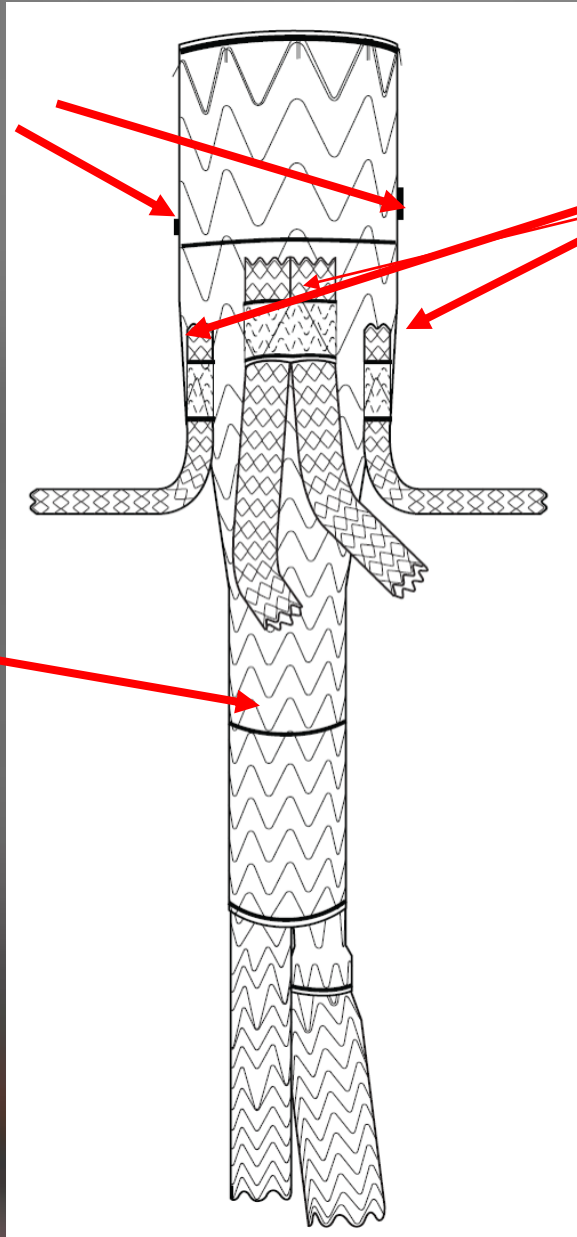


# Radiopaque Marker Locations (Retrograde)



# Radiopaque Marker Locations (Antegrade)

Rotational  
radiopaque  
markers



Portal  
radiopaque  
markers

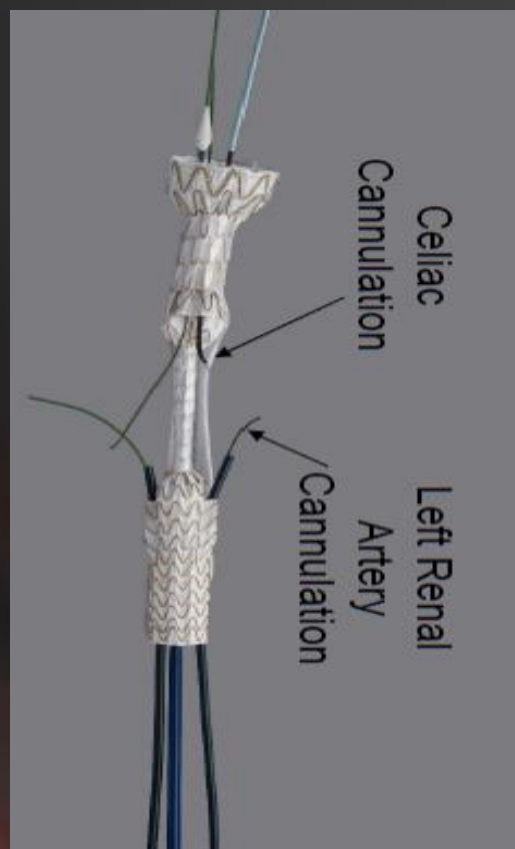
Distal  
Bifurcated  
Component  
Target





# TAMBE Device Features (Antegrade & Retrograde)

- Multi-stage deployment with proximal, distal, and rotational repositionability to aid in branch vessel access and deployment accuracy

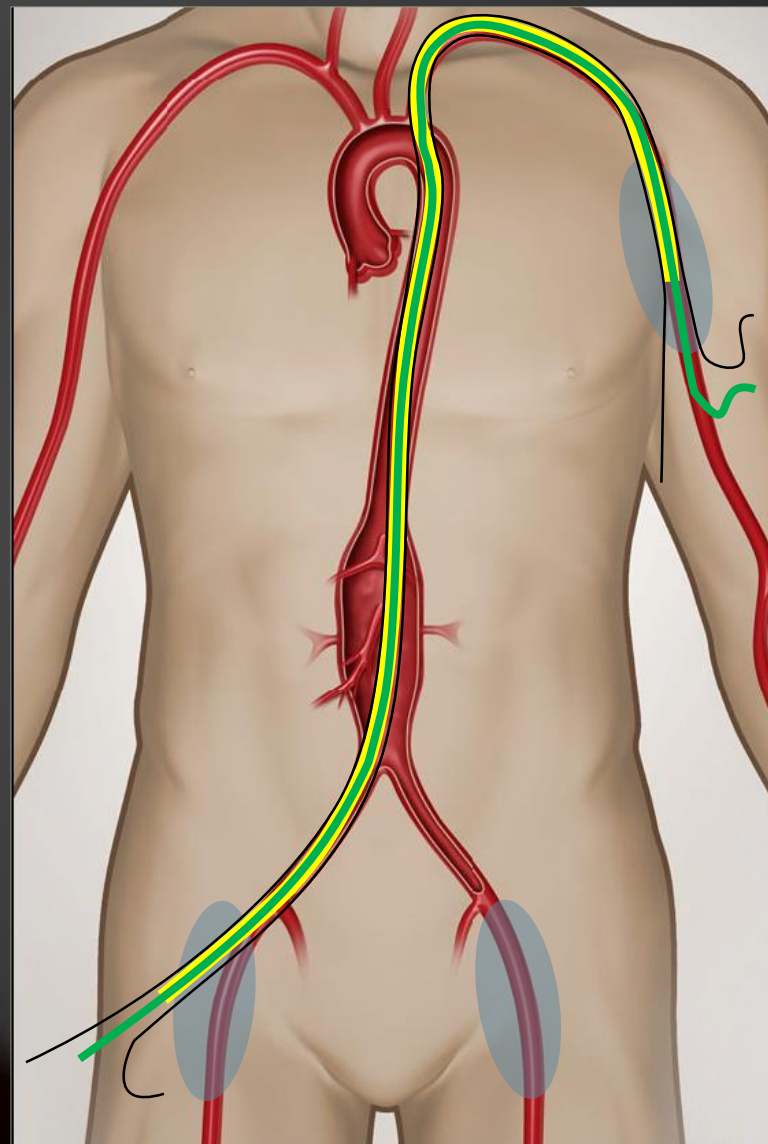




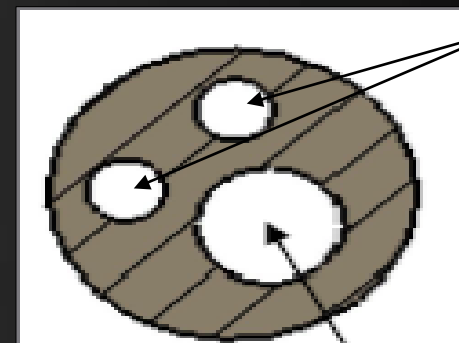
# TAMBE Device Features (Antegrade & Retrograde)

- Tri-lumen catheter to facilitate through-and-through guidewires and prevent entanglement

Tri-Lumen  
Catheter  
0.035" wire  
0.014/0.018"  
wires (2x)



Tri-Lumen  
Catheter  
Cross-Section



0.014/0.018"  
Lumens

0.035" Lumen



# TAMBE Device Features (Antegrade & Retrograde)

- Conformable, kink-resistant side branch components with CBAS® Heparin Surface
- GORE® VIABAHN BX Endoprosthesis



© 2014 W.L. Gore & Associates, Inc.



# Partial Deployment

1/15/2016  
11:12:25 AM

cm 32  
A  
RAO 4° / CRAN 8°

EE 17%  
DDO 70%

WC 1700  
VW 2077

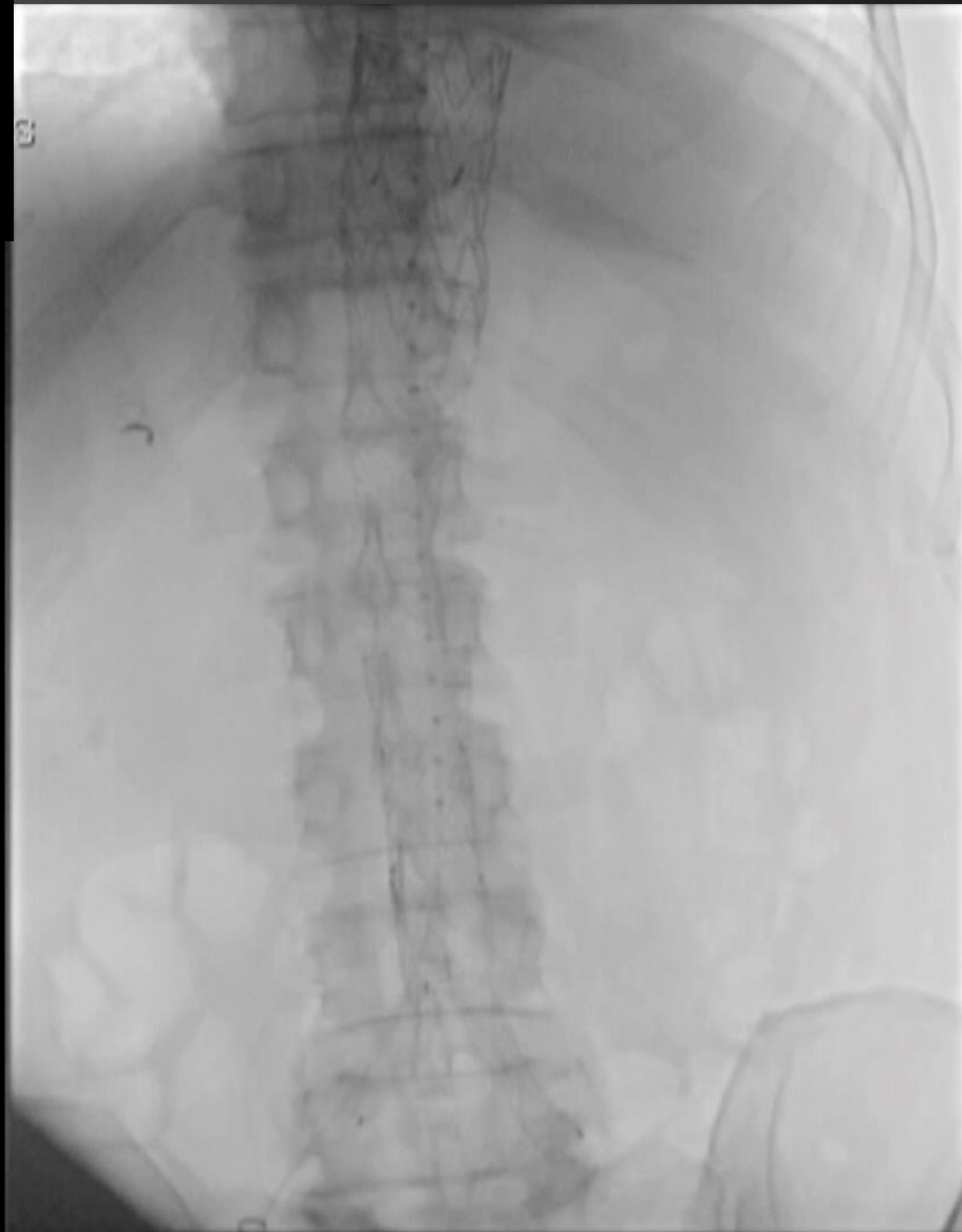




# Completion Angiogram

1/15/2016  
1:15:18 PM

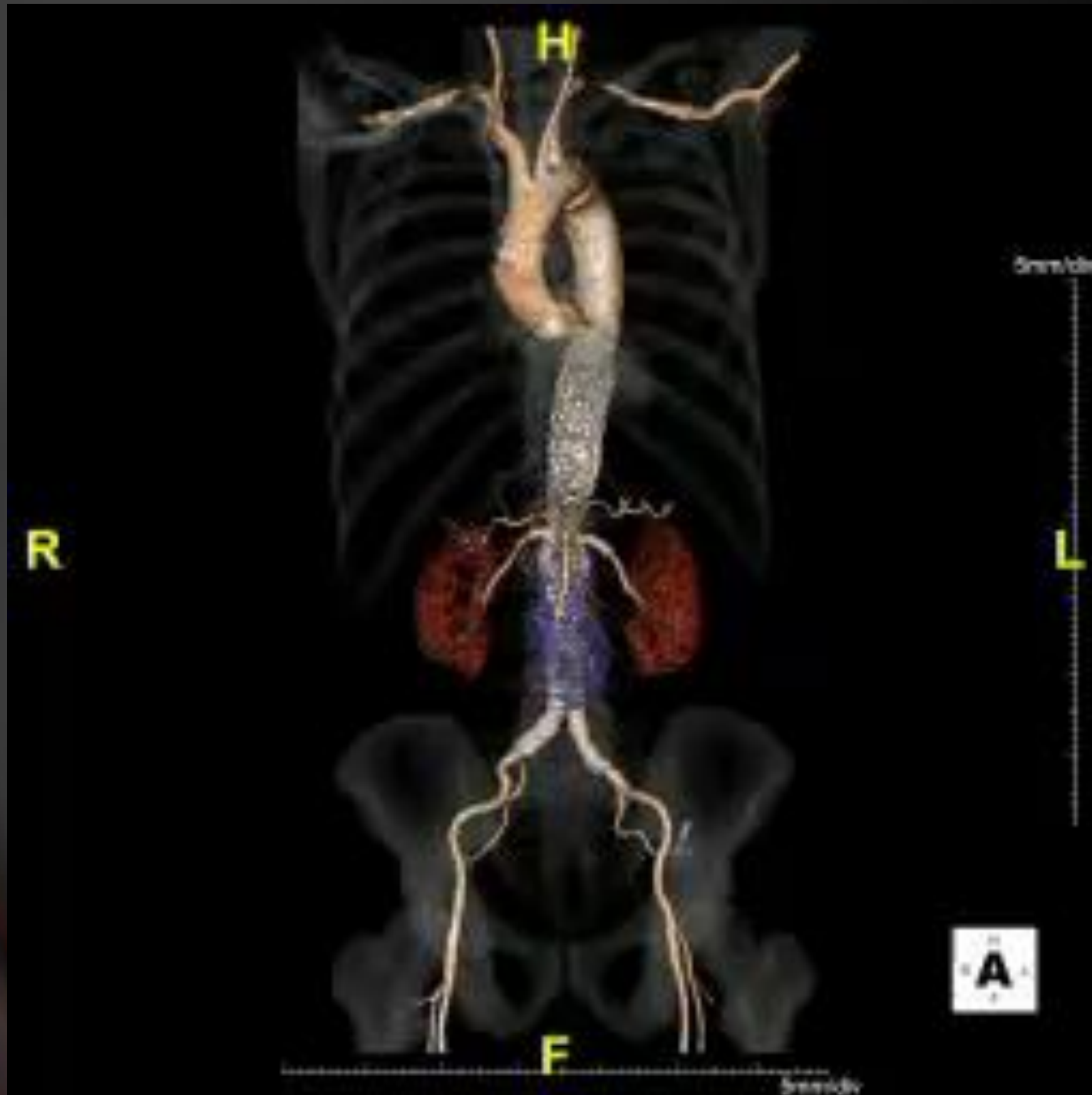
cm 48  
A  
0° / CAUD 2°



EE 14%  
DDO 70%

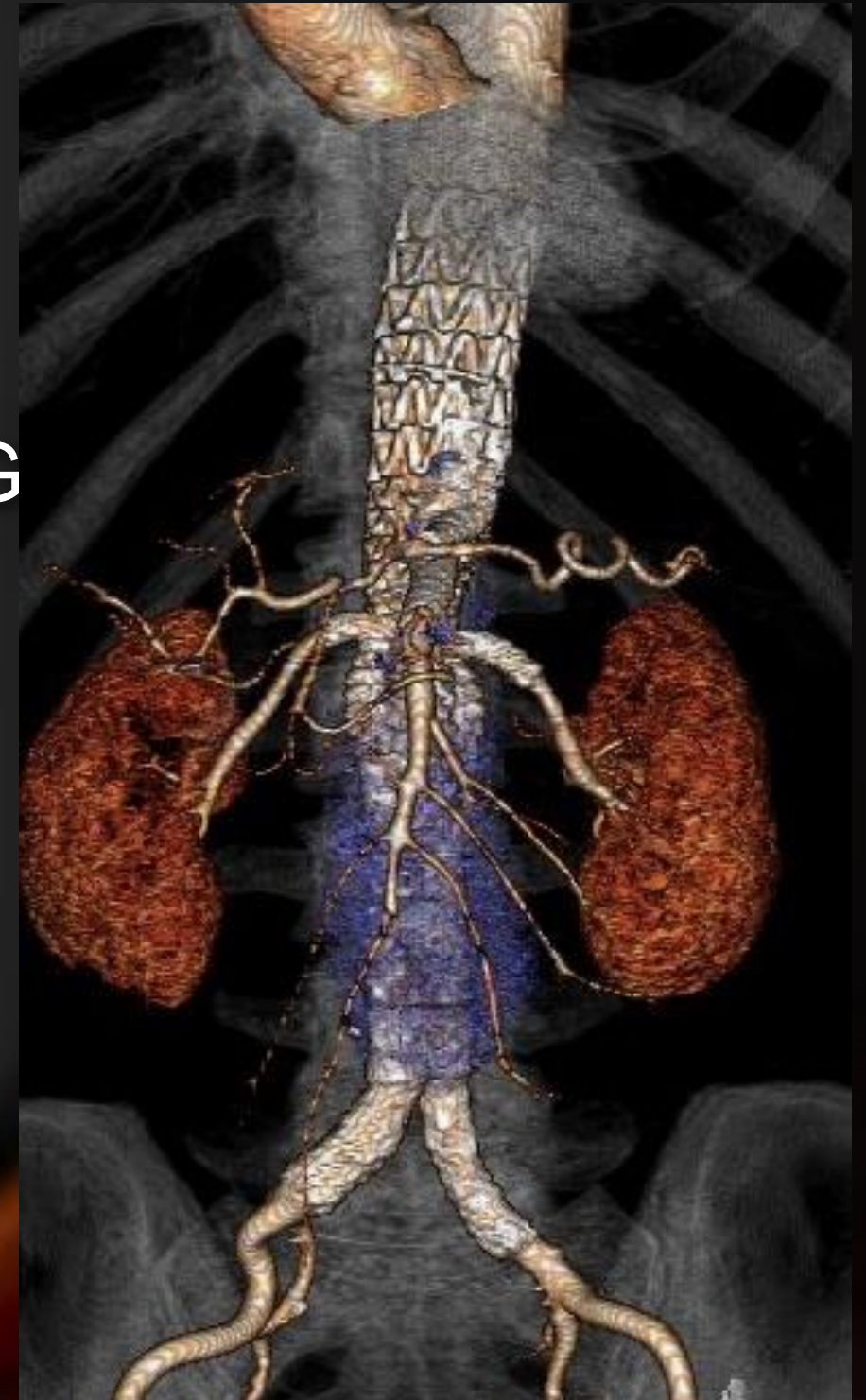
WC 1700  
WW 2200

# One month CT



# Clinical Experience

- **13 Implants worldwide**
  - Florianopolis (Silveira) - 3 RG
  - Mayo Clinic (Oderich) - 5 (1 RG/3 AG)
  - UNC (Farber) - 2 (1RG/ 1AG)
  - UPMC - 1 AG
  - Mt Sinai - 1 AG
- No device related complications with implantation





# Conclusions

- Thoracoabdominal Branch Endoprosthesis (TAMBE)
  - Early feasibility with balloon expandable viabahn have been positive
  - Follow-up is short
  - Pivotal Clinical Trial Expected is imminent

