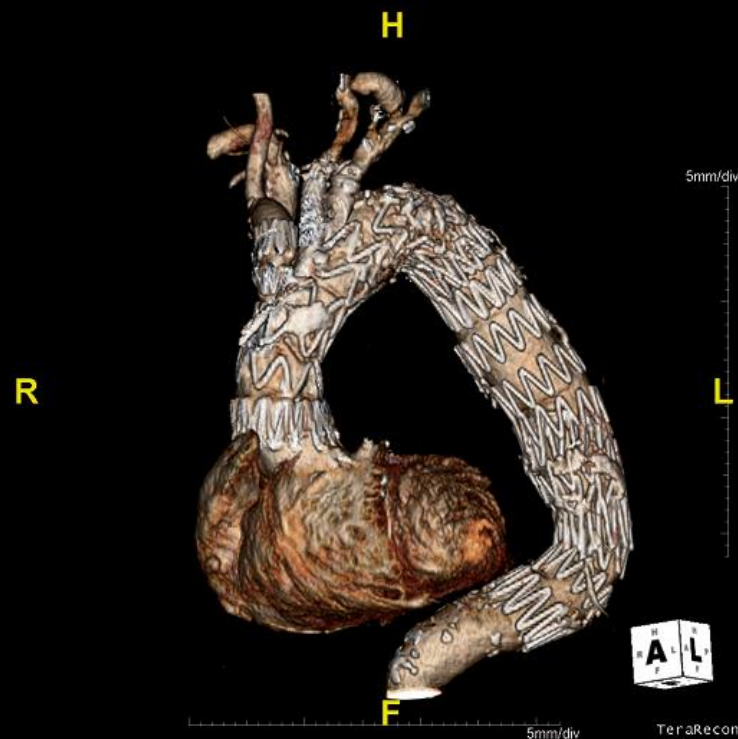


16TH INTERNATIONAL EXPERTS SYMPOSIUM
CRITICAL ISSUES
in aortic endografting 2012



Bolton Branched Endograft

W. Anthony Lee, MD, FACS
Director of Endovascular Program
Christine E. Lynn Heart and Vascular
Institute
Boca Raton, Florida

May 24 & 25
LILLE, FRANCE

2012

Faculty Disclosure



W. Anthony Lee, MD

I disclose the following financial relationships:

Consultant for Cook, Bolton

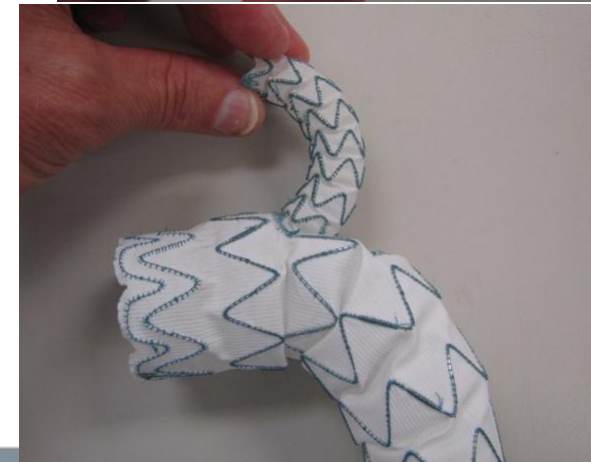
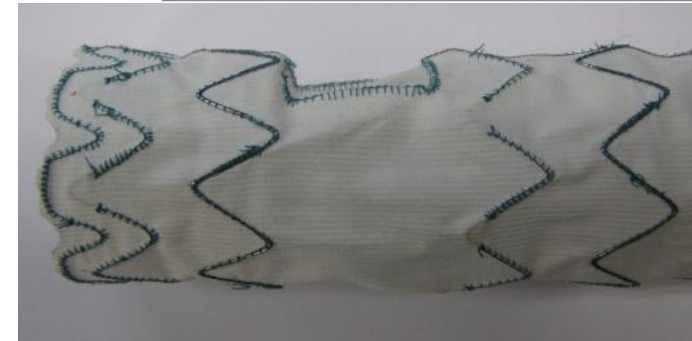
Receive grant/research support from Cook

Paid speaker for Cook, Bolton



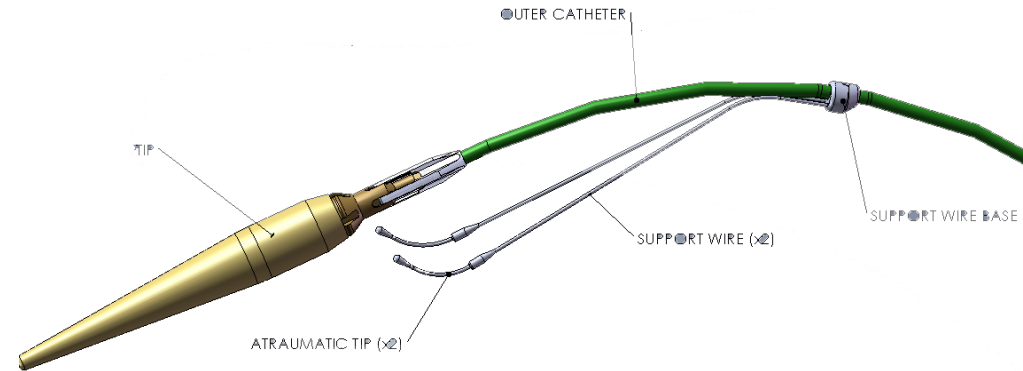
Relay Branched Thoracic Endograft

- Based on Relay NBS (Non Bare Stent) Plus platform
- Single internal branch (innominate)
- Intended for Zone 0 deployment combined with extra-anatomic arch branch bypass(es): carotid-carotid(-left subclavian)



Relay NBS Plus

- Improved arch conformation and prevent retroflex deployment
- Self-orienting



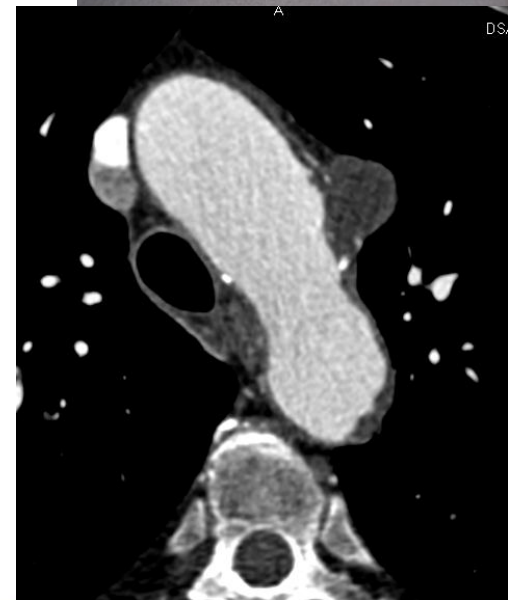
5 Cases to Date

- Case 1 (Martinelli and Rampoldi)
- Case 2 (Castelli and Piffaretti)
- Case 3 (Bortone)
- Case 4 (Camparini)
- Case 5 (Cao)

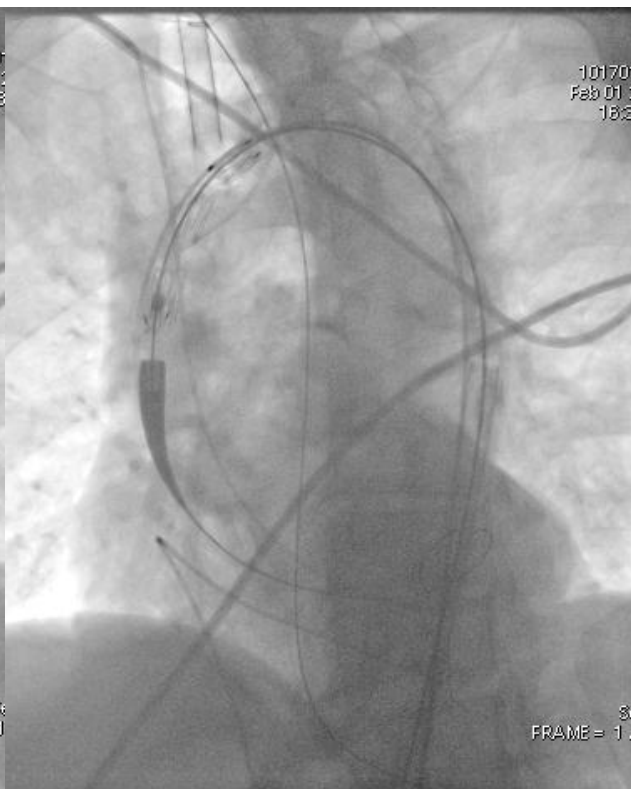
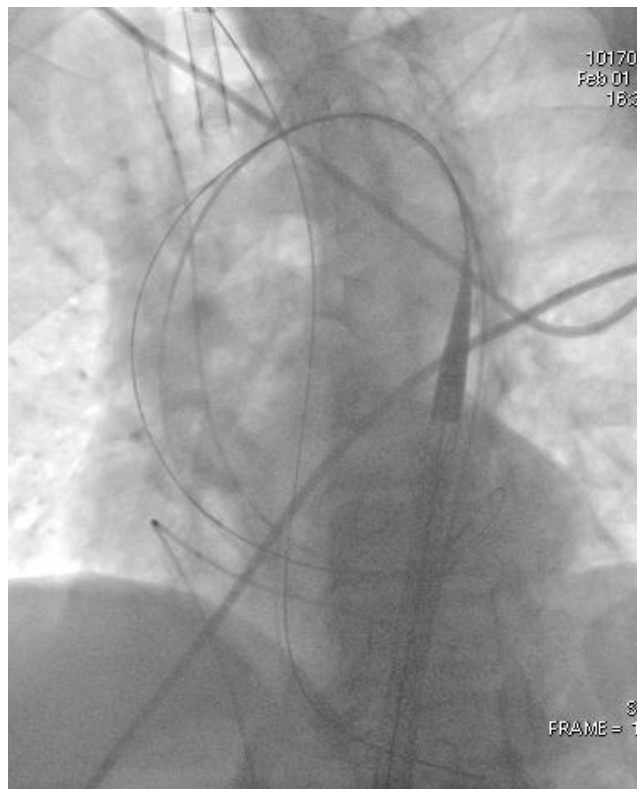


Case 1

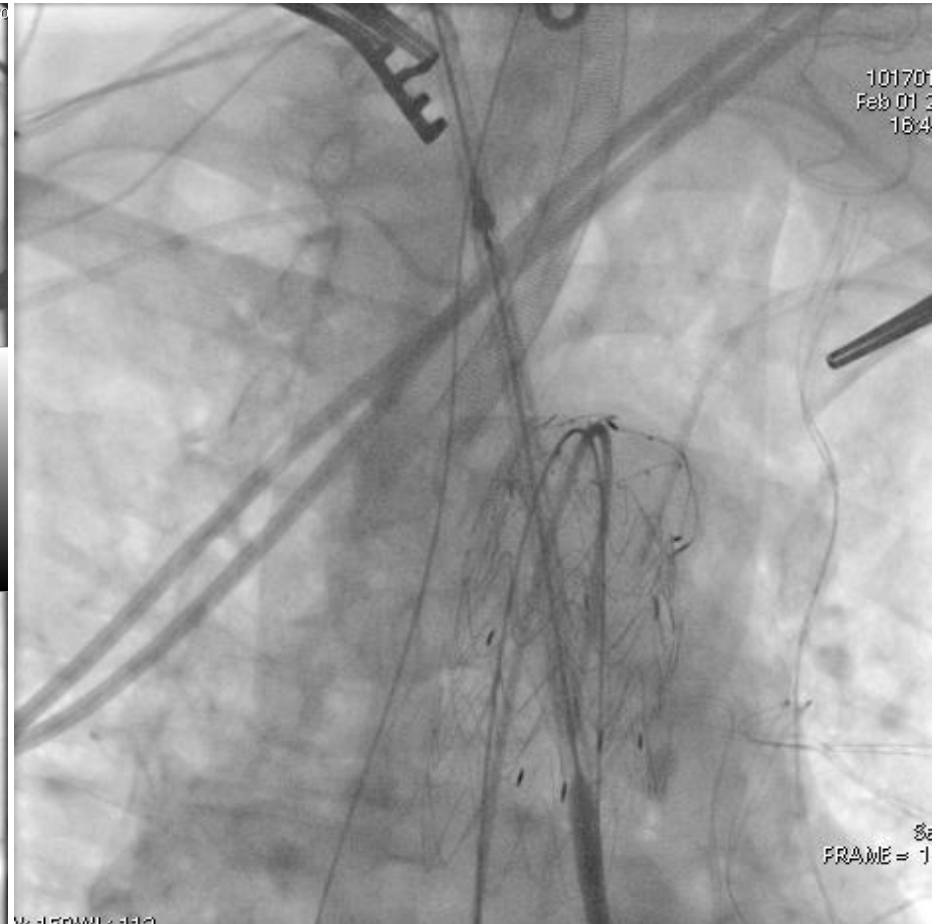
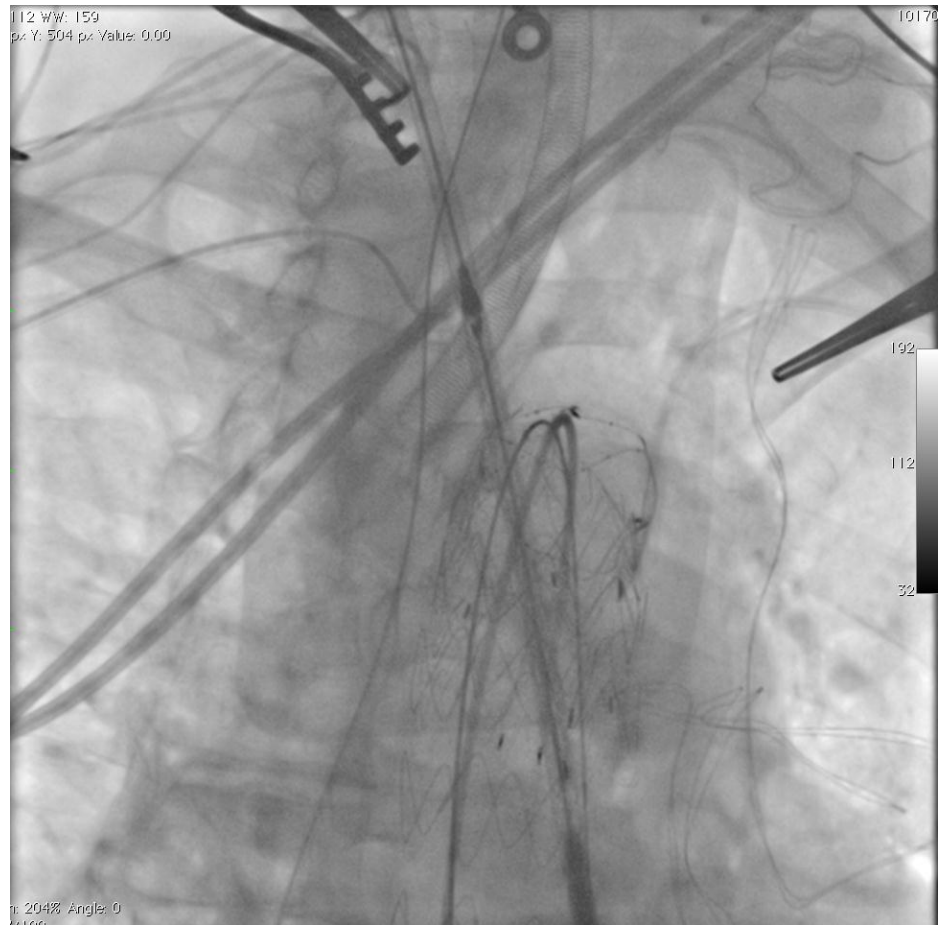
- 74 year old man
- Arch PAU
- PMH: COPD, diabetes, CRI

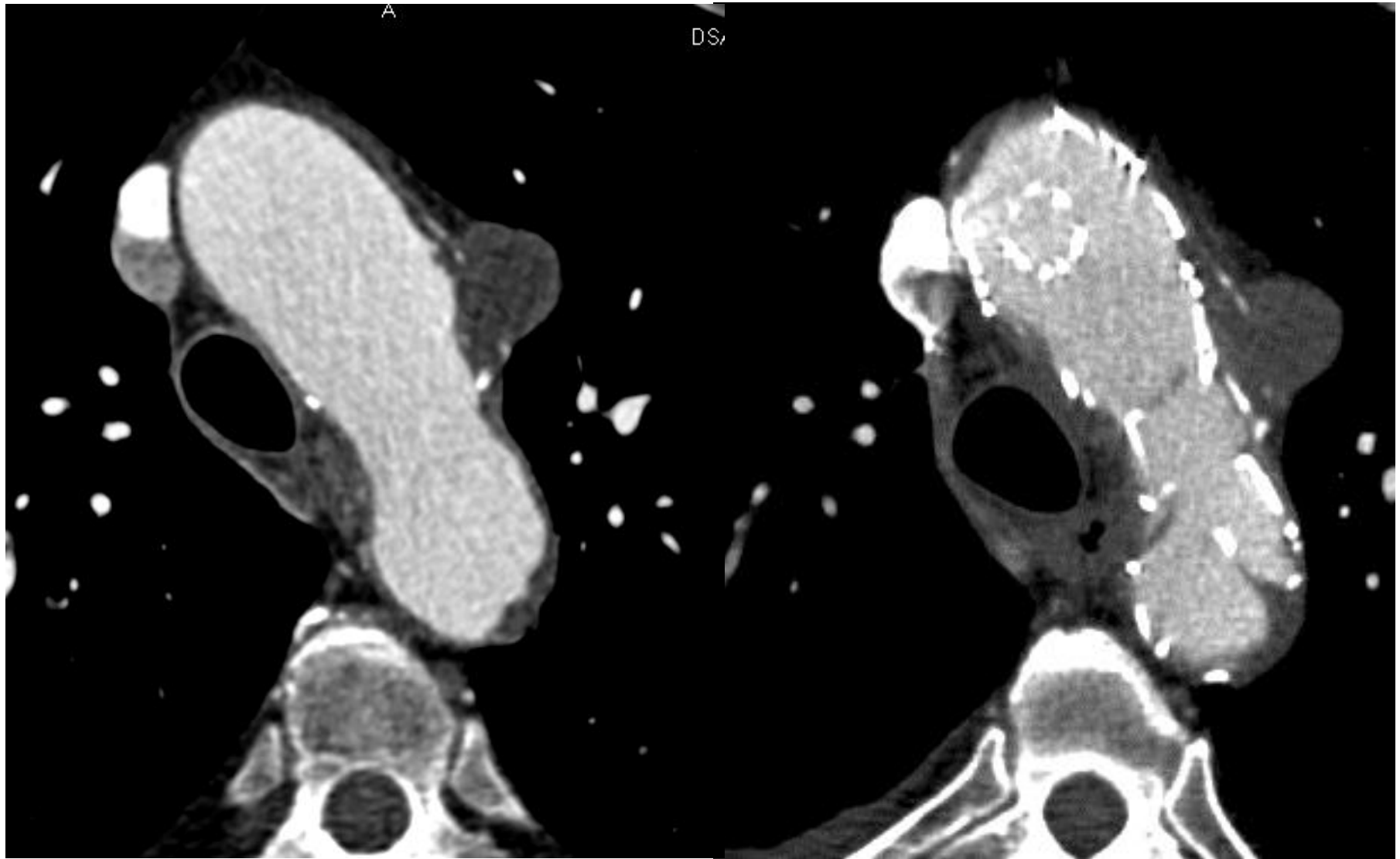


Courtesy of Drs. Martinelli and Rampoldi,
Hospital Niguarda, Milan, Italy



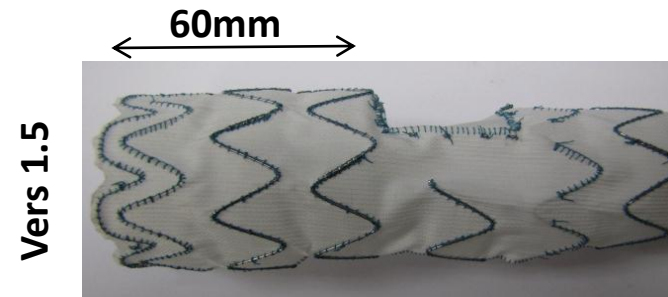
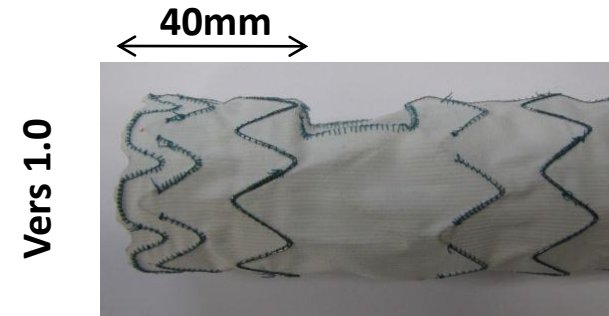
16TH INTERNATIONAL EXPERTS SYMPOSIUM
CRITICAL ISSUES
in aortic endografting 2012





Modifications from 1st case

- Increased length of graft segment proximal to tunnel entrance/window.
 - Increase sealing / anchoring length
 - Increase length of tunnel for greater telescopic ability of the branch graft
- Implemented support stent in the tunnel segment

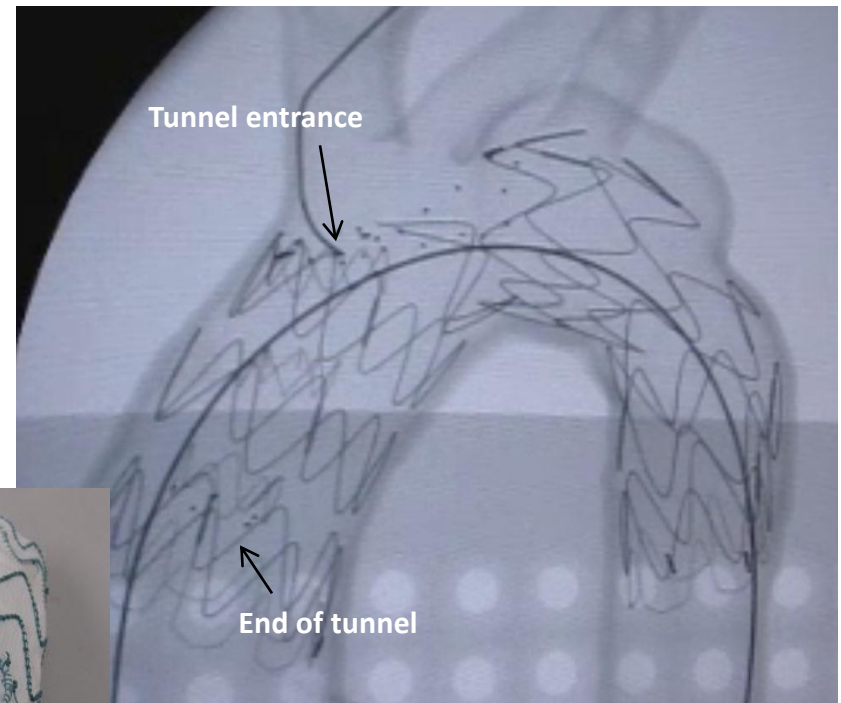
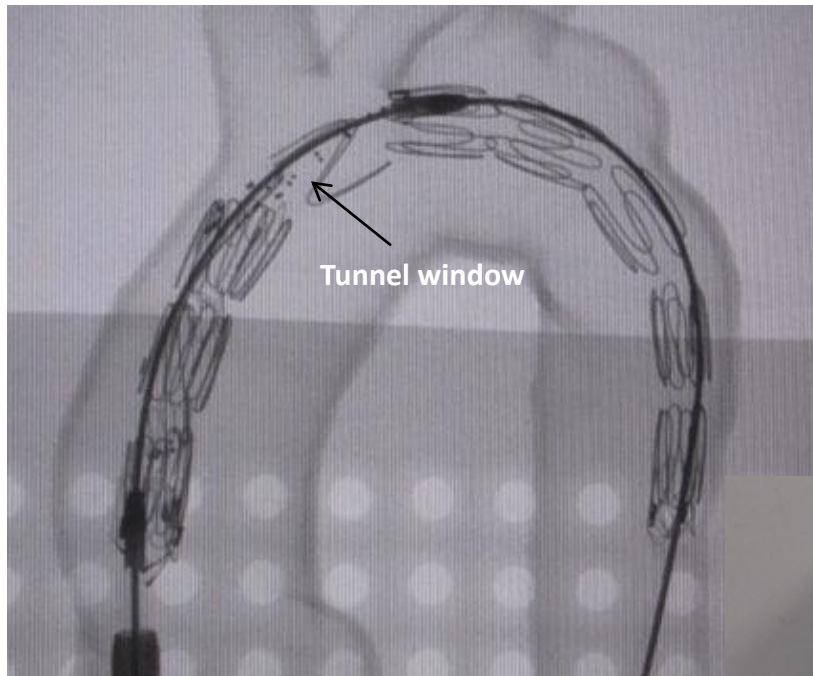


**Support
stent**



Modifications from 1st case

- Improved radiopaque marking of tunnel openings (prox/dist)

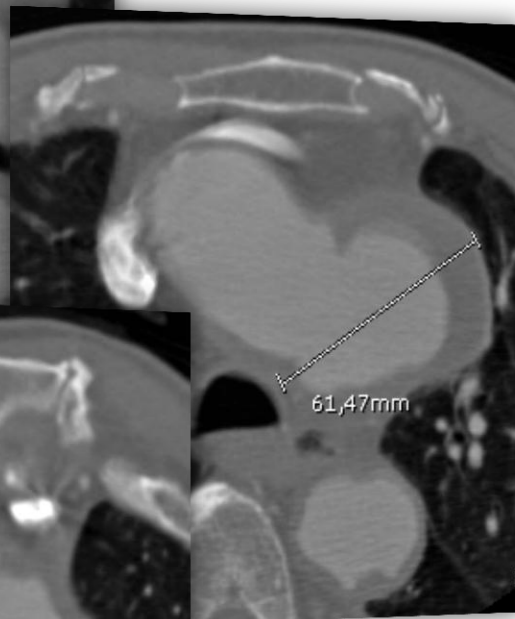
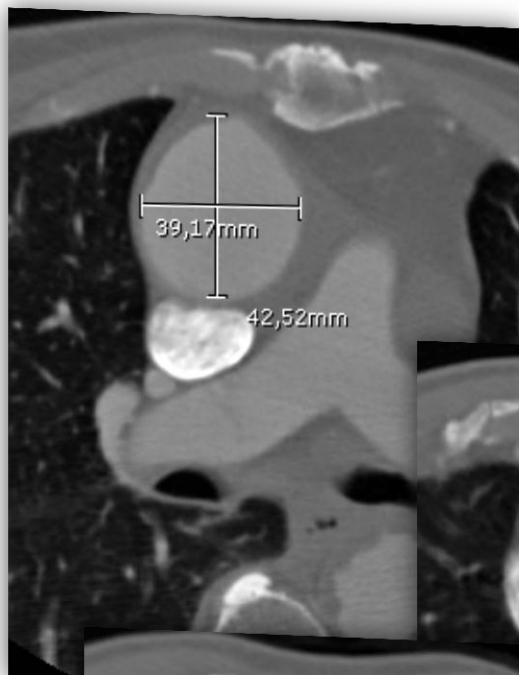


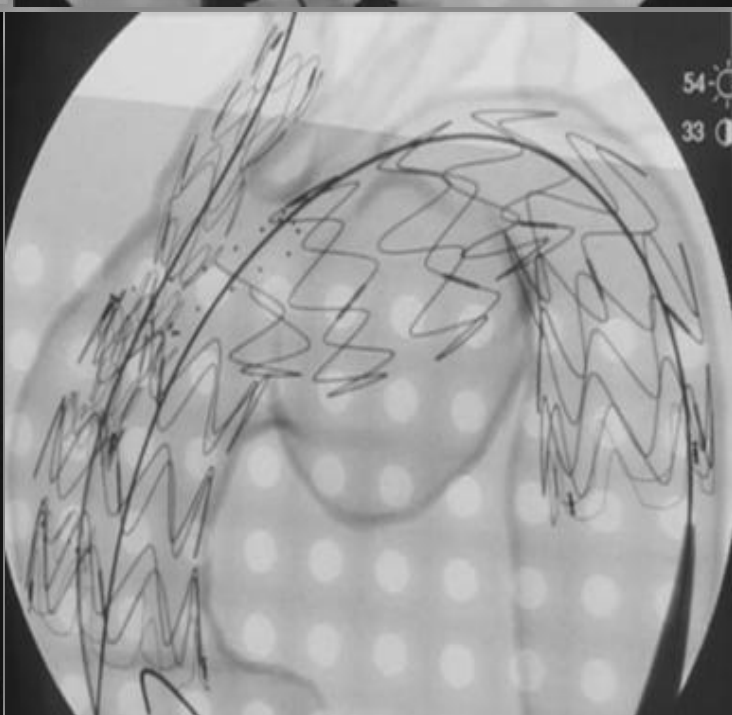
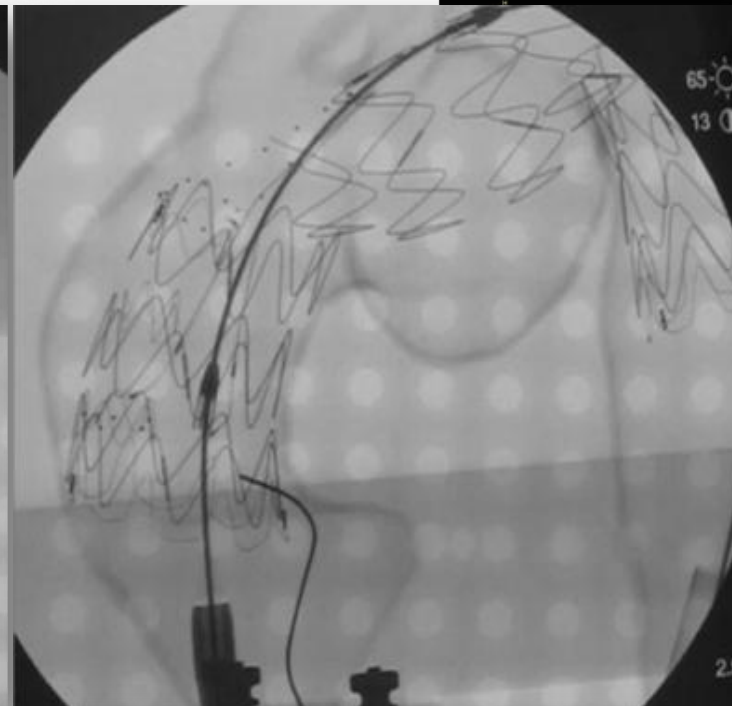
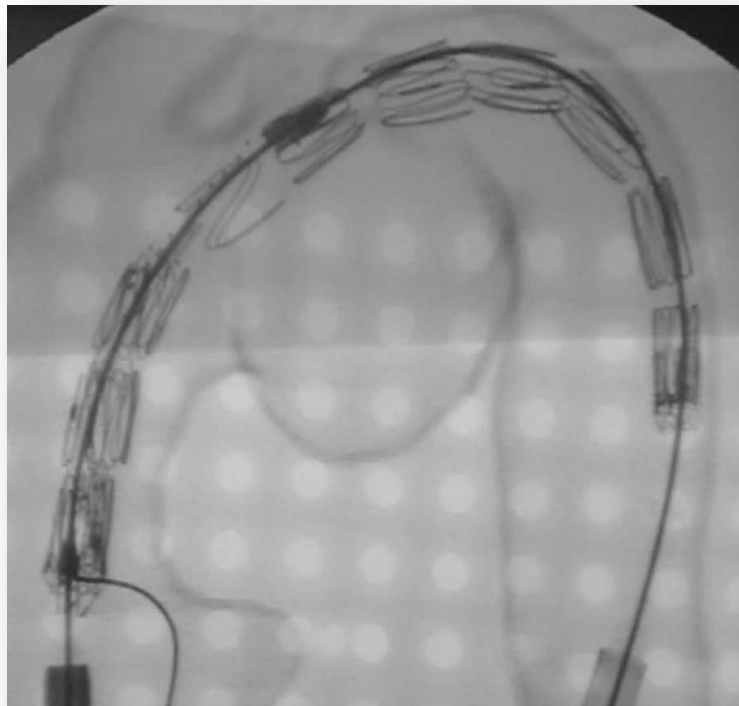
Case 2 (Varese, Italy)



- 81 year old man w/ Ortnier's syndrome
- Arch TAA
- PMH: Hypertension, COPD

Courtesy of Drs. Castelli and Piffaretti,
University of Insubria







16TH INTERNATIONAL EXPERTS SYMPOSIUM

CRITICAL ISSUES
in aortic endografting 2012

233745

8.09.1931

RHD1000

29

D

R 8

IH 1

0°

35 L 49

4.09.2011

49 of 83 (X)6

M

kV

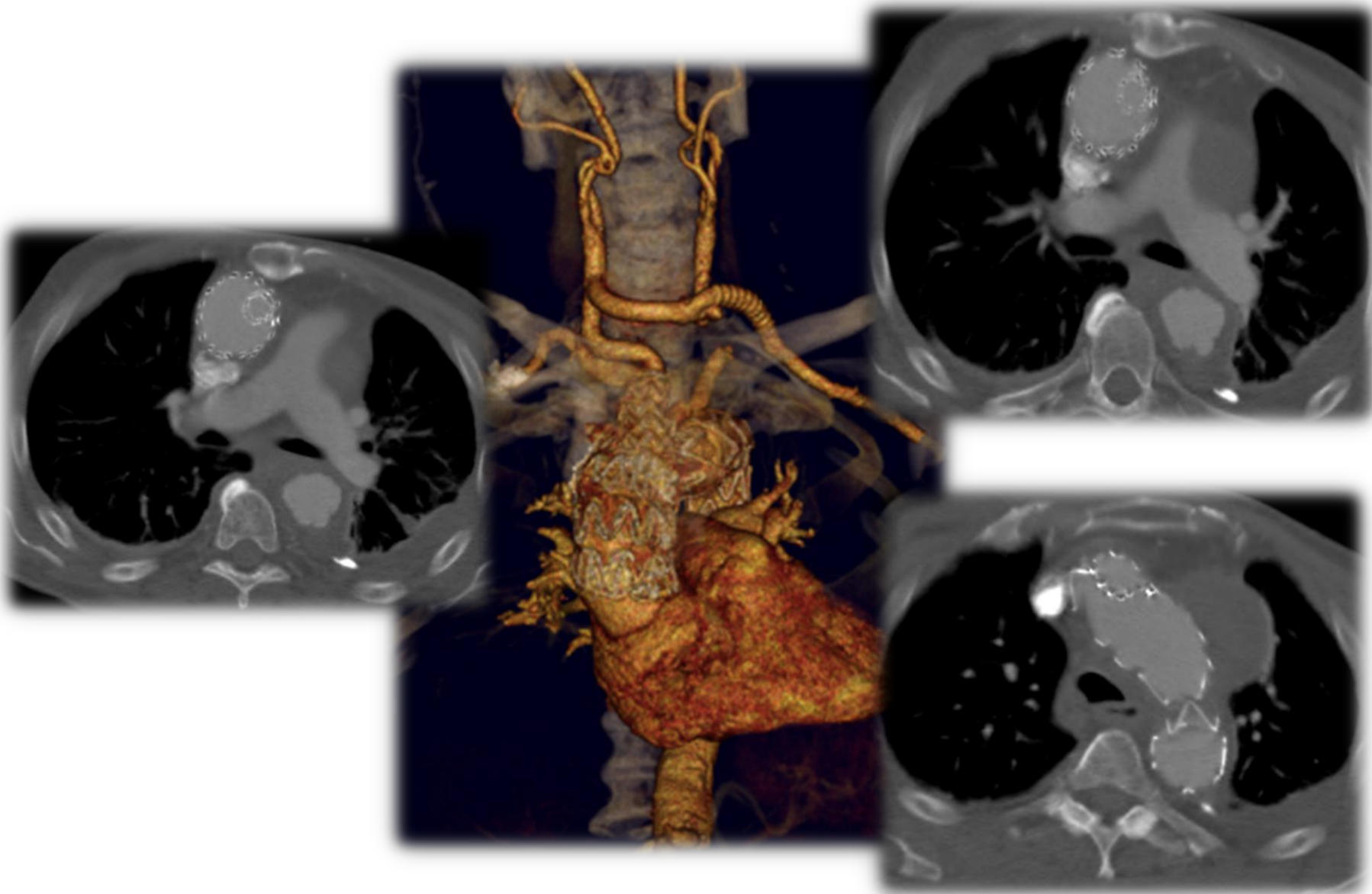
mA

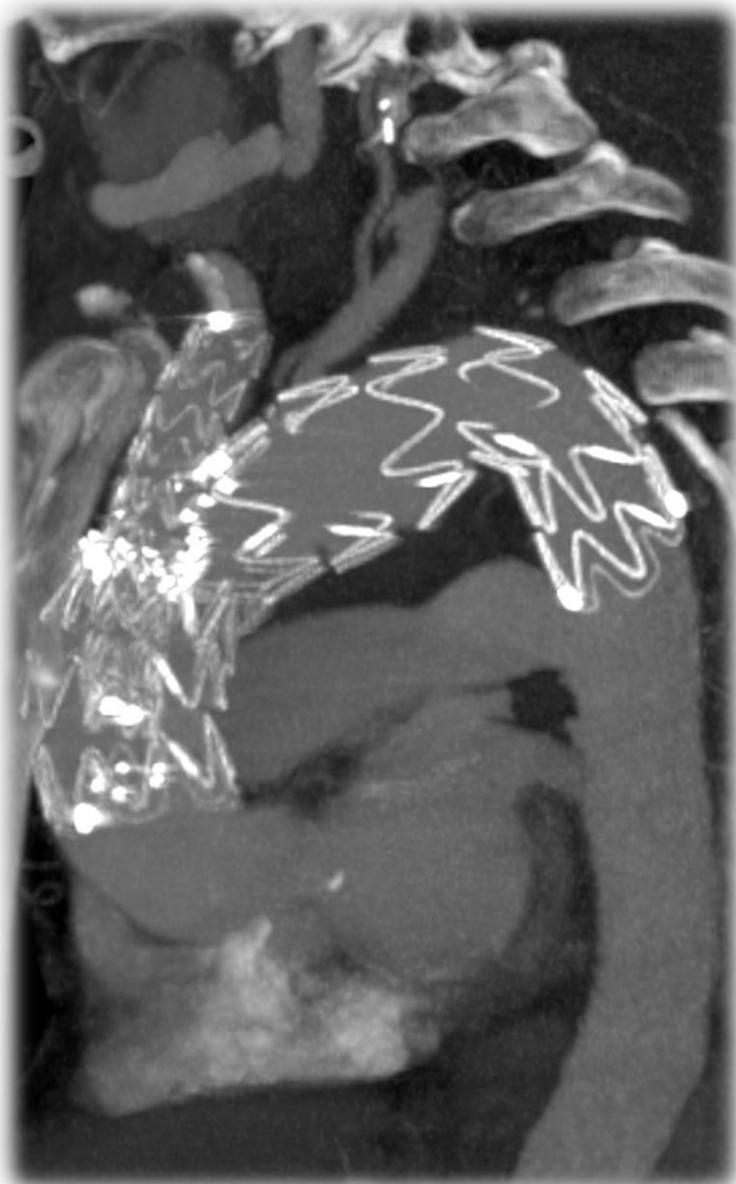
cG

17

min

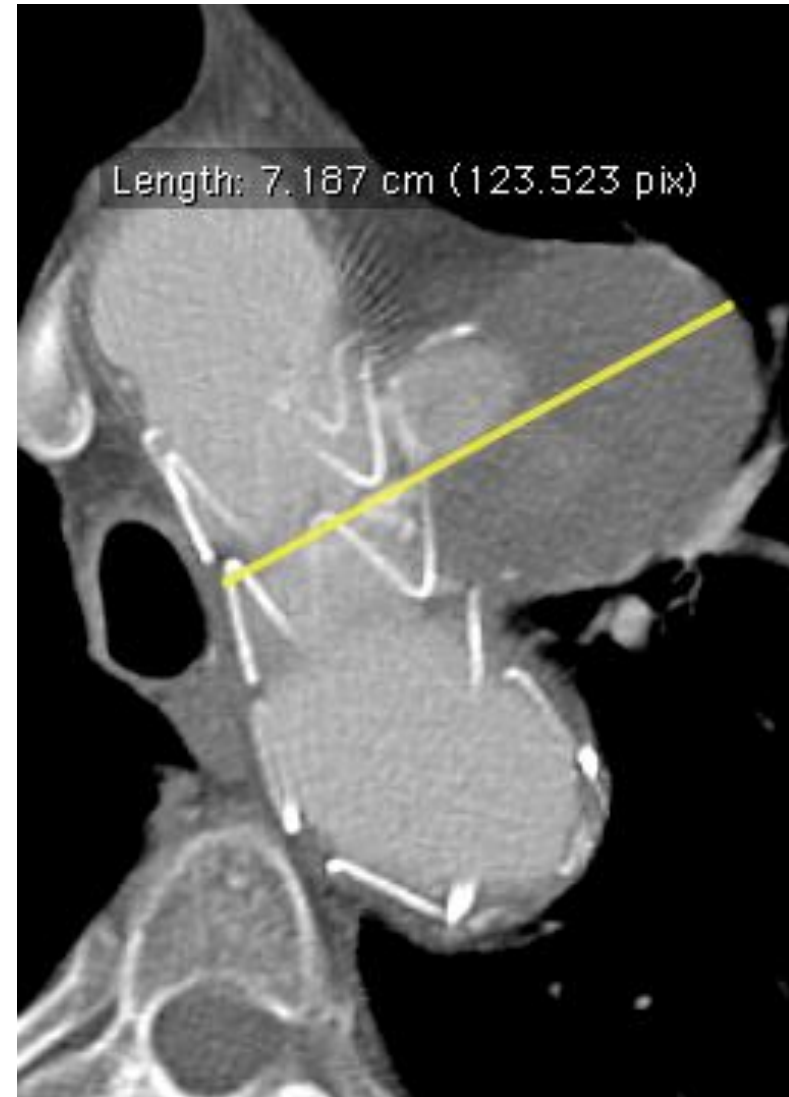




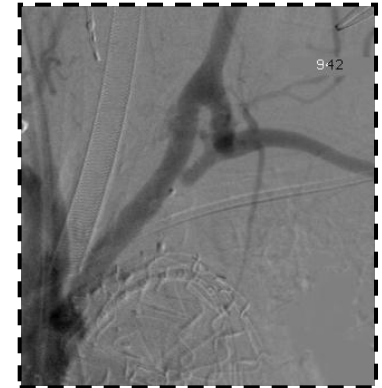
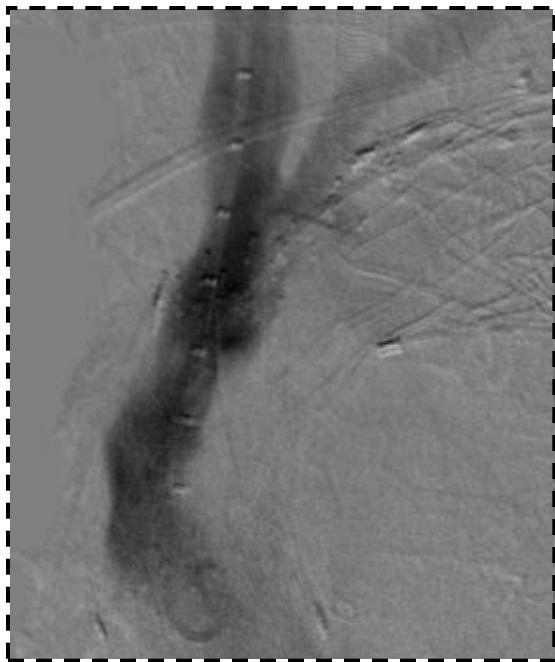


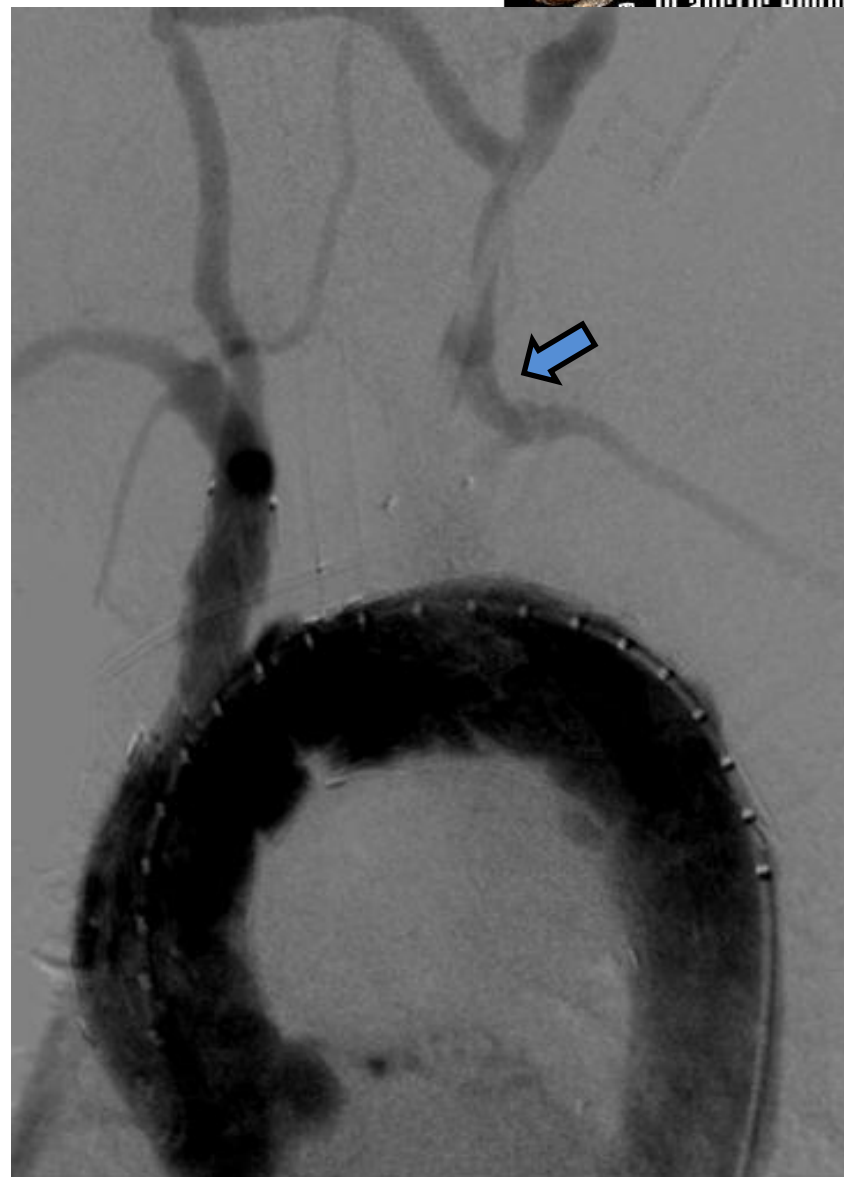
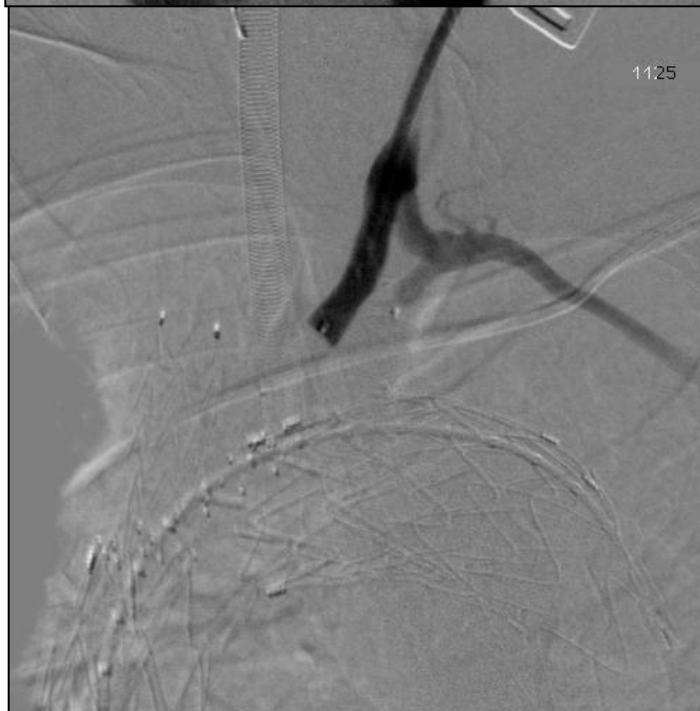
Case 4

- 70 year old woman
- Arch TAA
- s/p TEVAR, type Ia endoleak



Courtesy of Dr. Campanini





Future Directions

- Double-branch (innominate, L CCA)
- Optimized mating stent graft
- Delivery system improvement
 - Lower profile
 - Improved markers
 - Improved conformance
 - Nosecone modification

