

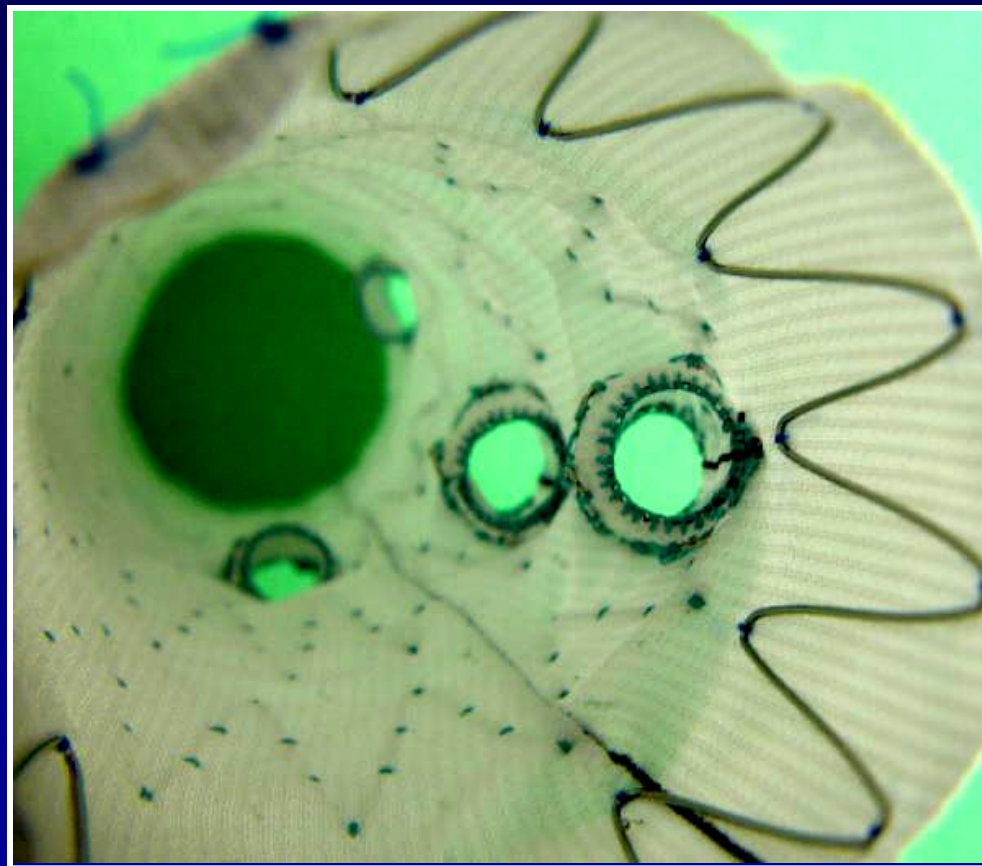
Off-The-Shelf Branched Endograft: **Patient Selection and Sizing**

Tim Chuter, D.M.
UCSF, Vascular Surgery

Disclosure

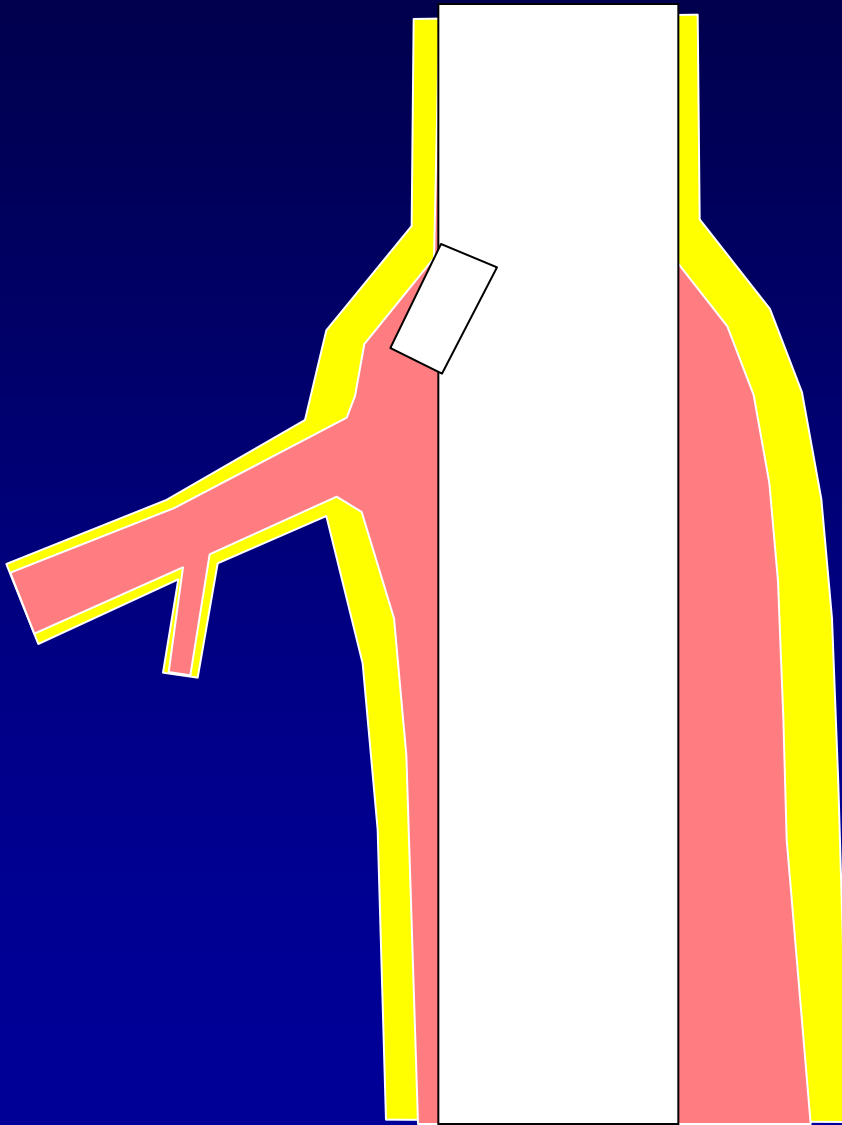
- Cook, Inc.
 - Patent licenses
 - Research support
 - Travel expenses

TAAA Branched



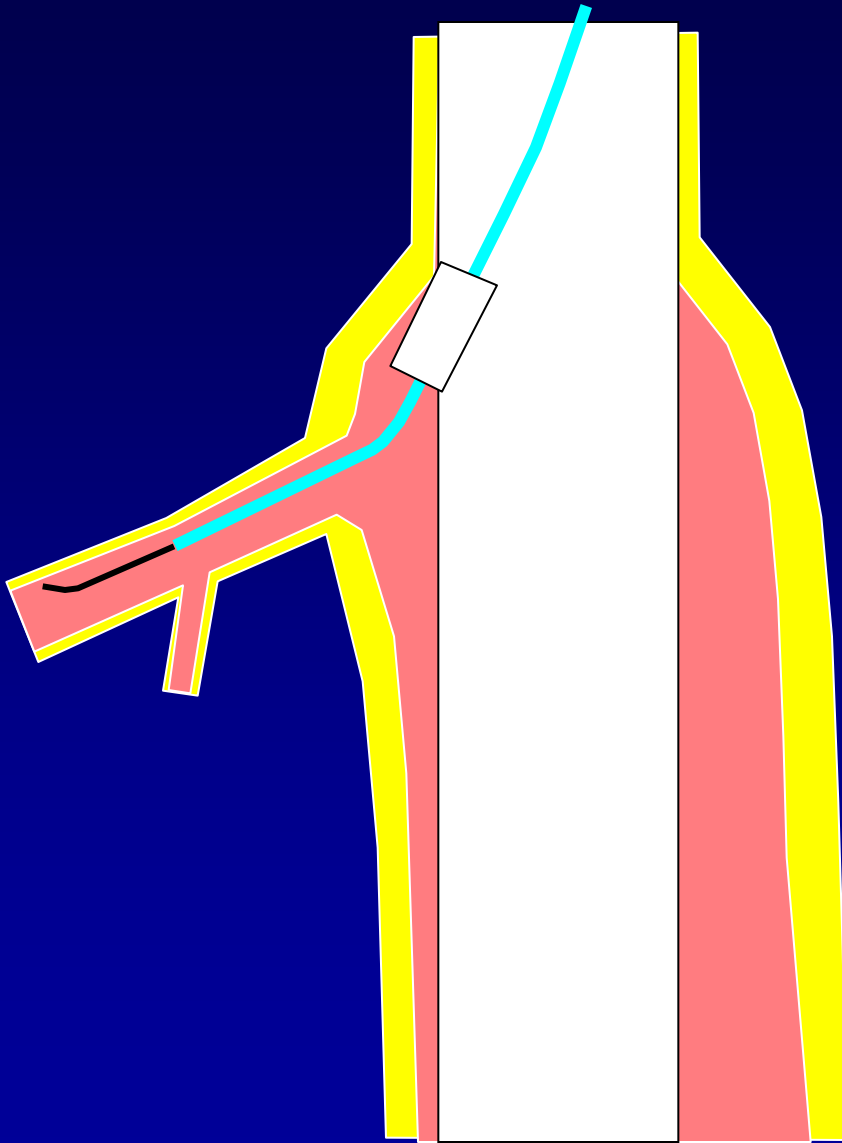
TAAA Branched

Axially-Oriented Cuffs

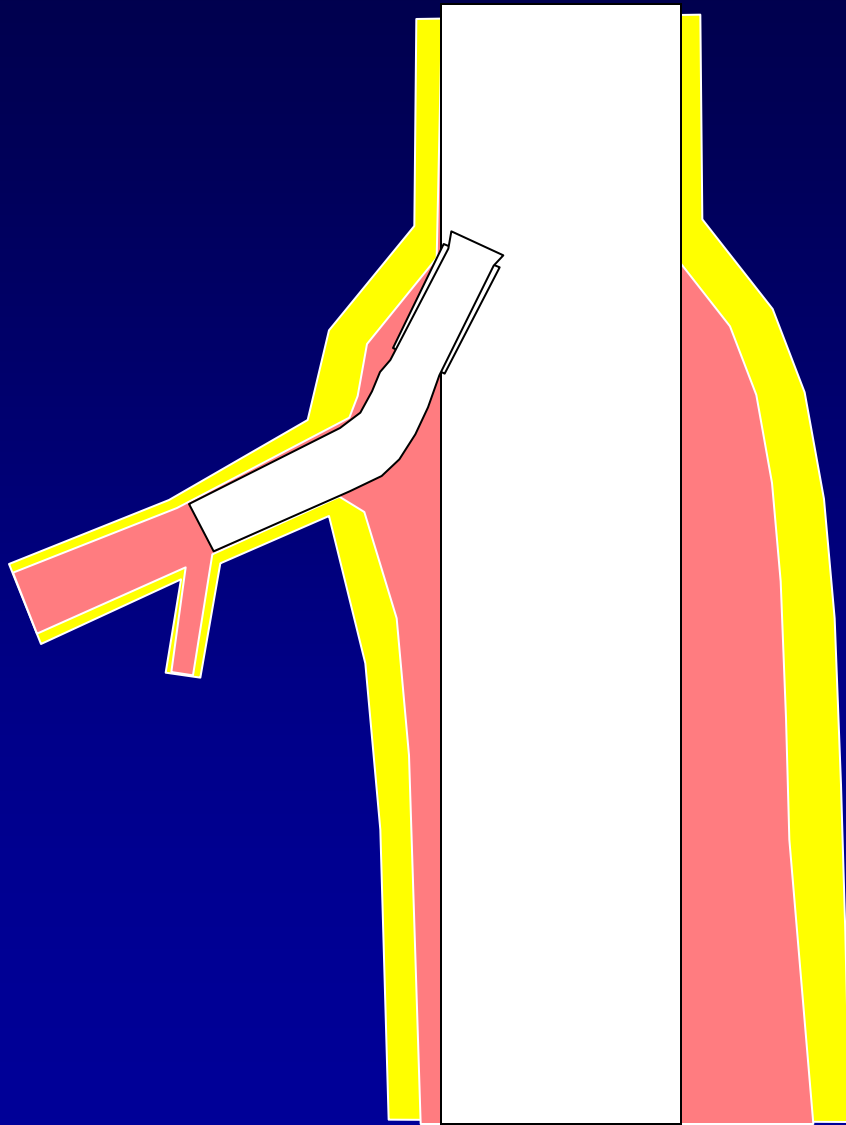


TAAA Branched

Axially-Oriented Cuffs

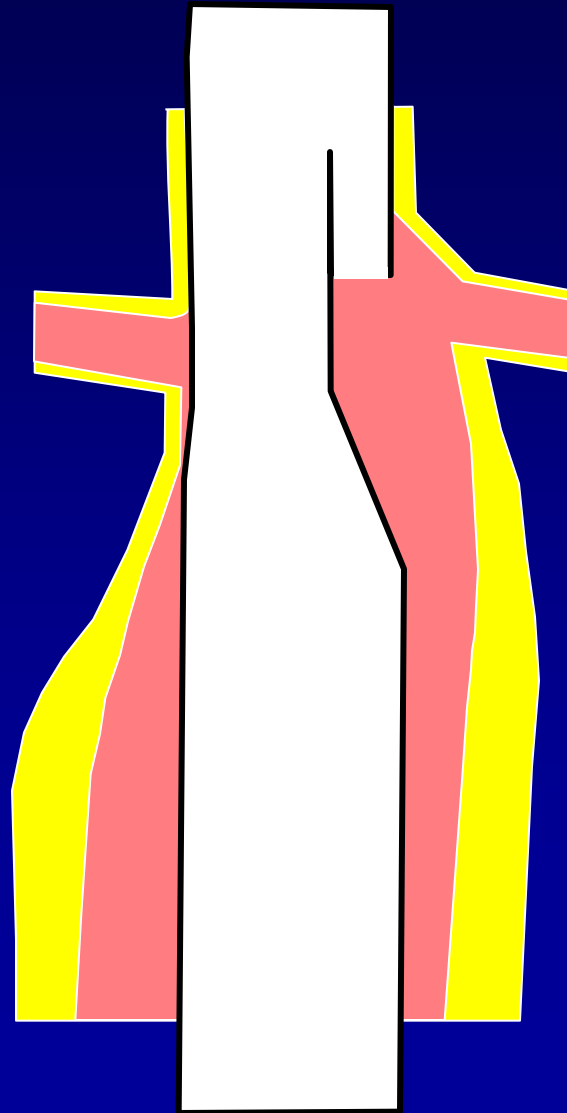
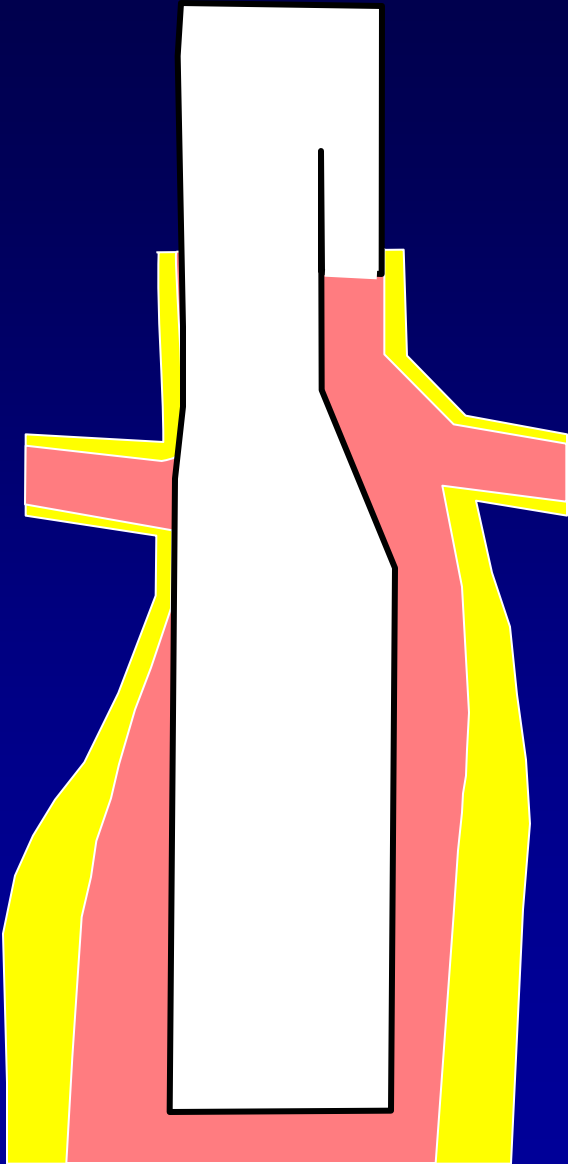


TAAA Branched

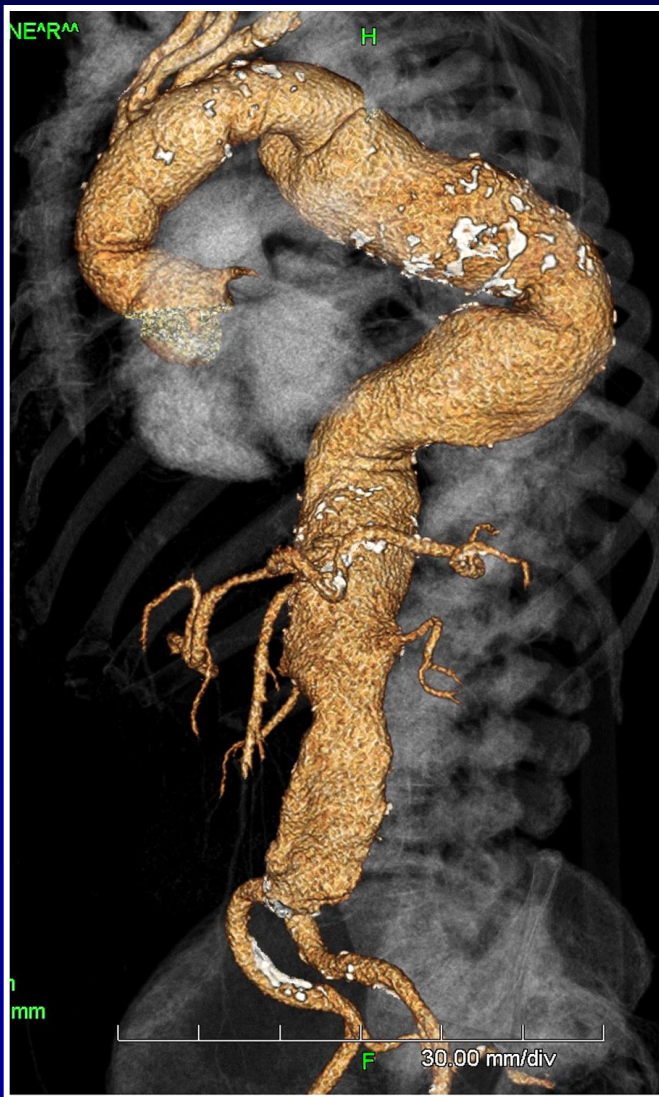


**60mm-long Fluency
Covered stents**

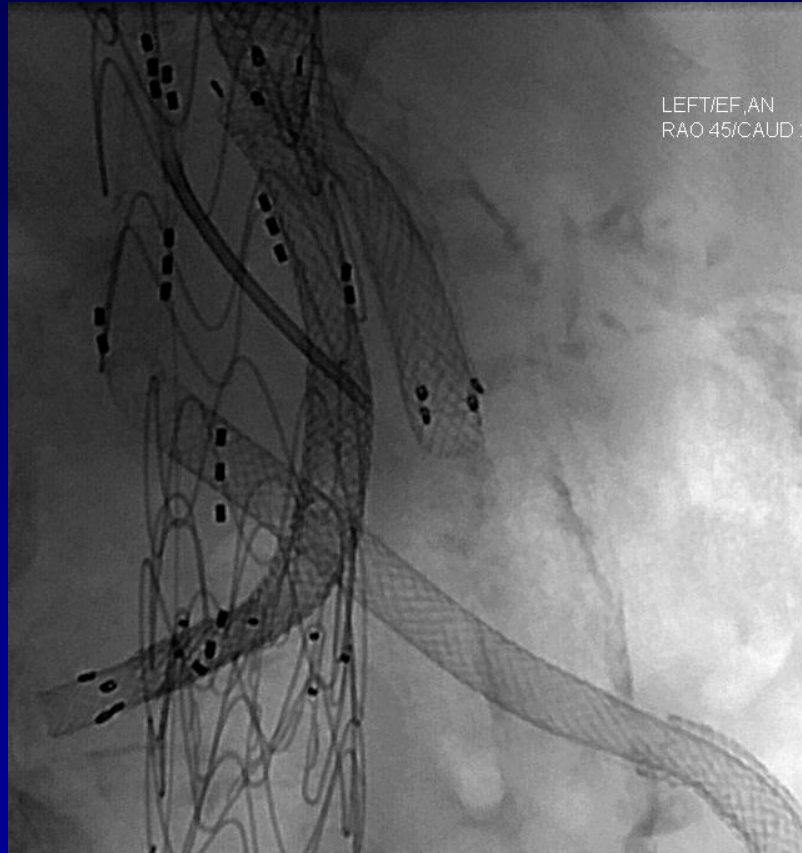
TAAA Branched



TAAA Branched



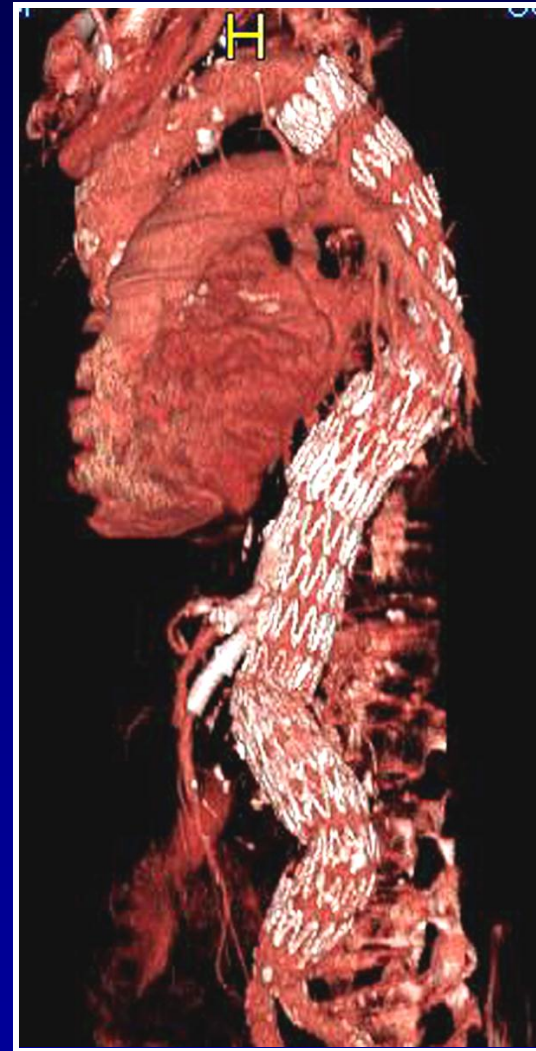
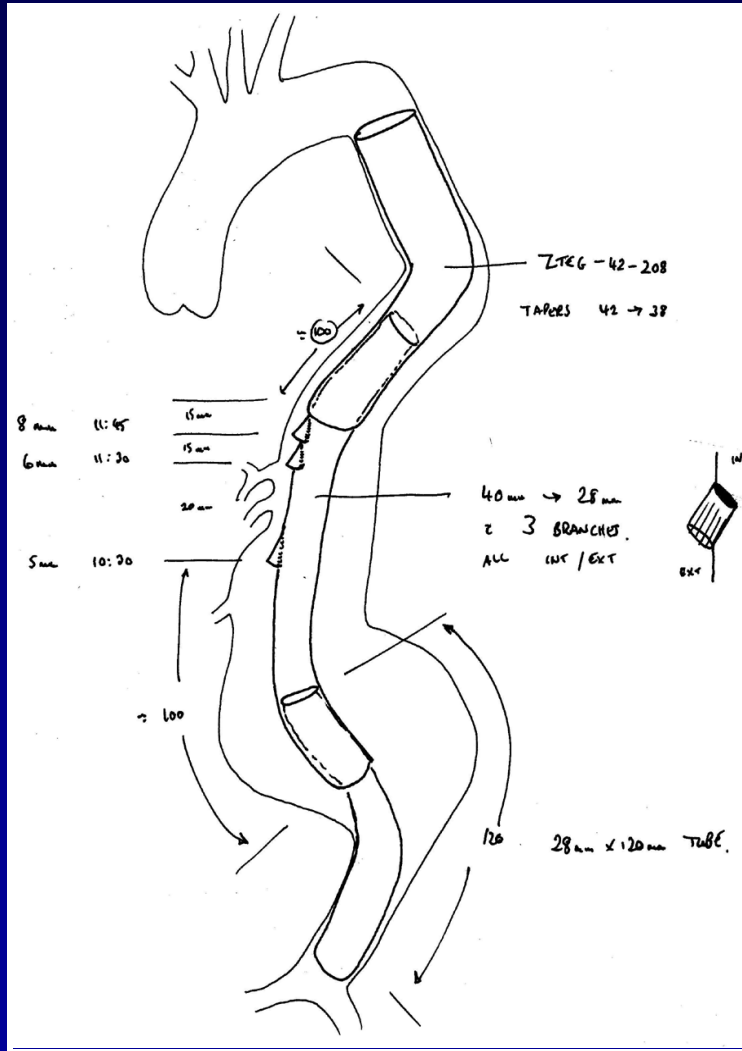
TAAA Branched



TAAA Branched



TAAA Branched



Patient Selection for Branched TEVAR

Reviewed	203
Anatomically suitable	138 (68%)
Made to be suitable	42 (21%)
Unsuitable	23 (11%)

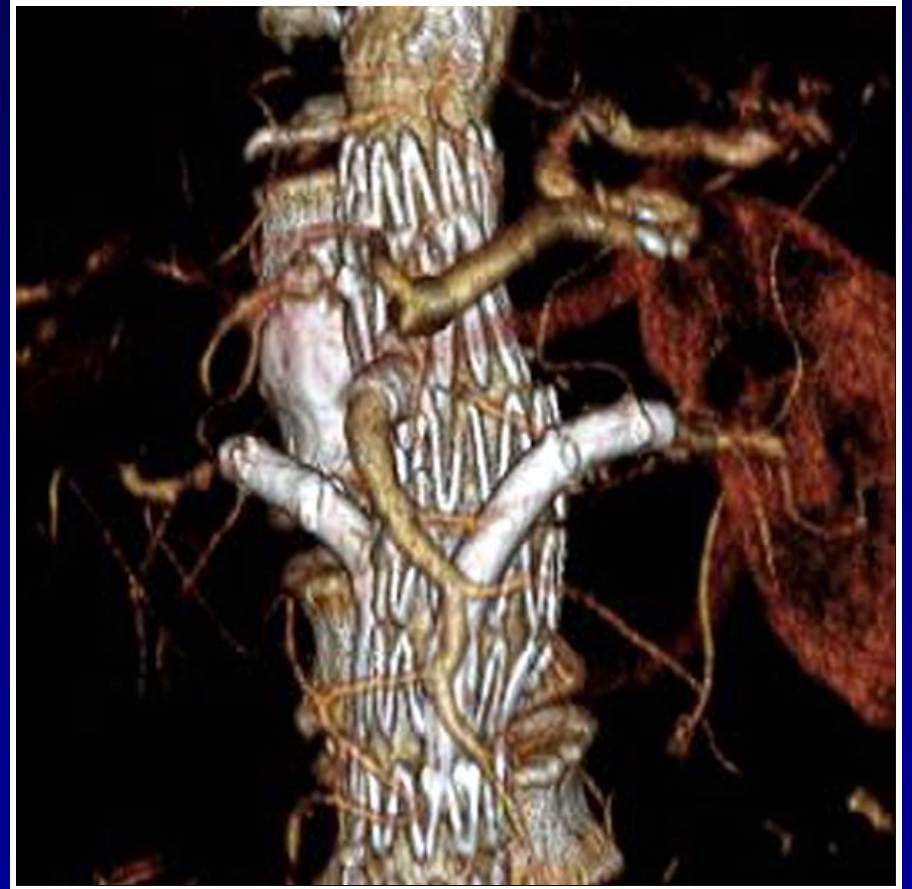
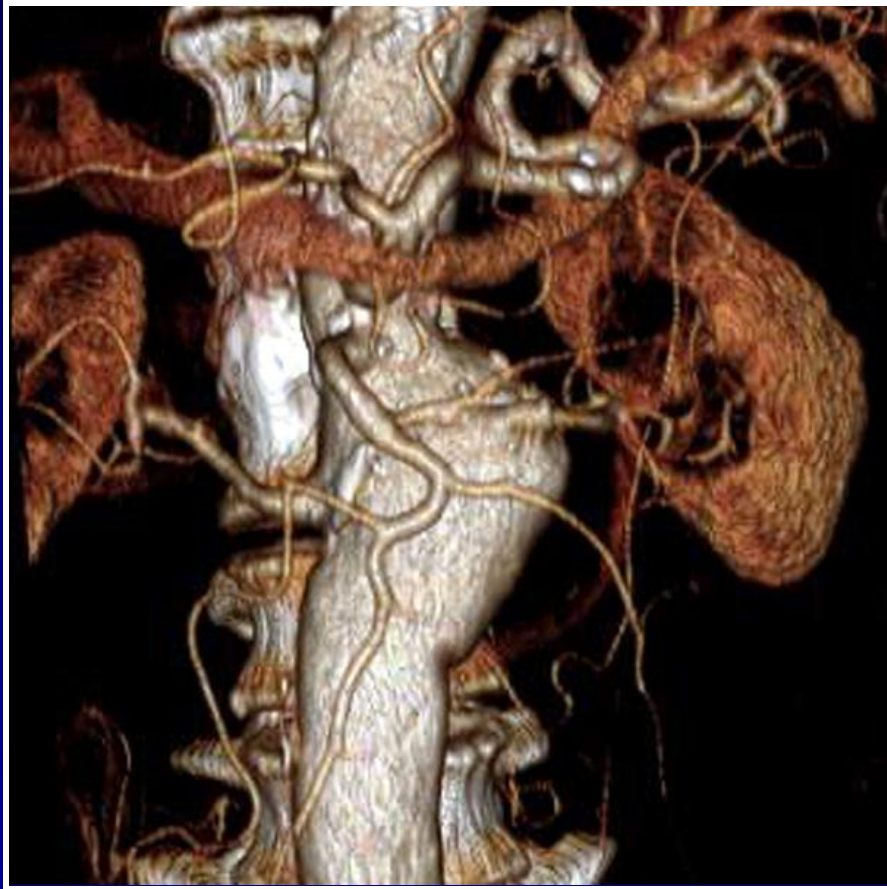
TAAA Branched



Selection for Off-The-Shelf

- Branch distribution alone
 - 49/50
- Other criteria
 - Branch orientation
 - Proximal and distal implantation sites
 - Aortic dimensions

TAAA Branched



CL

TAAA Branched



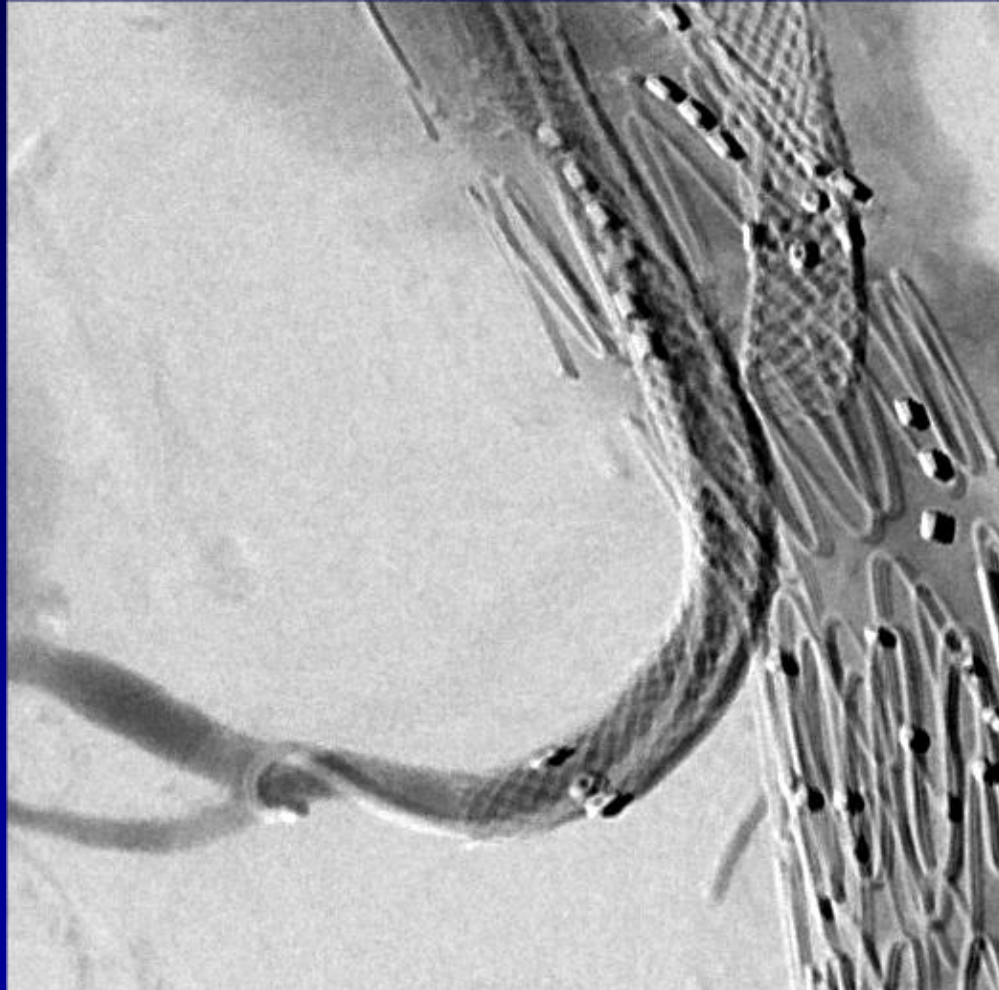
- Compression
- Angulation
- Malperfusion

TAAA Branched

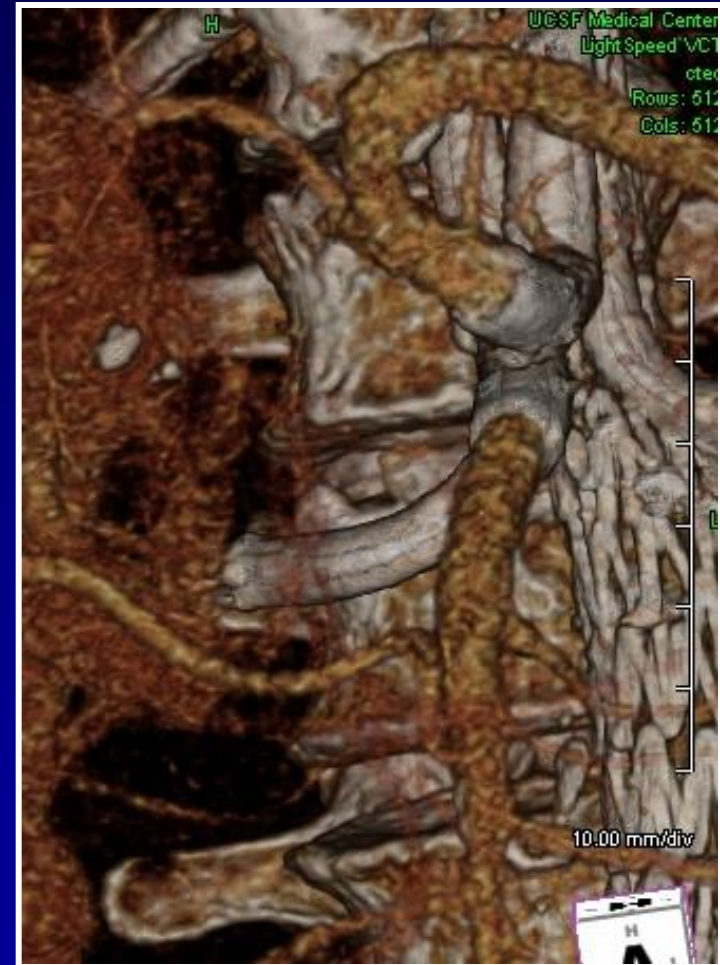
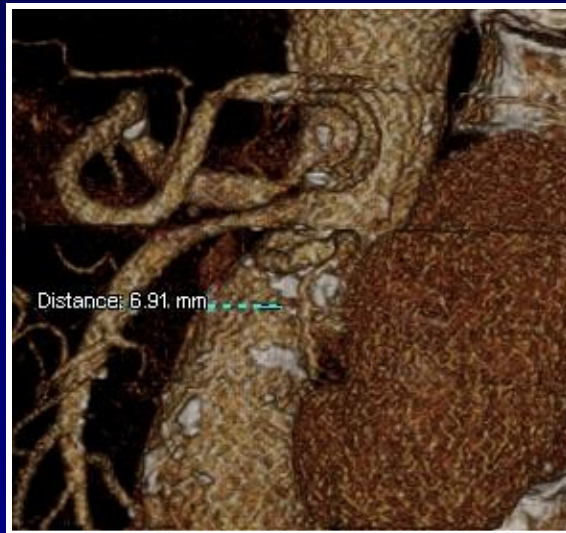
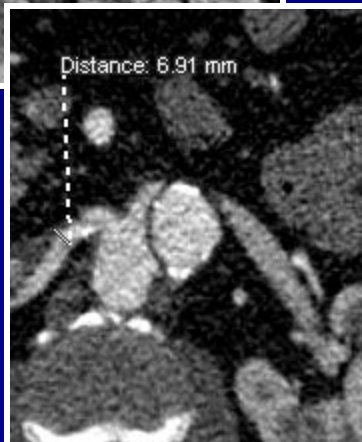
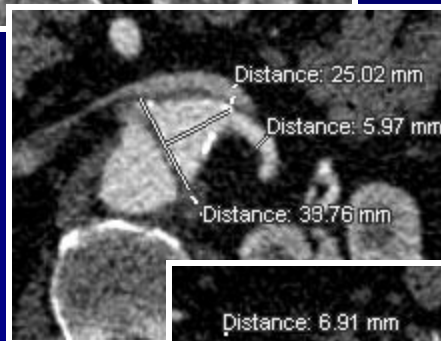
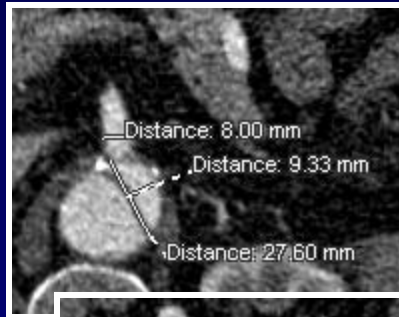


- VanSchie, JB-1 catheter
- Shuttle-select sheath
- Wallstent
- Road runner wire

TAAA Branched



TAAA Branched

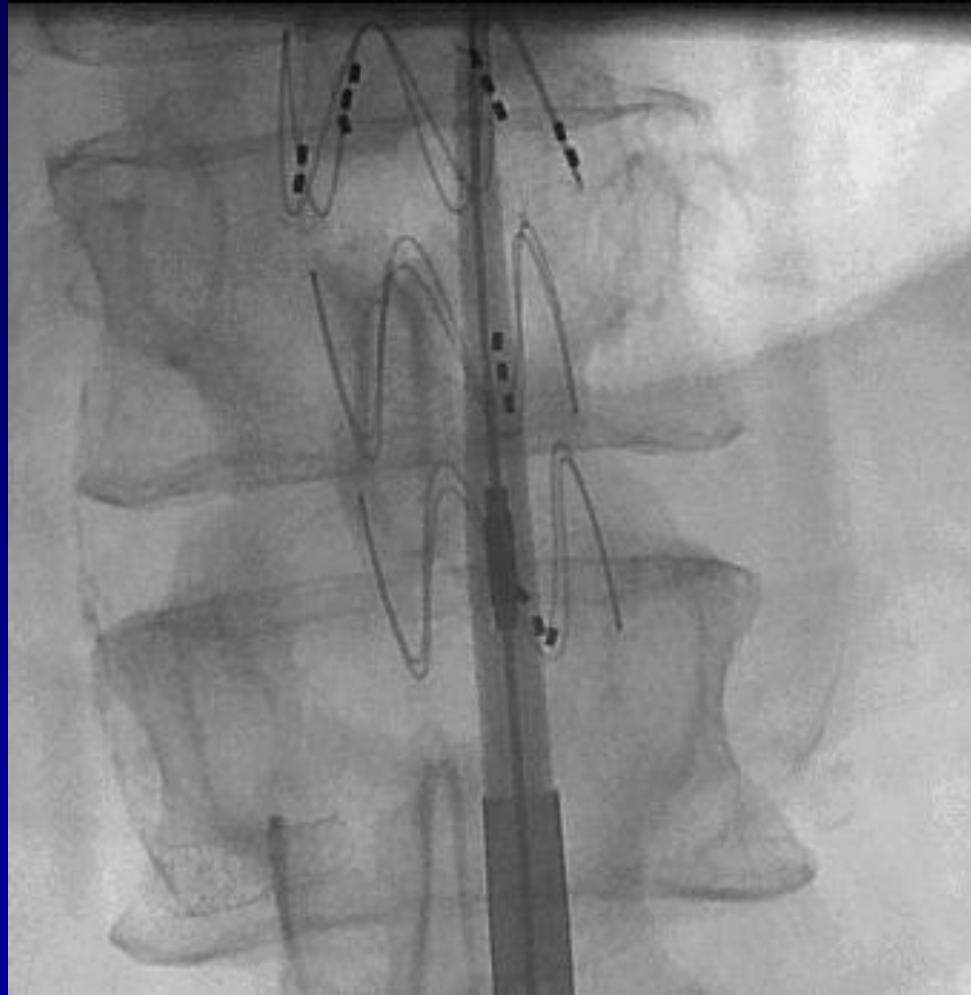


TAAA Branched



Device Evolution

TAAA Branched



Who Needs a Custom Stent Graft?

- Dissection
 - 6/6 custom made
- Pararenal segment < 20 mm
- Type IV with implantation site > 32 mm

Who Needs a Custom Stent Graft?

- Prior AAA repair with bifurcated graft
 - Distal end of main component too long
- Occluded celiac or renal artery
- Widely separated branches (type II TAAA)
 - Celiac-to-renal > 60 mm

Advantages of Off-The-Shelf

- No delay
- Standardized insertion
- Standardized manufacture
- Preclinical testing
- Regulatory approval