

Perspectives 2017
Bordeaux

ILIAC SANDWICH / AAA

Claude MIALHE



CENTRE CARDIO-THORACIQUE DE MONACO

Iliac challenges

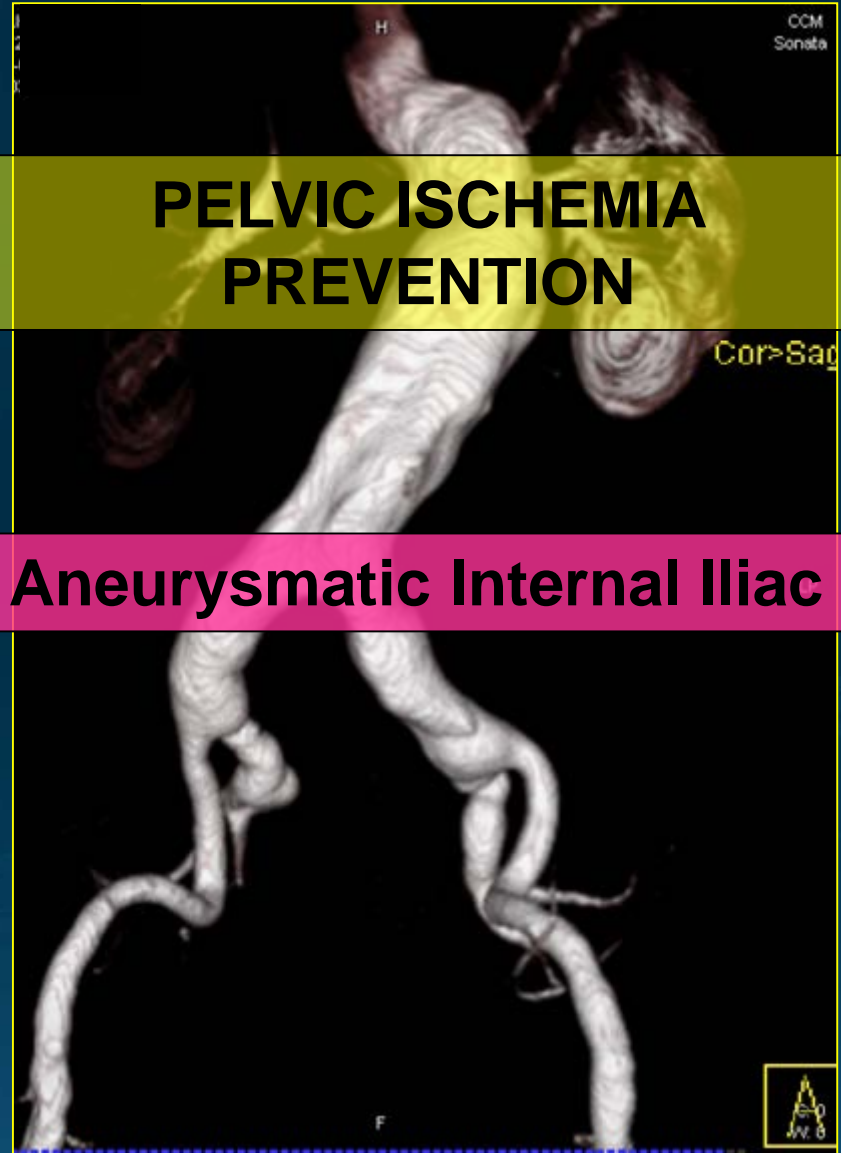
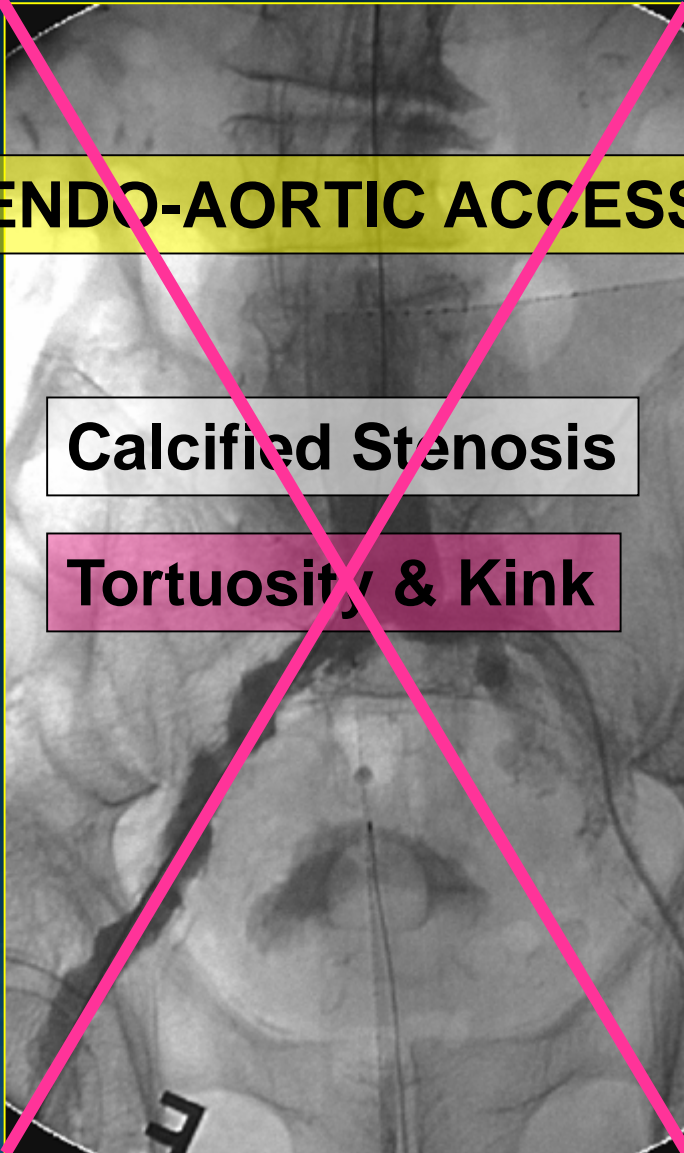
ENDO-AORTIC ACCESS

Calcified Stenosis

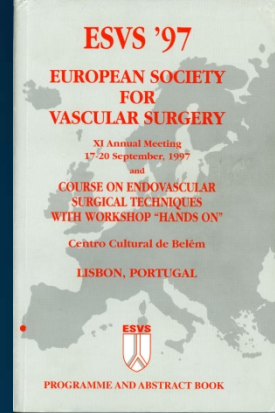
Tortuosity & Kink

**PELVIC ISCHEMIA
PREVENTION**

Aneurysmatic Internal Iliac

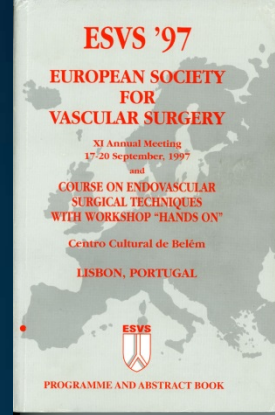


Iliac Nightmares



- **Access difficulty** is a predicting factor of Death :
(no:5% / yes:30%) $p=0.002$
- **Associated procedures** is a predicting factor of Death :
(no:4.7% / yes:60%) $p=0.001$

Iliac Nightmares



- **Calcified iliac disease** is a predicting factor of Vascular Complications:

(no:5% / yes:21%)

p=0.01

- **Internal Iliac exclusion** is a predicting factor of Colic and Pelvic ischemia:

(no:1% / yes:26.5%)

p=0.006

Eurostar Figures

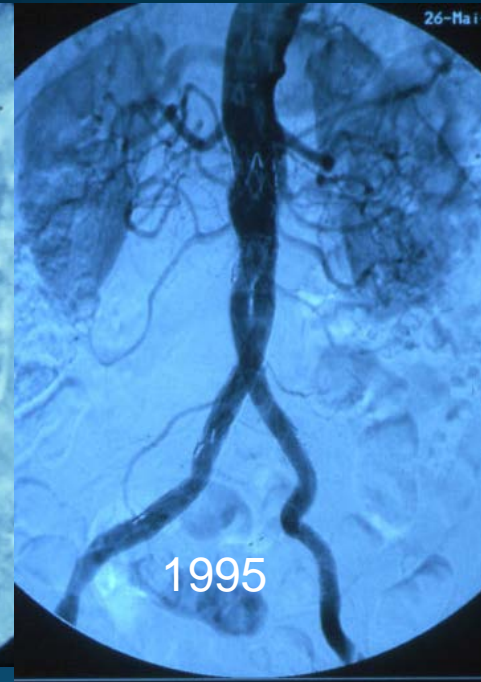
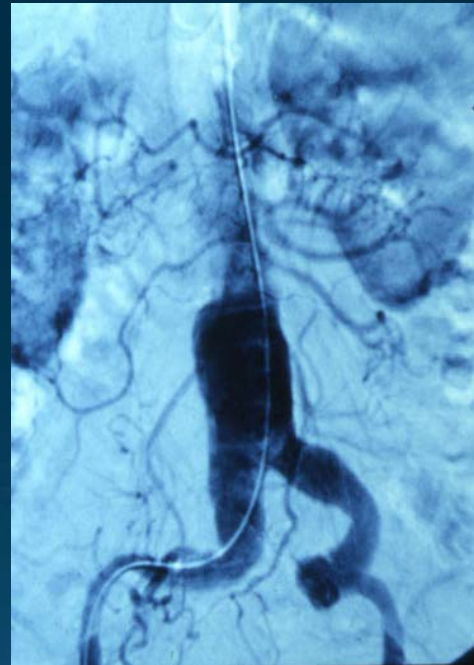
7 968 patients data



Perop. Internal Iliac blocking :

13.1%

Eurostar Progress Report, January 2006



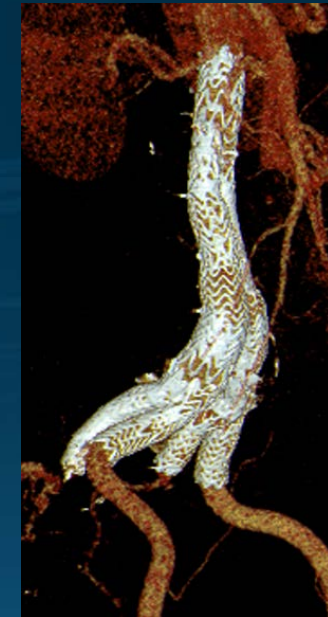
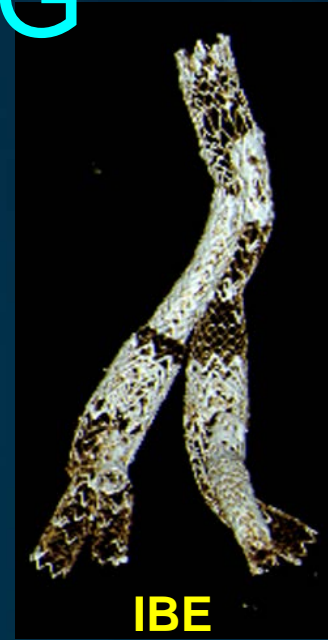
INTERNAL ILIAC NIGHTMARE



INTERNAL ILIAC SAVING



PERISCOPE



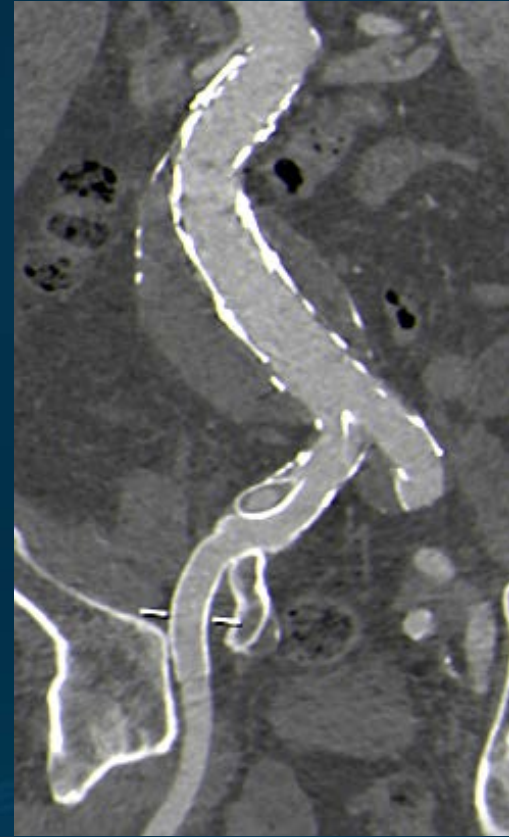
ILIAC SANDWICH SERIE

n = 23

(february 2015 – december 2017)

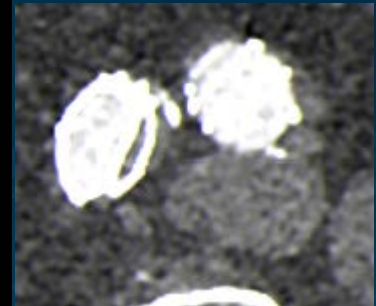
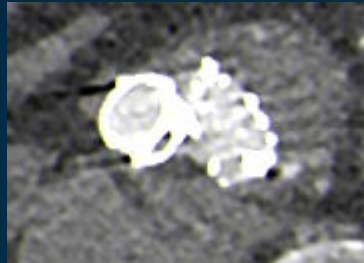
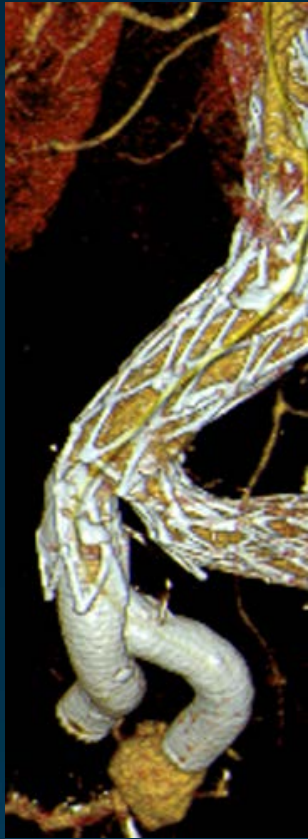
- Viabahn x2 / cross over: 4
- Viabahn x 2 / brachial app.: 3
- Viabahn BeGraft / brachial app.: 16

Viabahn x2 / cross over: 4



Cross over >>> Controlateral projection
Unclear identification of the top ends of Viabahn
Internal iliac stent occlusion: 1

Viabahn x2 / brachial App.: 3



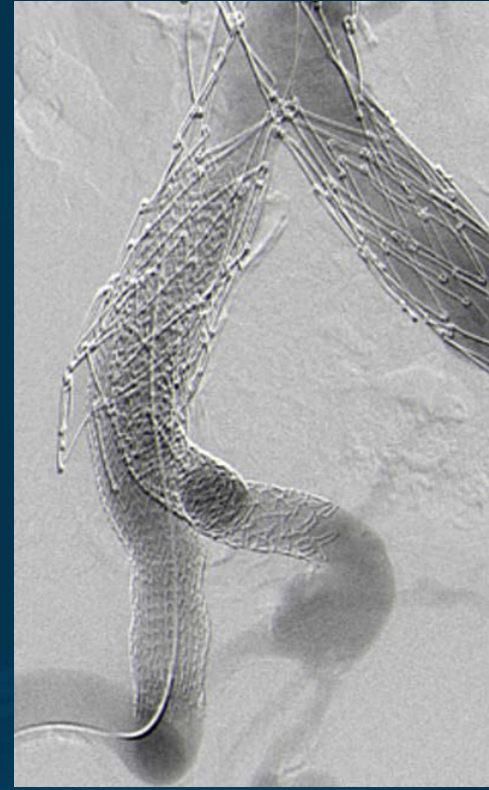
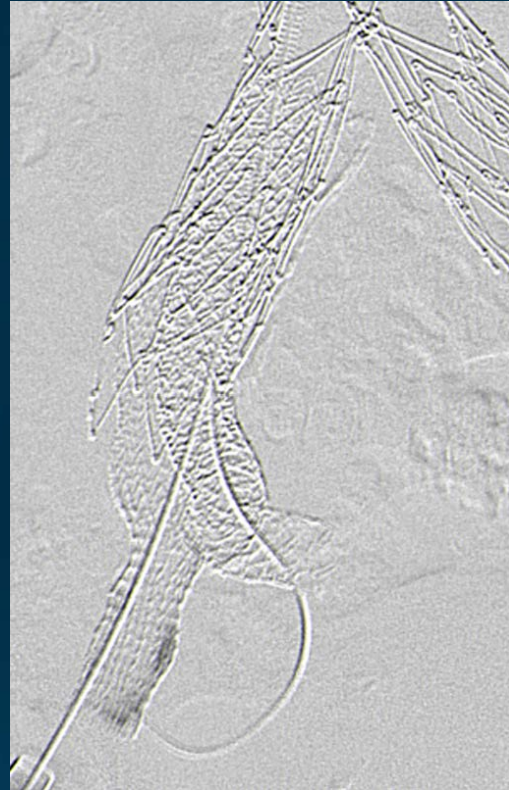
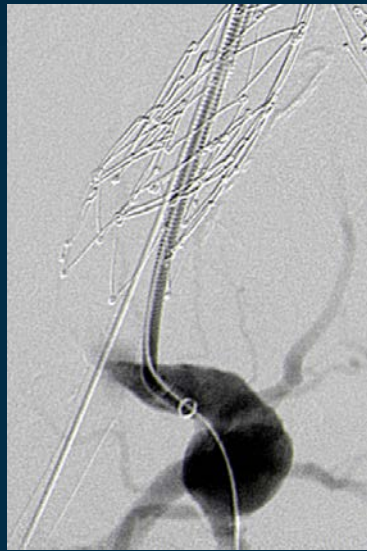
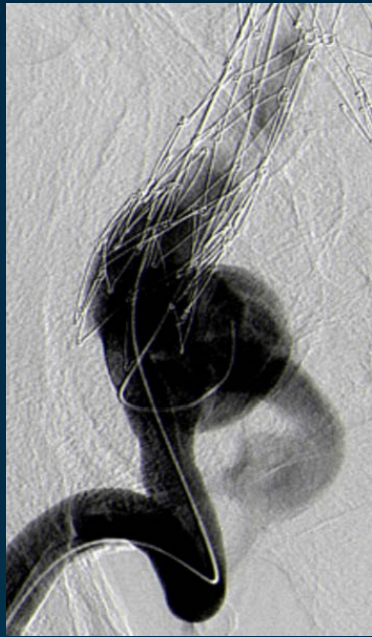
Brachial >>>Center line projection

Unclear identification of the top ends of Viabahn

External iliac stent occlusion: 1

Internal iliac stent occlusion: 2

Viabahn / BeGraft:



BeGraft Brachial App. >>>Center line projection

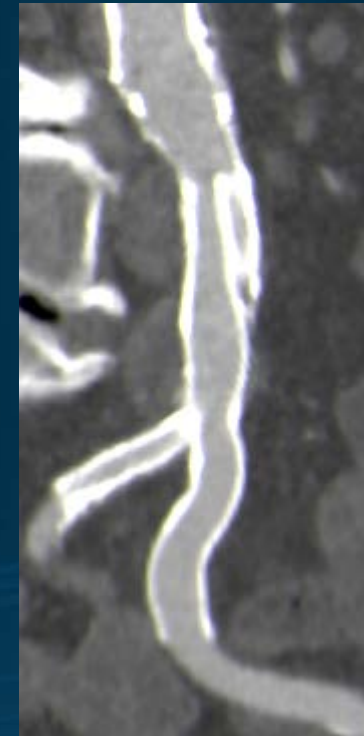
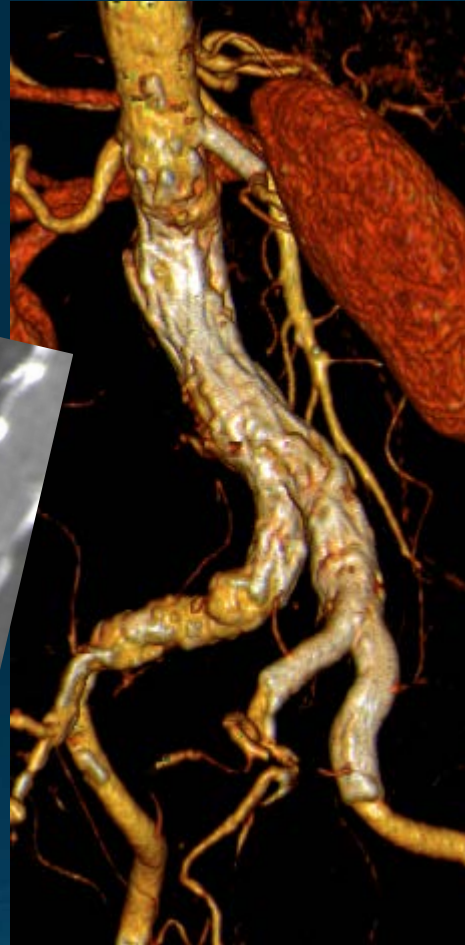
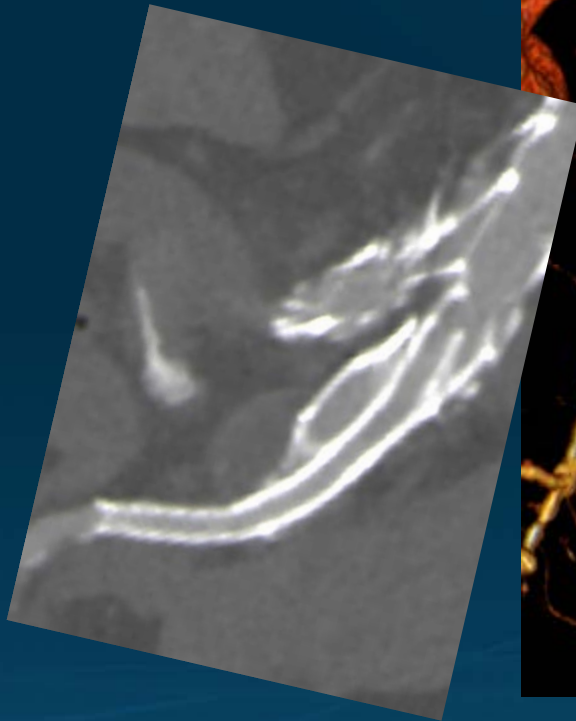
Viabahn Femoral Retrograde App.

Clear identification of the top ends of Viabahn and Be Graft

Patency rate

Viabahn / BeGraft:

16



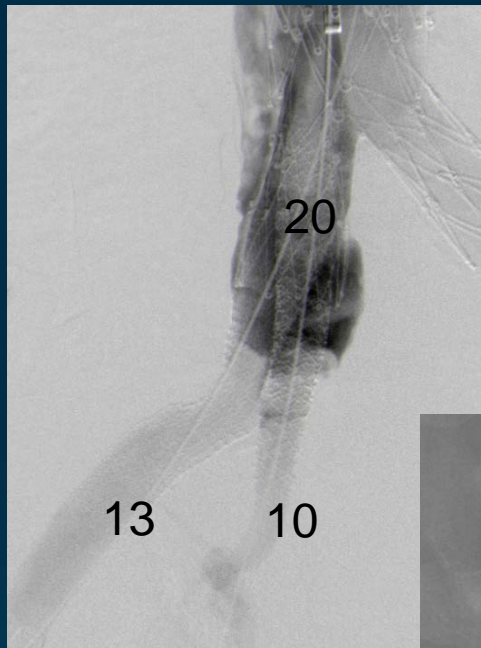
External iliac stent occlusion:
Internal iliac stent occlusion:

0
0

Leak issue

Viabahn / BeGraft:

16

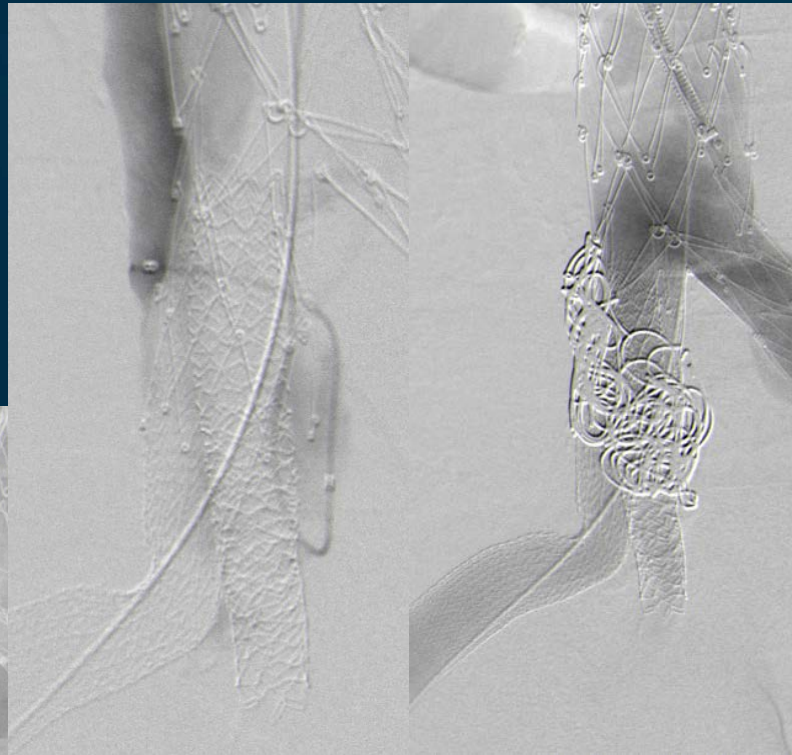


Oversizing = 15%



Sandwich leak:

2



Oversizing = 6%



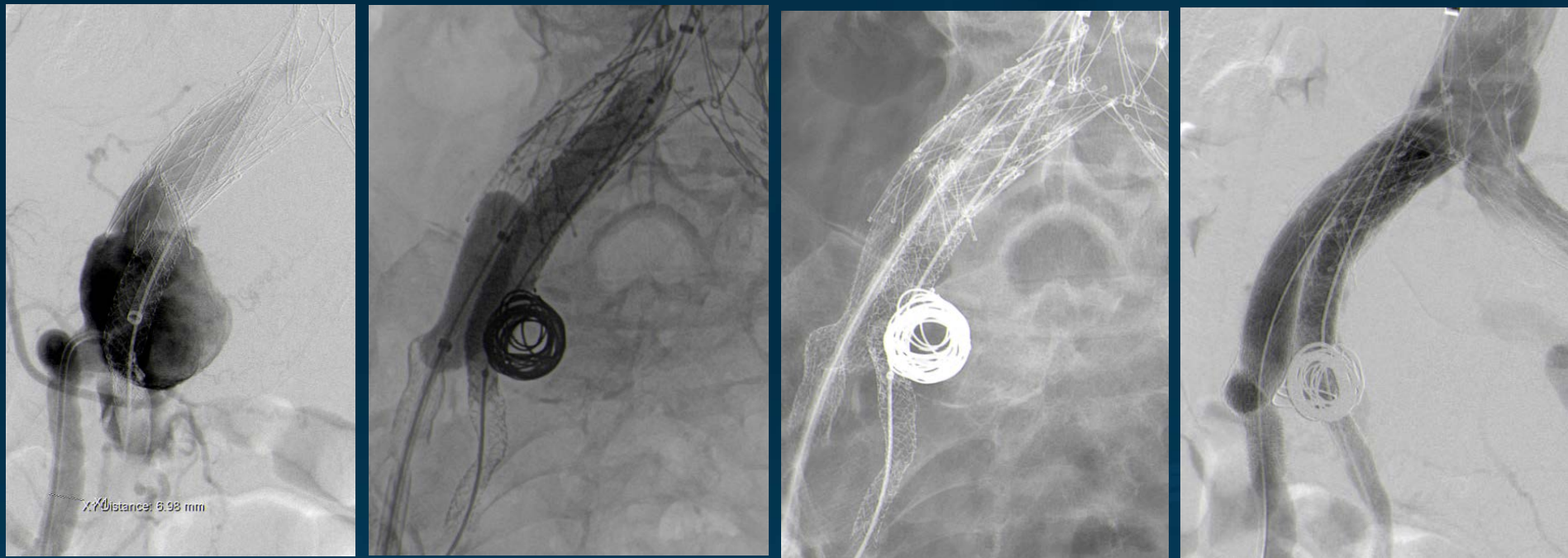
Oversizing Ratio

N°	EAG	Iliac limb diameter (mm)	Internal iliac stent (mm)	C/E Iliac stent (mm)	Sandwich oversizing (mm)	Δ (%)
1	AFX	16	8	13	5	31
2	AFX2	16	7	13	4	25
3	AFX2	16	6	11	1	6
4	Endurant	16	6	11	1	6
5	AFX	20	10	13	3	15
6	AFX	16	7	13	4	25
7	Endurant	13	10	13	10	23
8	Endurant	13	10	13	10	23
9	AFX	16	7	11	2	13
10	AFX	16	9	11	4	25
11	AFX	20	10	13	3	15
12	AFX	20	10	13	3	15
13	Endurant	13	8	11	6	46
14	AFX	16	10	13	7	44
15	AFX	20	10	13	3	15
16	AFX2	16	10	11	5	31

moyennes	16 ± 2	9 ± 2	12 ± 1	4 ± 3	29 ± 22
-----------------	---------------	--------------	---------------	--------------	----------------

Viabahn / BeGraft:

16



BeGraft Brachial App. + Viabahn Femoral Retrograde App.
Cross over catheter prelocation for large sack embolisation

CONCLUSION

- Combined Viabhan / BeGraft: preferred option for common iliac sandwich
- Brachial approach: preferred access for Internal Iliac
- Optimal patency rate
- Leakage issue prevention