

**Don't use dangerous and traumatic
0.035" guides wires below-the-knee**



Roberto Ferraresi
Peripheral Interventional Unit

HUMANITAS
GAVAZZENI

Bergamo – Italy
www.robtoferraresi.it

Disclosure

Roberto Ferraresi, MD

I have the following potential conflicts of interest to report: consulting, travel reimbursement, teaching courses, training, proctoring:

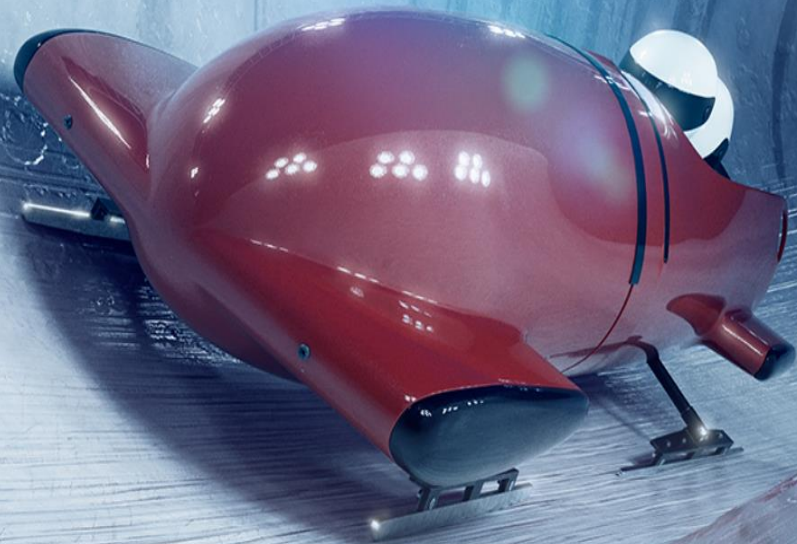
Medtronic, Boston Scientific, Abbott, LimFlow, Terumo, Cook, Biotronik, Asahi, Shire, Kardia, Orbus

Wires

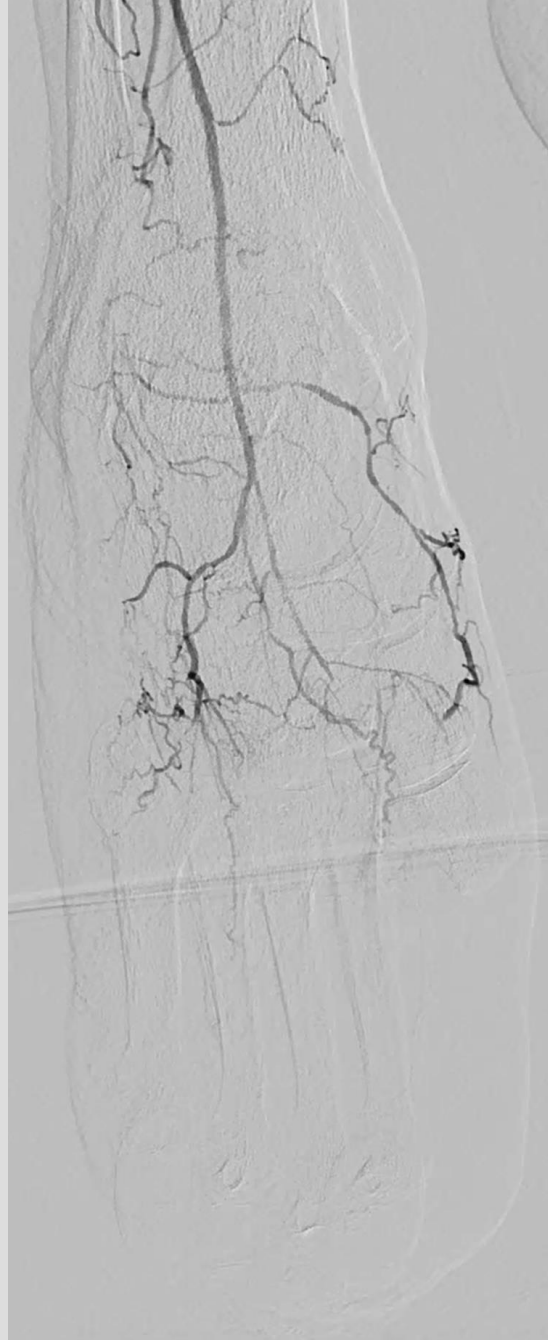
1. Sliding

2. Piercing

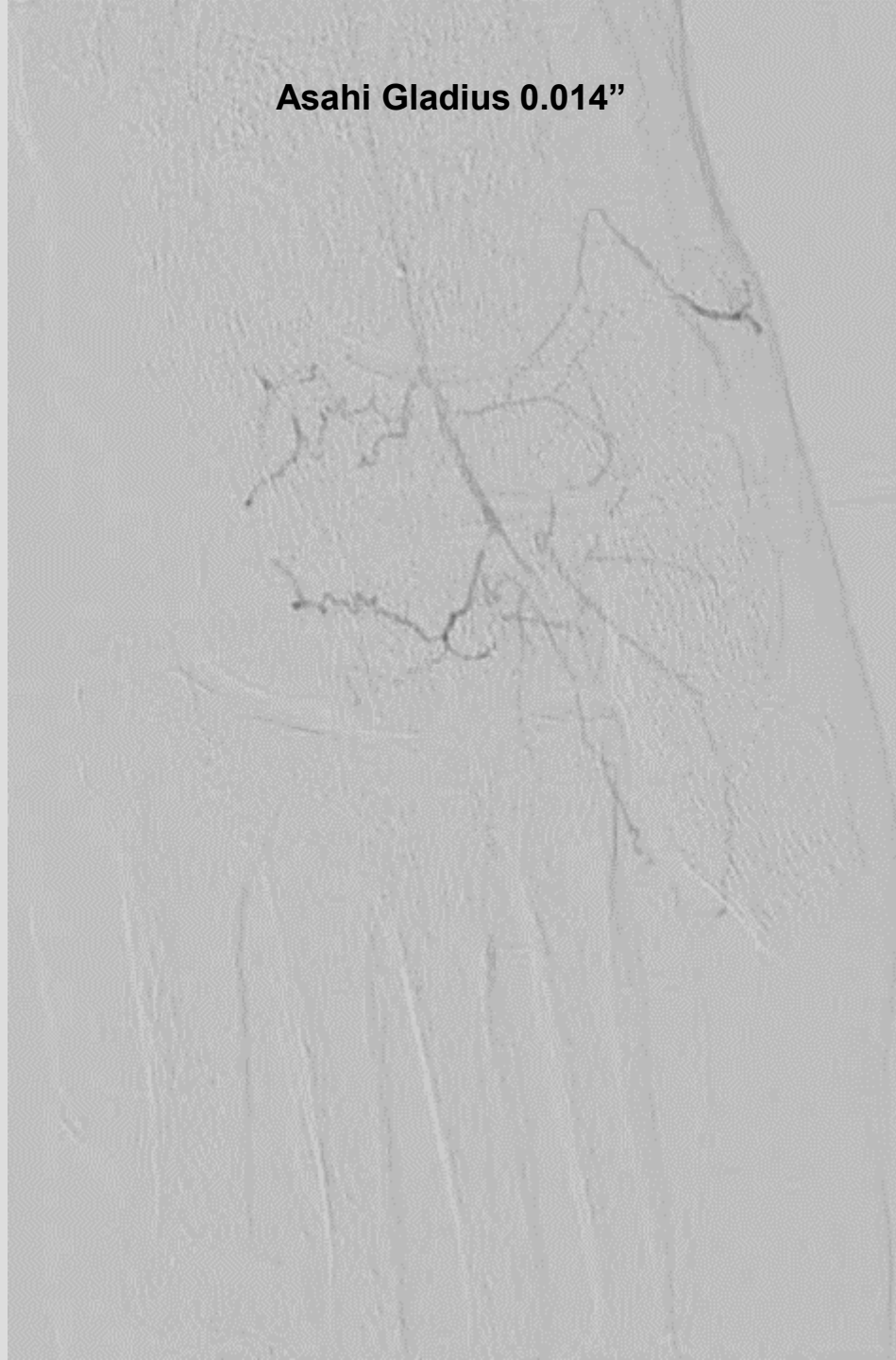
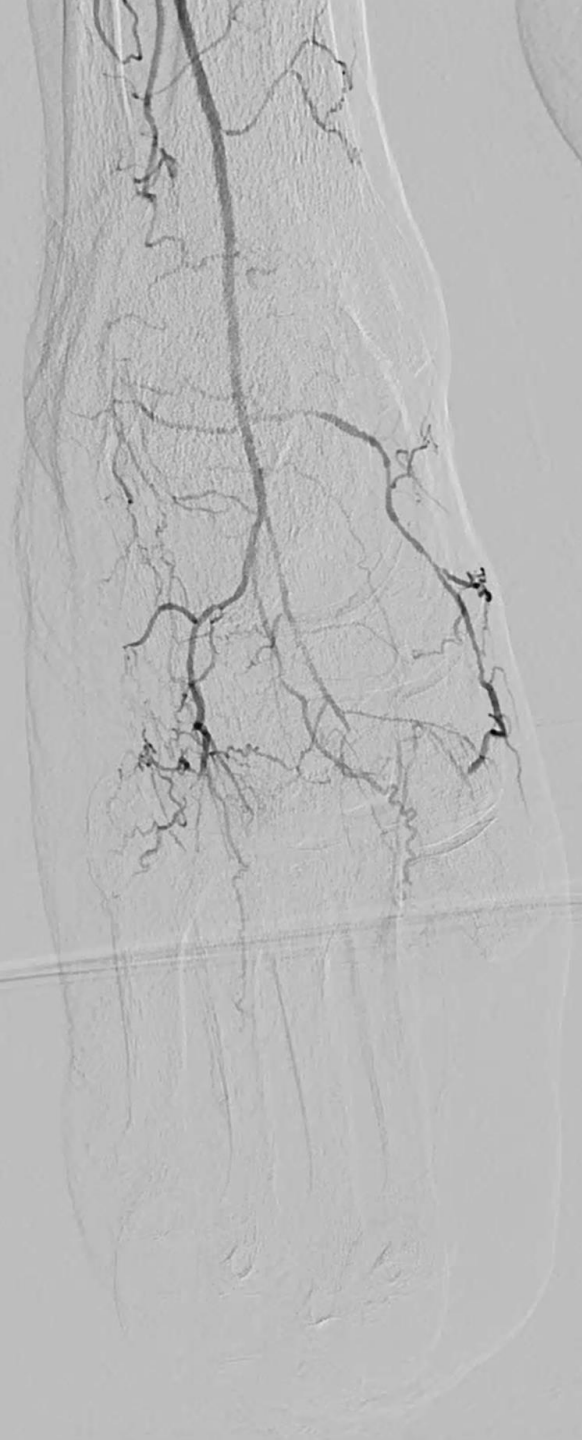
3. Dissecting



**Patient 1
Sliding**



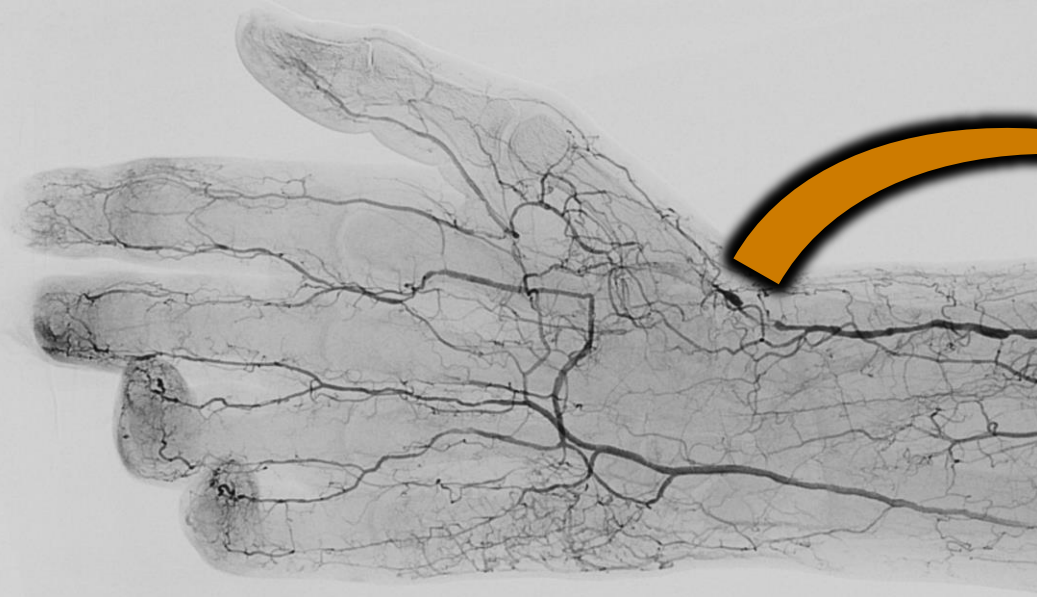
Asahi Gladius 0.014"







Patient 2
Sliding

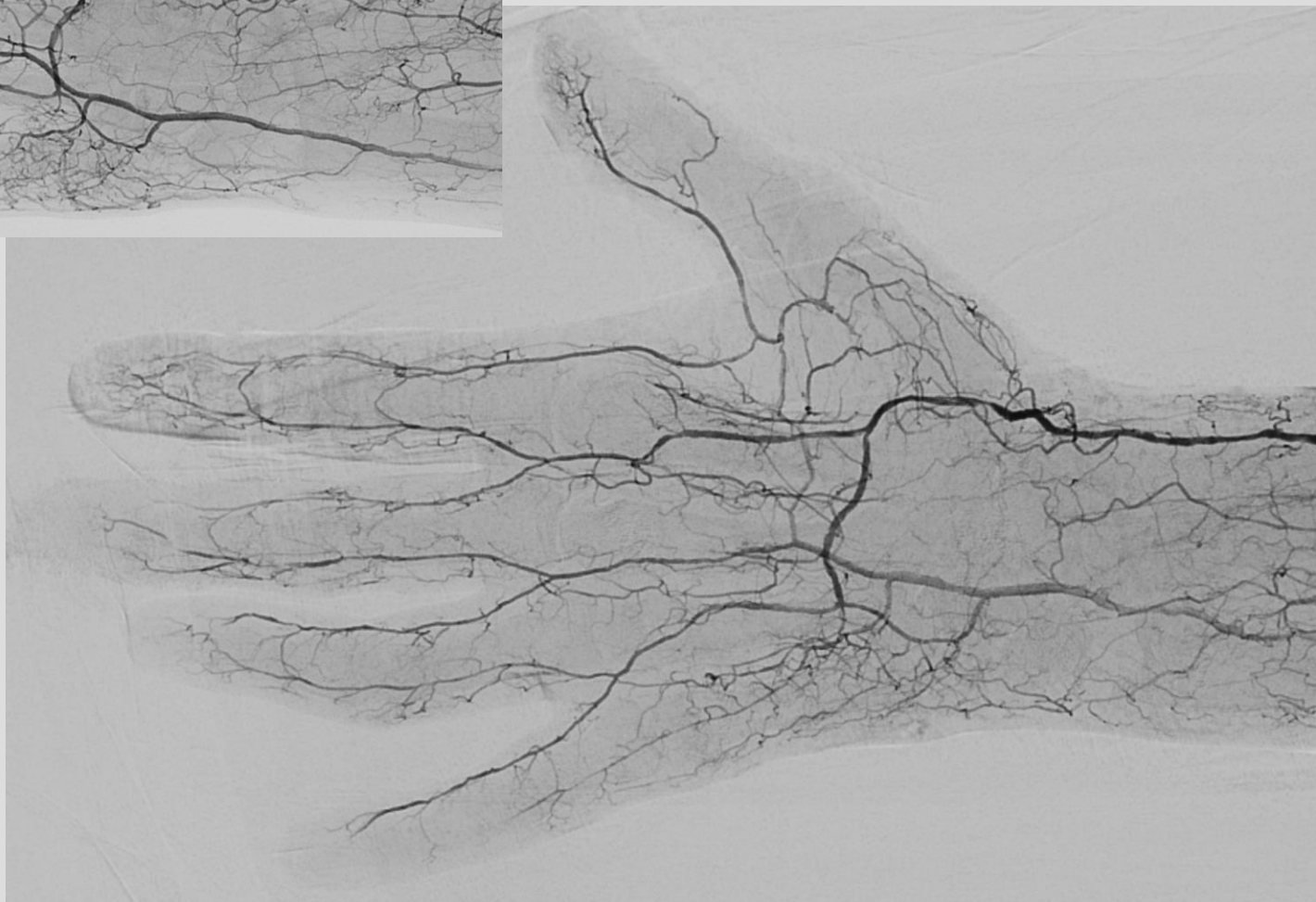
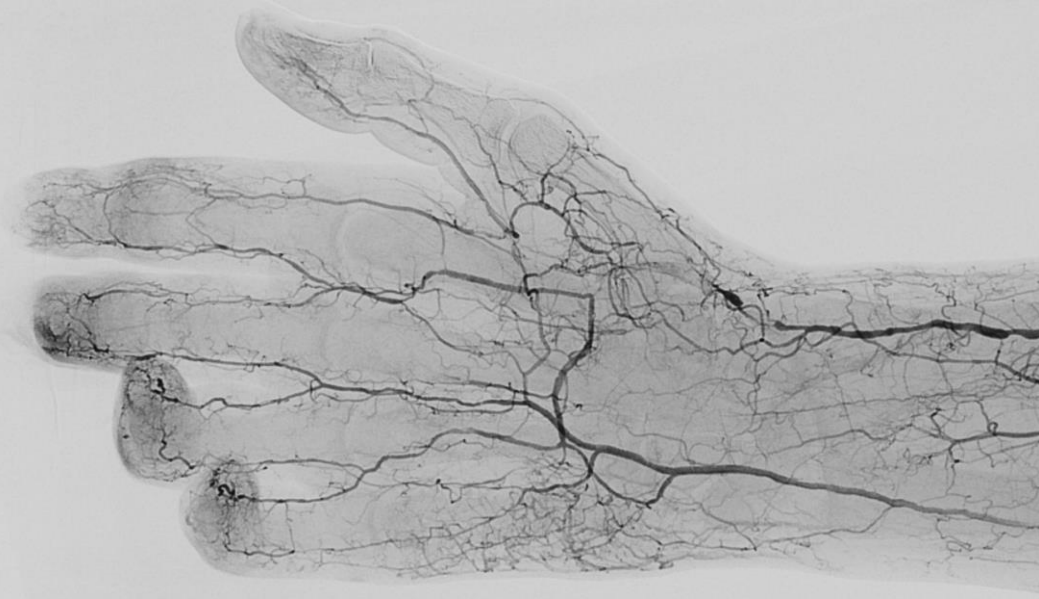


64
3/1963
2018
49 PM

1
3" / CAUD 19"

EE
DDO

WC
WW





Wires

1. Sliding

2. Piercing

3. Dissecting

**Patient 3
Piercing**



Workhorse wire: Command 0.014" Abbott



Intermediate wire: Pilot200

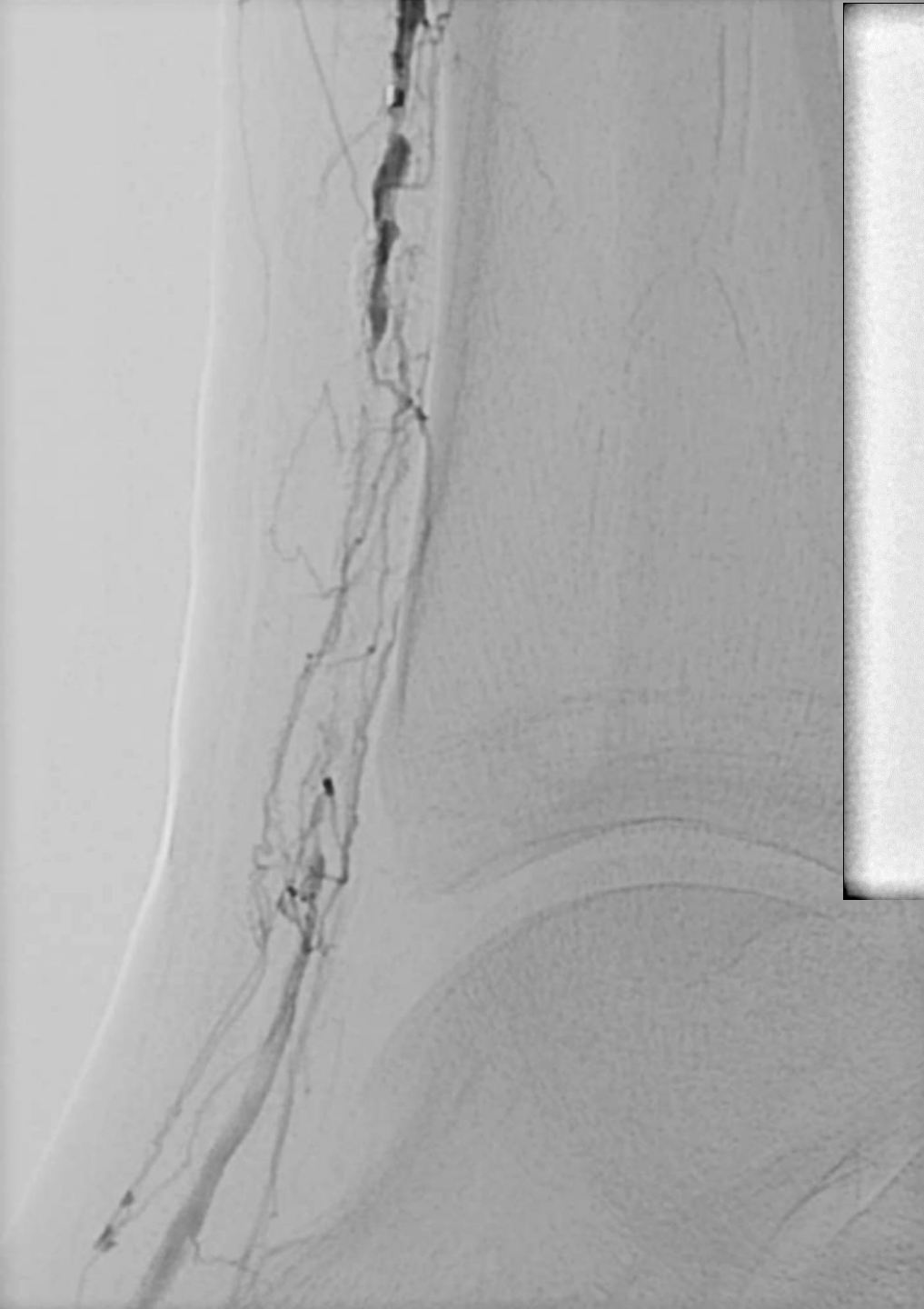


CTO wire: Halbert 0.014 Asahi

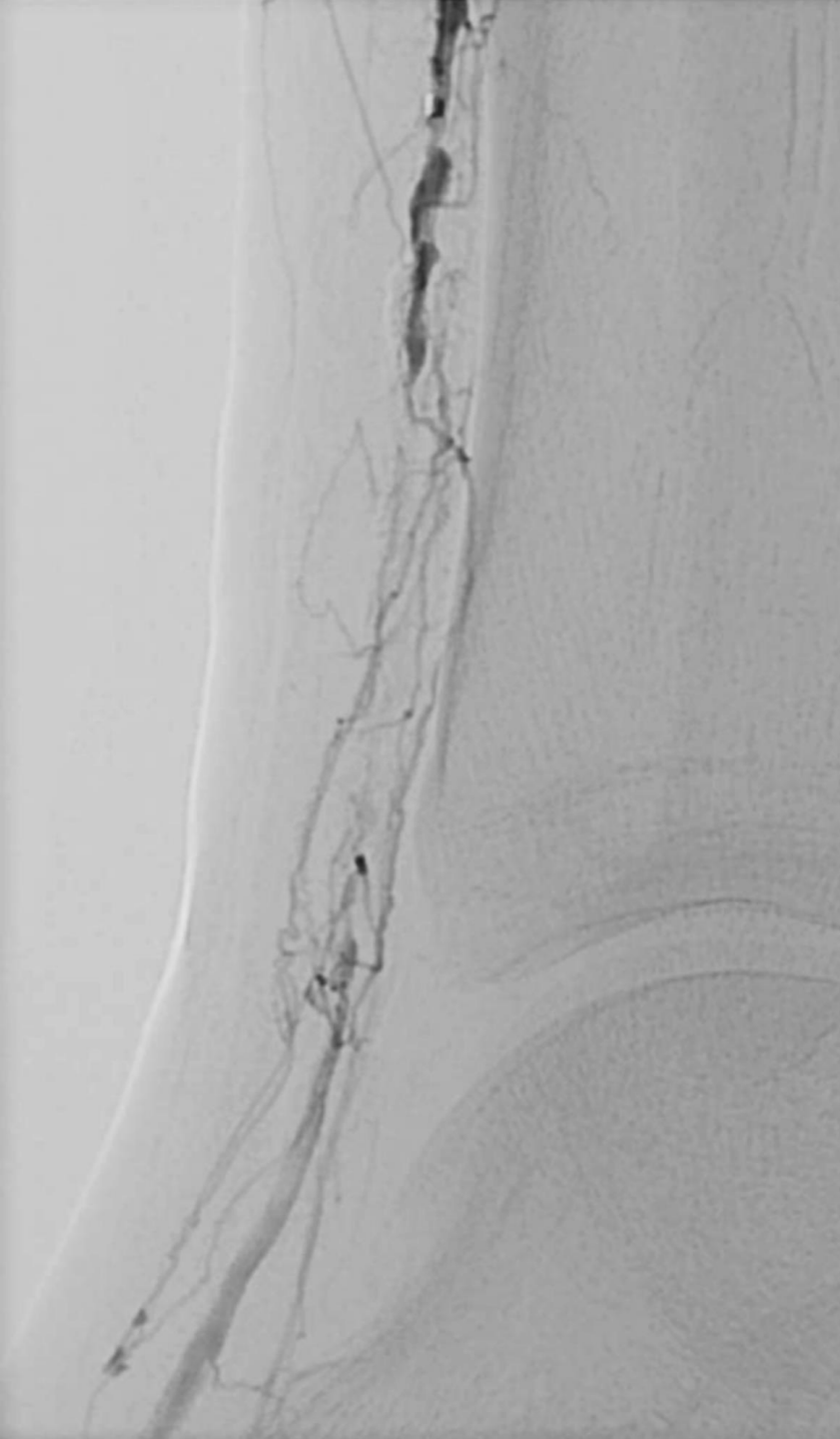


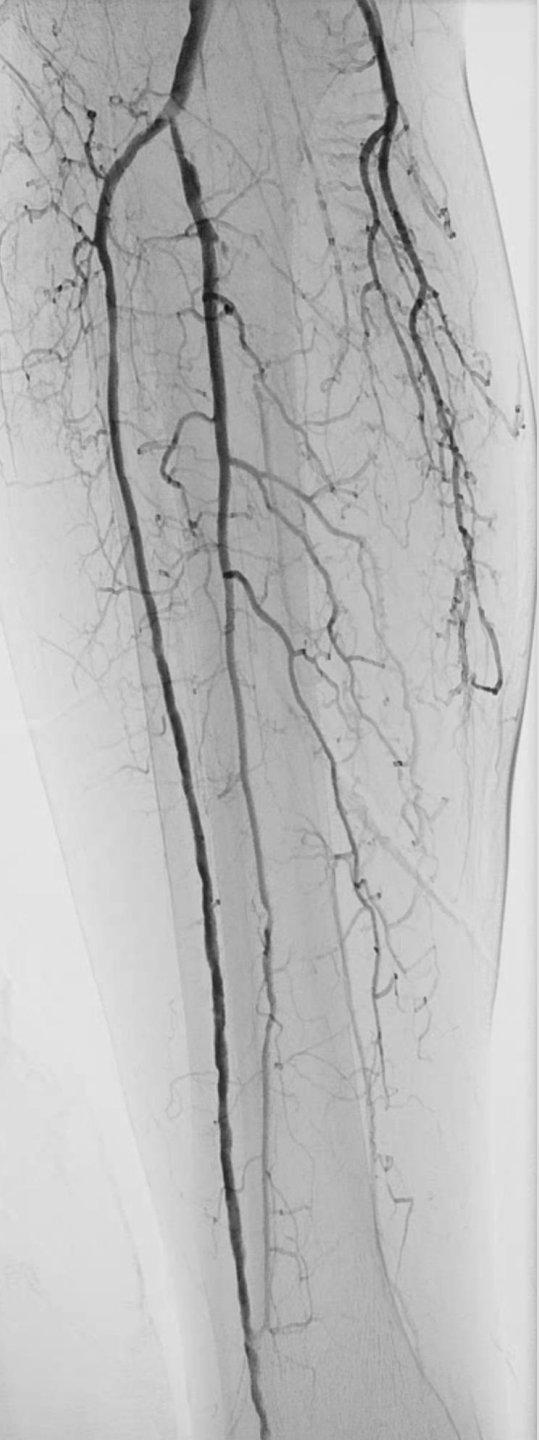
1.5x20 mm Armada XT balloon





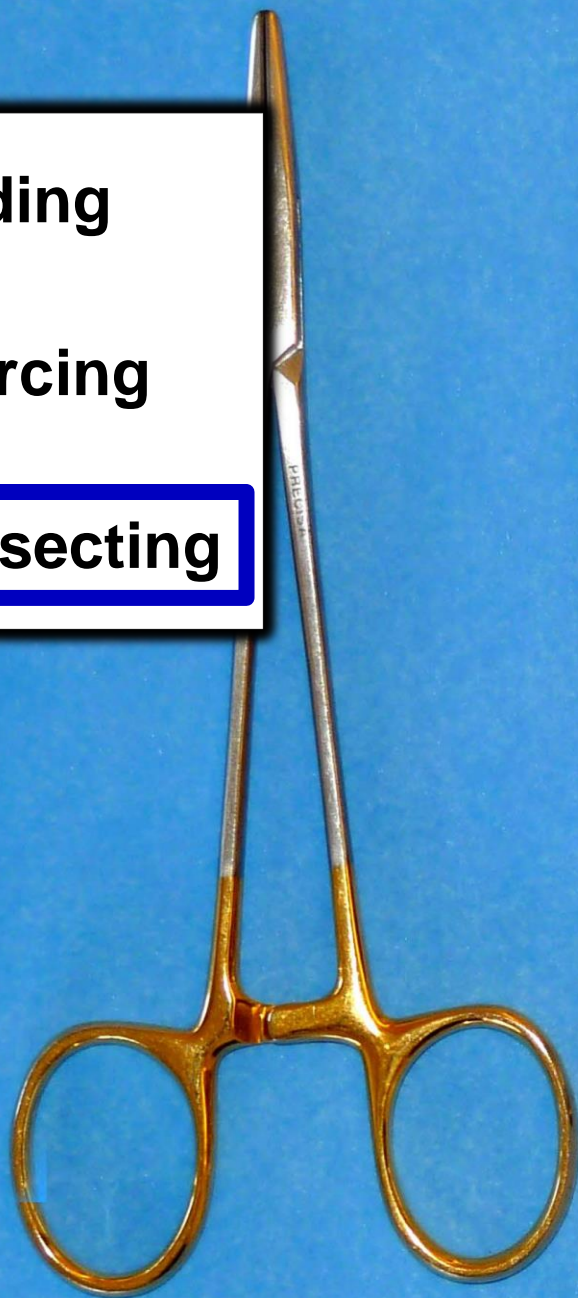
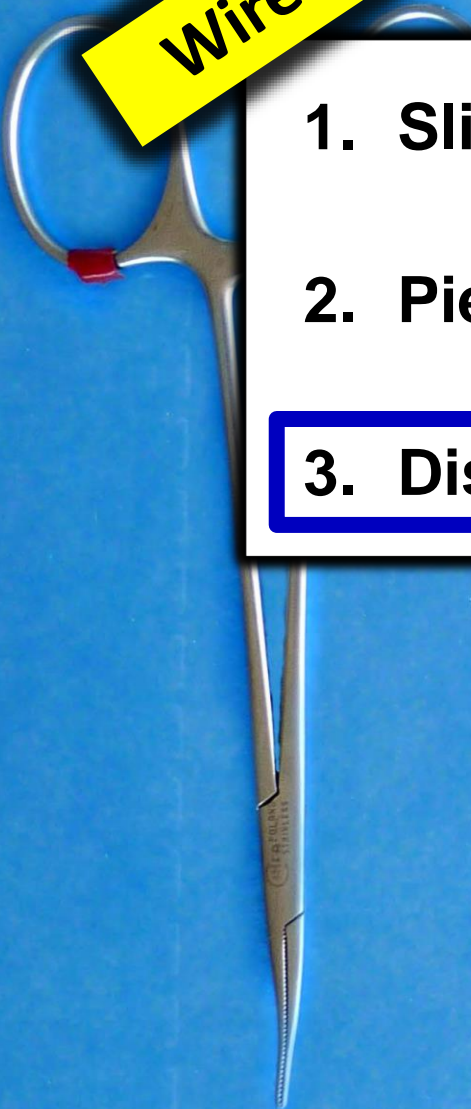


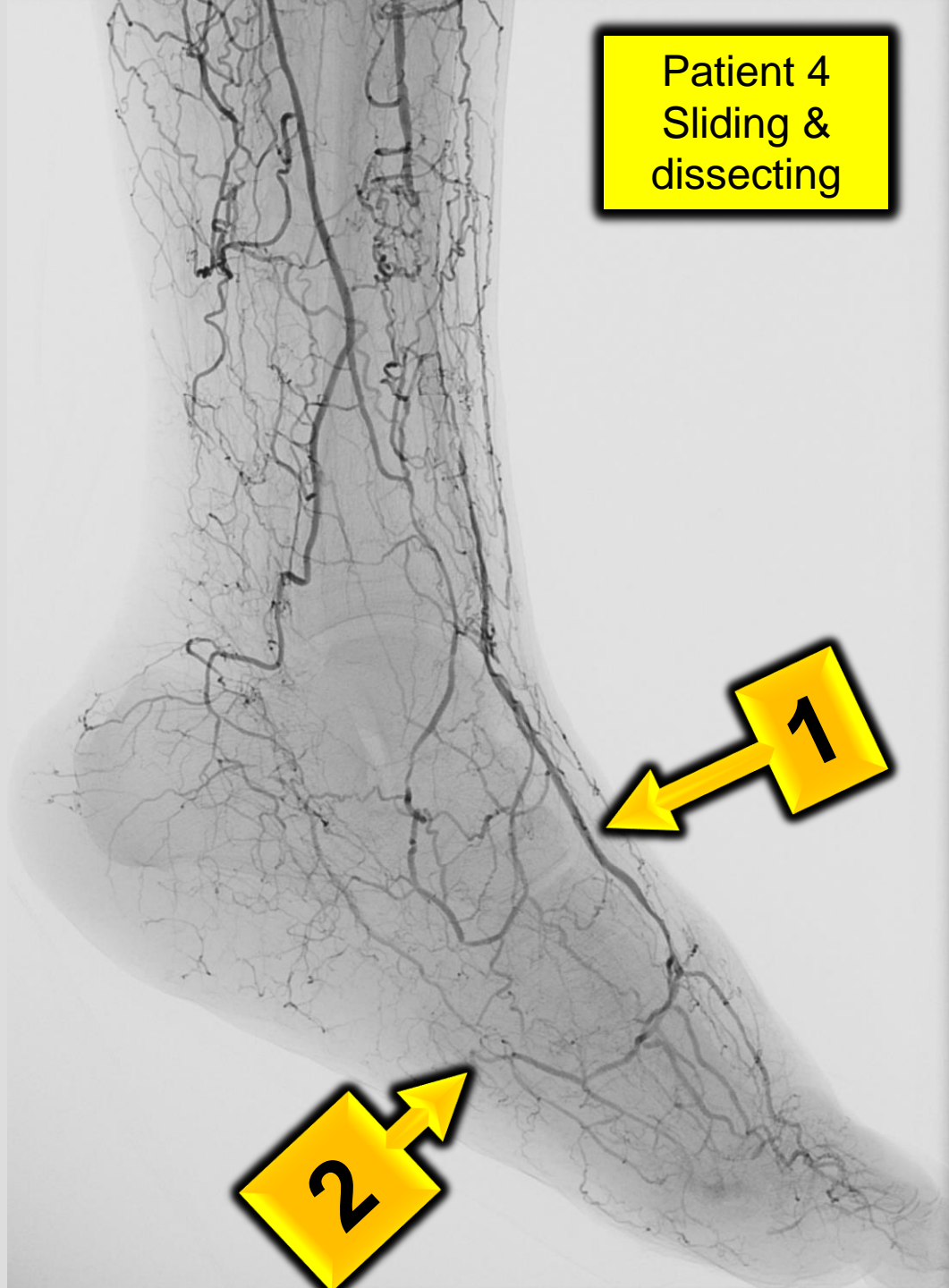




Wires

1. Sliding
2. Piercing
3. Dissecting





Patient 4
Sliding &
dissecting







- Berenstein 4F Tempo Aqua (Cordis)
- Terumo 0.035" half stiff

