

Fenestrated and Branched Thoracic Endografts for Complex Arch Pathology

Robert Ma, Ming Yui, Paul Haggart, Thodur Vasudevan

Conflicts of Interest

- Nil disclosures



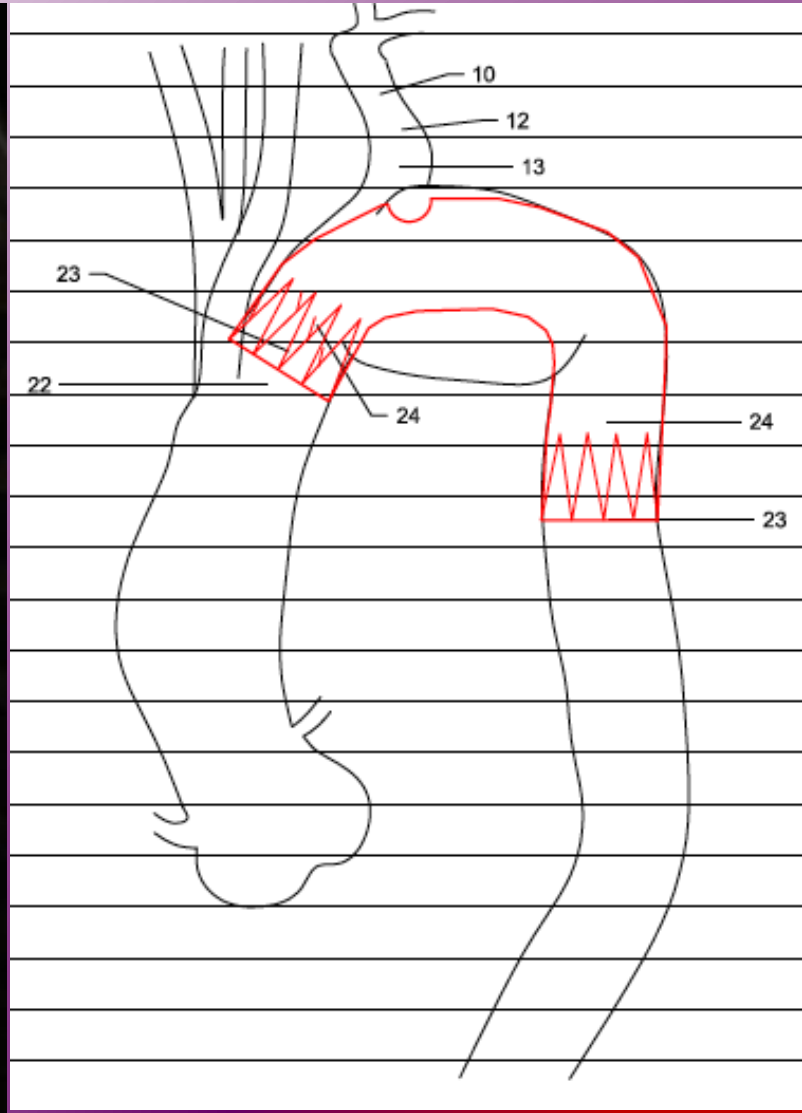
Demographics

- Retrospective review of prospectively collected data
- 7 patients in 2 institutions over 5 years
 - 2 Kommerell's Diverticula
 - 1 Chronic Dissection
 - 4 Aneurysms
- 6 males, 1 Female
- Age 37-73 (mean 58)

Intervention

- All Cook Custom-made Endografts; Five single vessel fenestrations for SCA
- Two cases with (L) SCA fenestration and (R) SCA branch
- Access
 - 3 percutaneous, 4 cutdowns
 - 22Fr devices (8.6mm outer diameter)
- Procedural Imaging
 - Mean 42min screening time (20-56)
 - Mean 1122229 xray dose (uGcm2) (606879-1650825)
- Contrast Dose
 - 264ml (130-400)

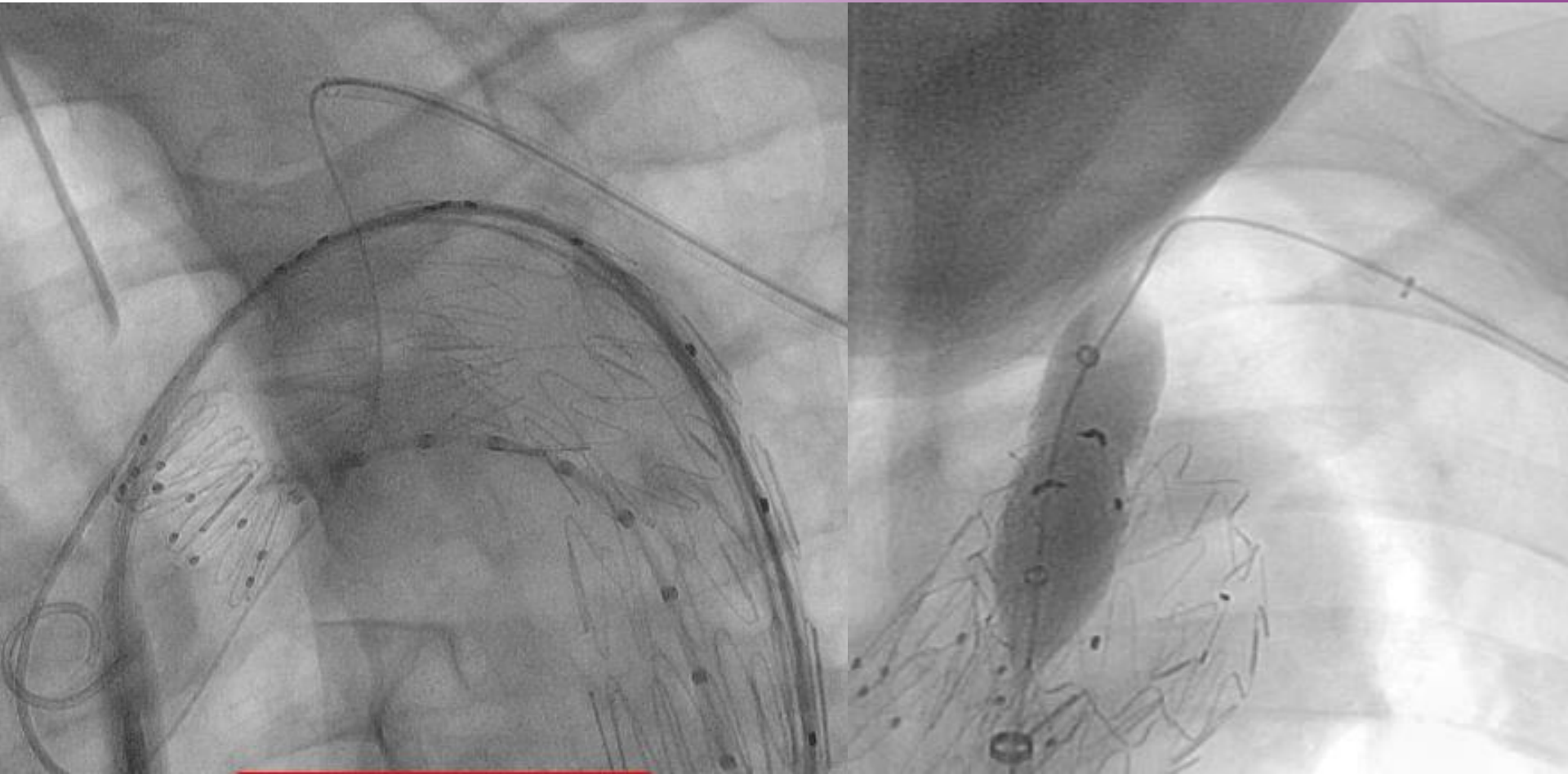
Single Fenestration



Single Fenestration



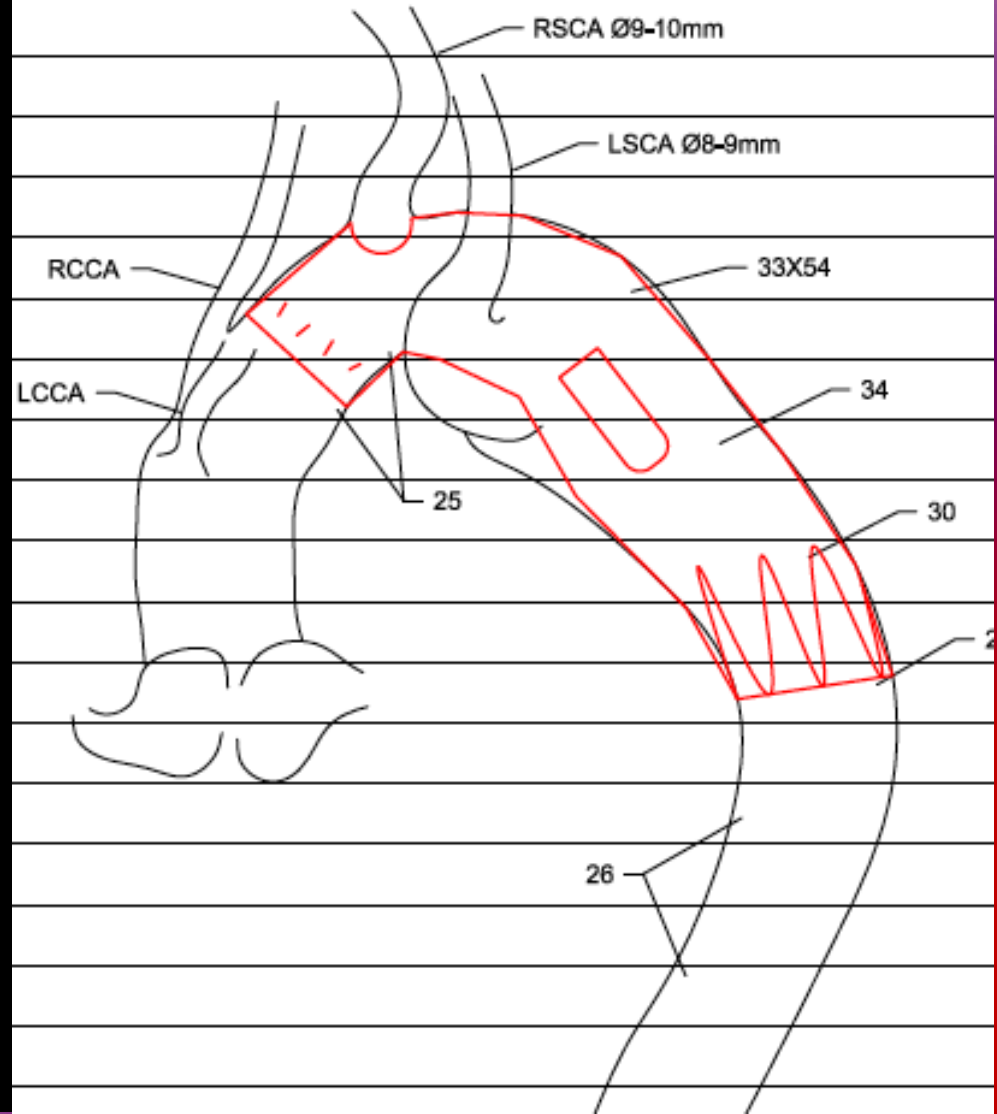
Single Fenestration



Left



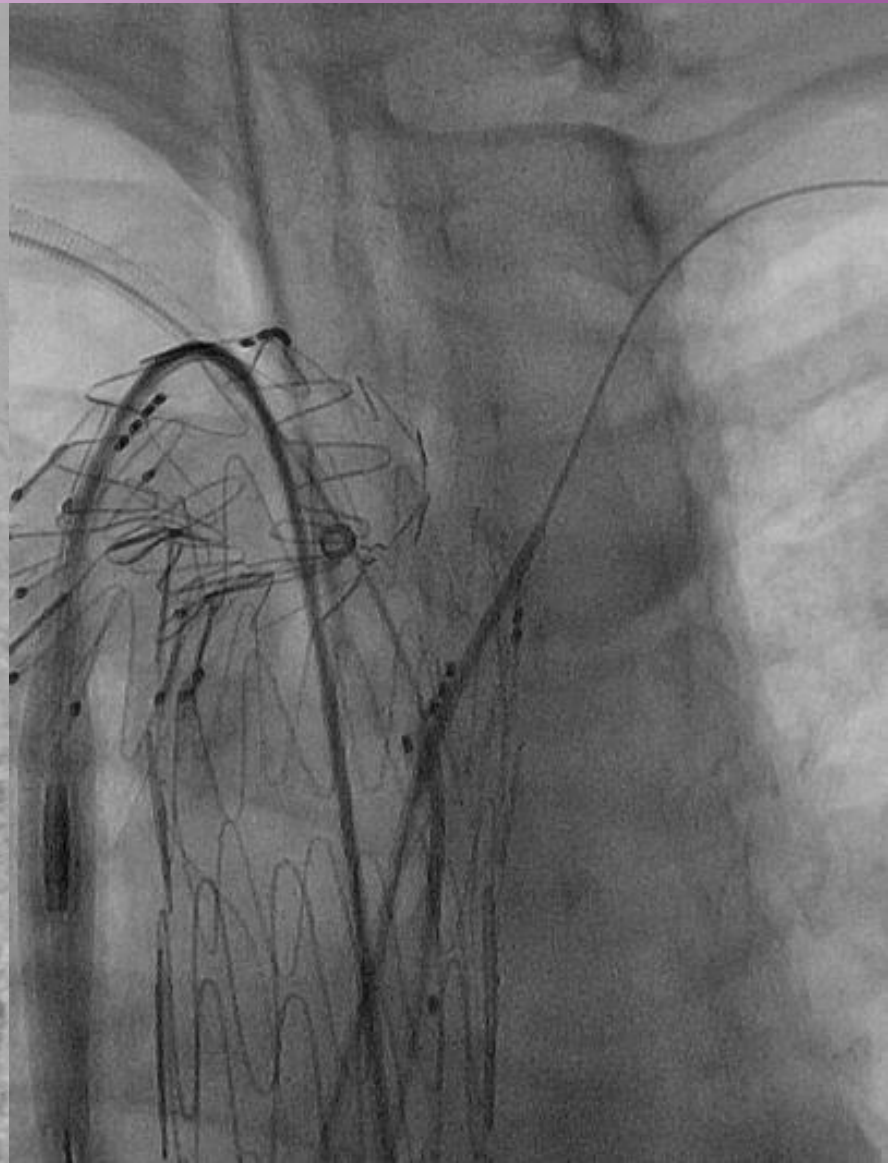
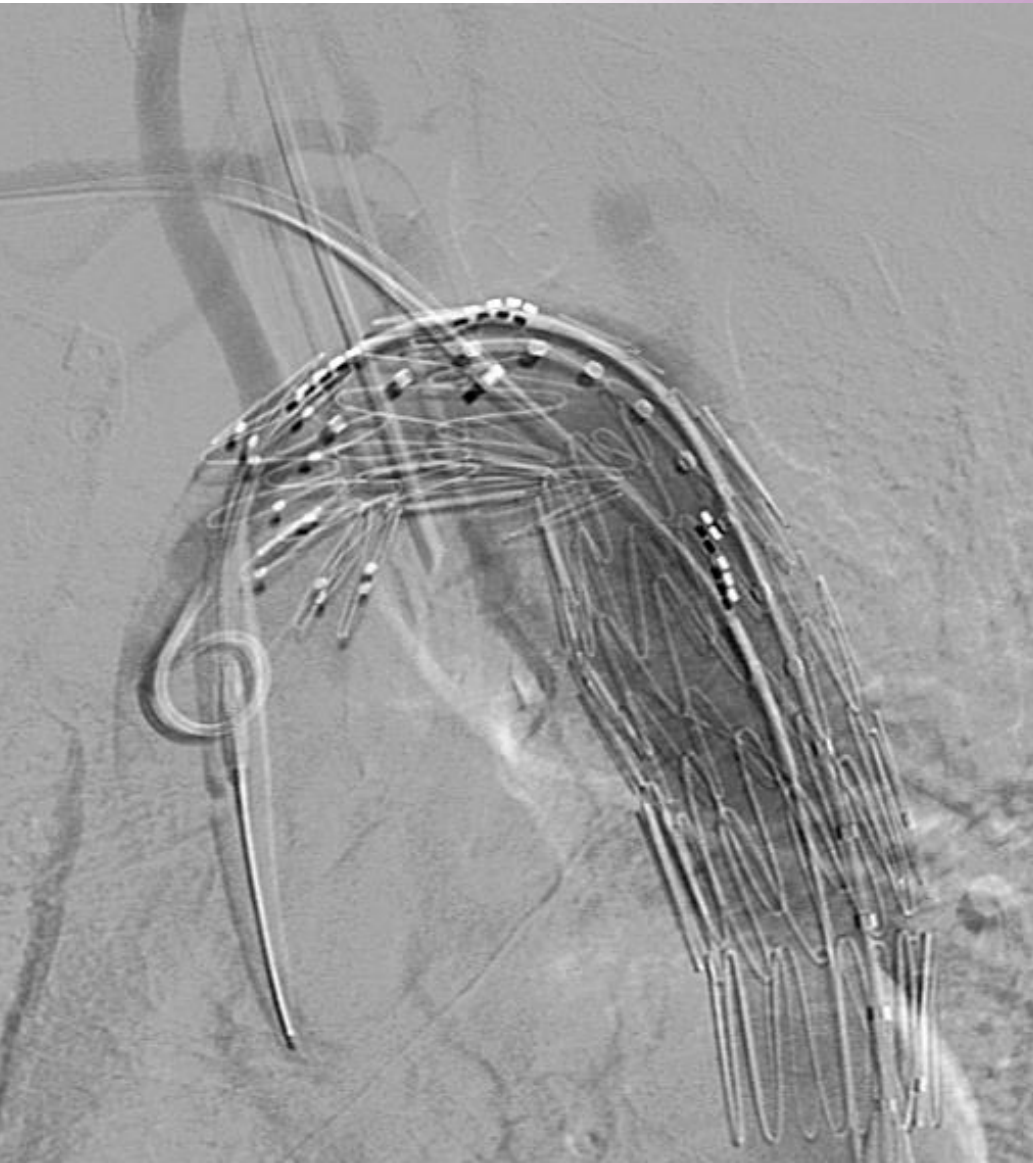
Fenestration & Branch



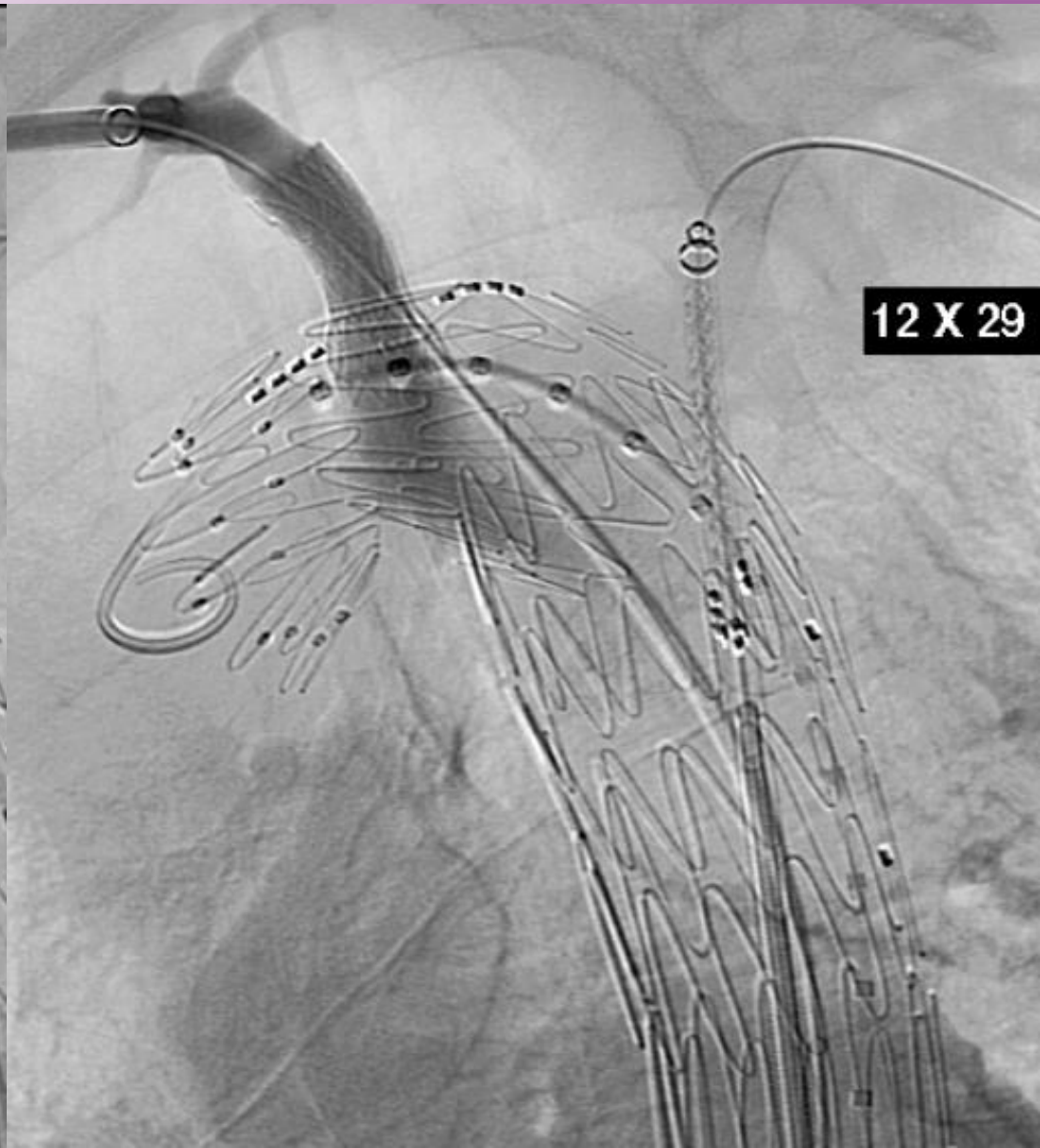
Fenestration & Branch



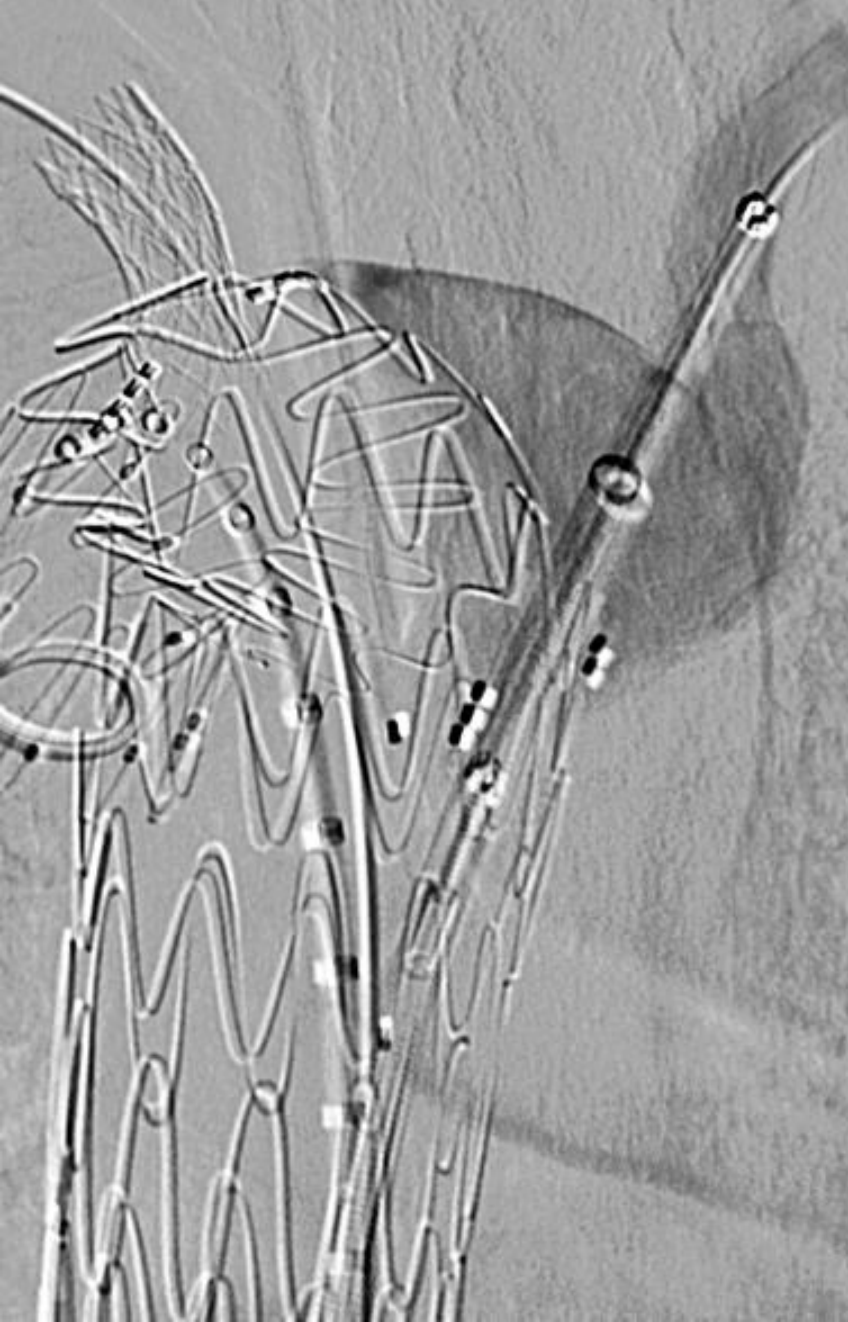
Fenestration & Branch



Fenestration & Branch



Fenestration & Branch



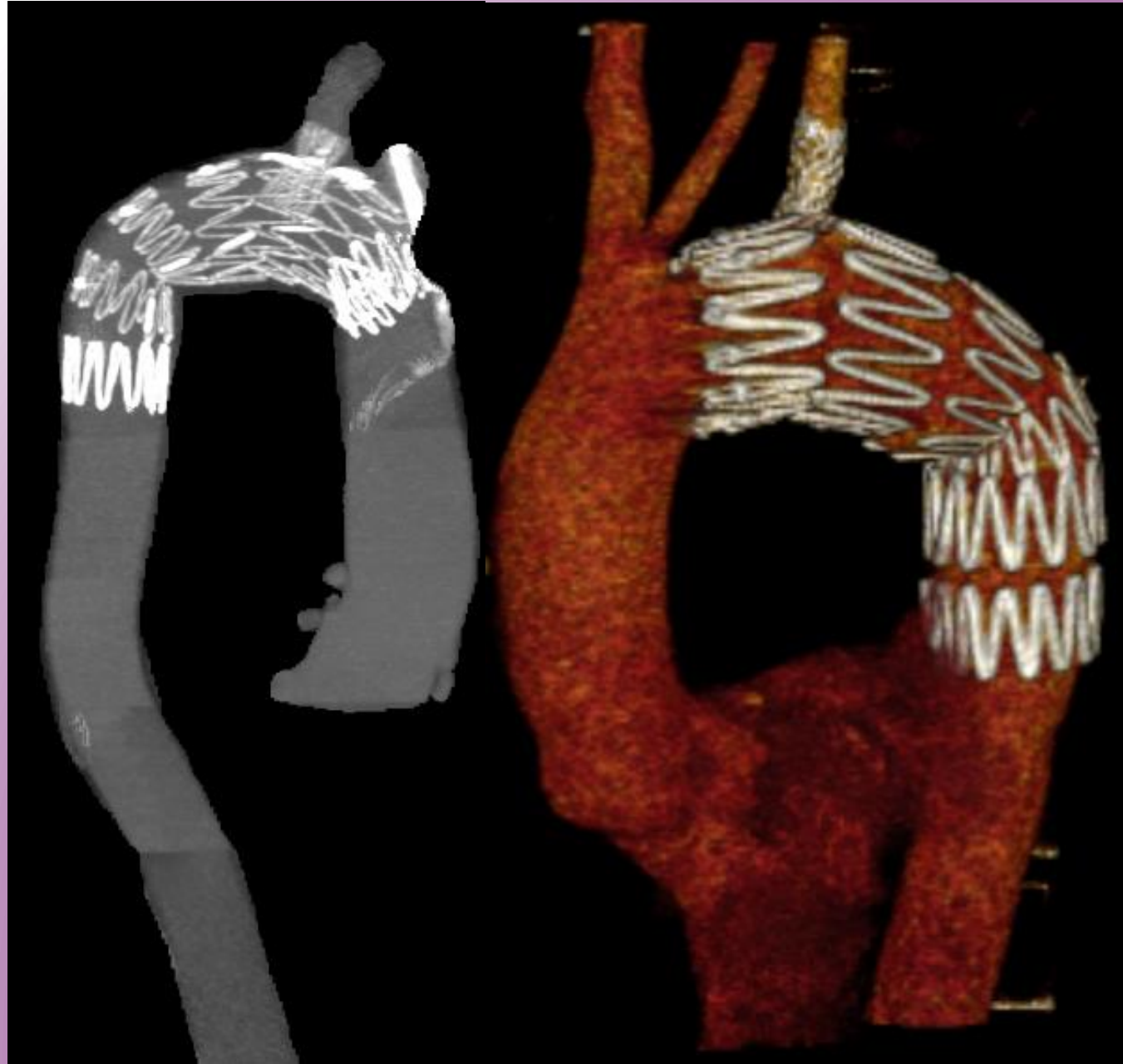
Post-Operative Outcomes

- LOS
 - Mean 4 days (2-8)
- 1 Early reintervention (access related)
- 1 minor stroke?- Normal CT and MRI
- 1 AKI (370ml volume contrast, open aortic exposure)
- No Mortality

Follow Up

- Mean follow up 27 months (3-60)
 - No mortality
- 2 reinterventions
 - Type 1/2 endoleak (Kommerell's)
 - 32x39 ANDRA *balloon expandable stent*
 - V12 stent to (L) SCA
 - Type 2 endoleak (Aneurysm)
 - 10x37 Begraft
- 1 small intercostal endoleak for ongoing surveillance

Follow Up



Follow Up



Follow Up



Follow Up



Thank You for Listening

- Questions?

